



# AirLink® MG90

Multi-Network, Dual Radio, 5G LTE Rugged Vehicle Router for Transit, Rail and First Responder Fleets

Performance Series Routers



## Benefits

- 5G connectivity delivers massive amounts of real-time data needed for mission-critical applications
- Proven solution: More than 25% of the top 50 transit agency vehicles and 75% of high-performance EMS systems depend on Sierra Wireless routers.
- Increases safety, transparency and compliance while maximizing system expandability and ROI
- Delivers advanced awareness of fleet operations with built-in vehicle I/O for remote monitoring of auxiliary devices such as light bars, sirens and gun racks

## MG90 Product Description

The best-in-class AirLink® MG90 is purpose built for transit, rail and first responders with dual-Cellular radios and dual Gigabit Wi-Fi delivering always-on connectivity with extensions to Land Mobile Radio (LMR) and satellite systems.

### MG90 5G

5G router (fallback to LTE Cat20). Capable of up to 2 Gbps downlink and 1 Gbps uplink speeds. Dual 2x2 or single 4x4 radios. Dual Wi-Fi radios.

### MG90 LTE-A PRO

Rugged Cat 12 LTE router capable of up to 600 Mbps downlink and 150 Mbps uplink speeds. FirstNet Ready. Dual or single radios. Dual Wi-Fi radios.

### MG90 LTE-A

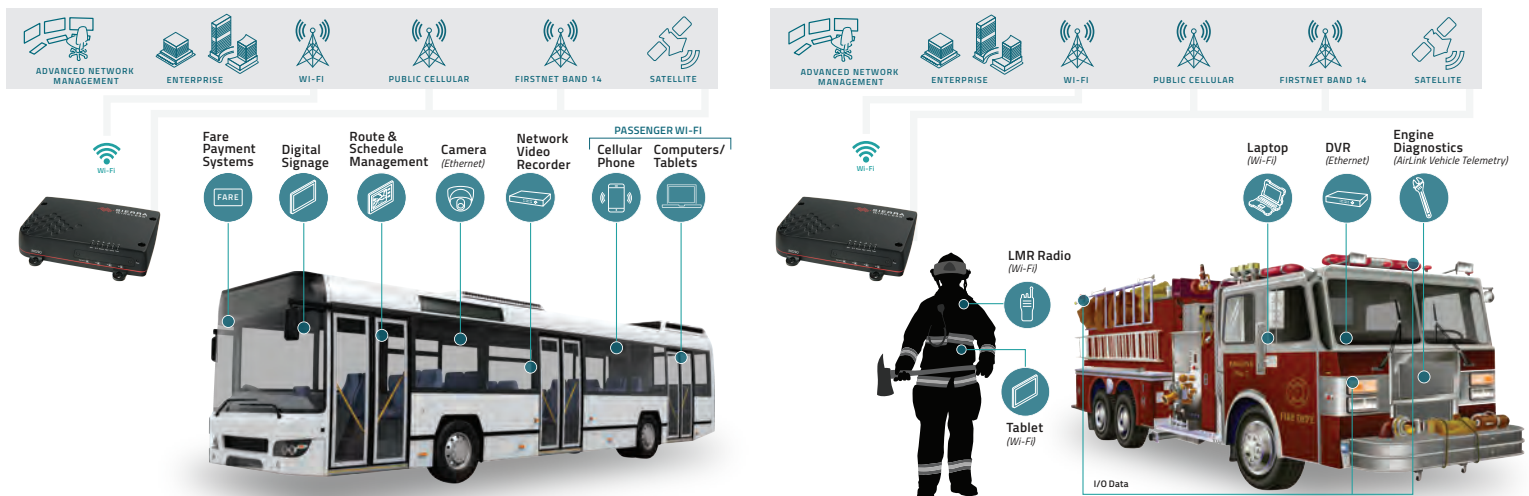
Rugged Cat 6 LTE router capable of 300 Mbps downlink and 50 Mbps uplink speeds. Dual or single LTE radios. Dual Wi-Fi radios.

## Ideal Applications

Mobile mission critical applications in public safety, transit and field services. Delivers secure always-on Vehicle Area Networks (VANS) for:

- Buses/Transit
- Ambulance/EMS
- Police
- Fire
- Utilities

## MG90 APPLICATION EXAMPLES



TRANSIT BUS

FIRE

## AIRLINK MG90 – PERFORMANCE SERIES ROUTER

Top Features	Device Variant	Specifications
LTE Supported	MG90 5G	5G (2/1 Gbps), Dual Cellular radios (Option)
	MG90 LTE-A Pro	Cat 12 LTE-A Pro (600/150 Mbps), Dual Cellular radios (Option)
	MG90 LTE	Cat 6 LTE (300/50 Mbps), Dual Cellular radios (Option)
Navigation	All	GNSS with inertial dead reckoning and support for vehicle telemetry.
Wi-Fi	All	Dual Radio, dual concurrent 3x3 MIMO 802.11 b/g/n/ac, 2.4/5 GHz (each radio), Support for 128 clients. WPA2 Enterprise. Captive Portal.
Host Interfaces	All	Gigabit Ethernet ports (5), USB 3.0 (2), RS-232. Configurable GPIO and digital inputs.
Security	All	All Sierra Wireless security features including IPsec protocol with IKEv1/IKEv2 encryption, Upto 10 concurrent tunnels per link. Integrated with ACM VPN Server, MOBIKE Protocol.
Construction	All	Aluminum die cast housing rated to IP-64 and MIL-STD 810G.
Industry Certifications	All	FirstNet Ready™ (SKU# 1103981/1103982) Safety: IECCE Certification Bodies Scheme (CB Scheme) and UL 60950 Vehicle Usage: E-Mark and SAE J1455 (Shock & Vibration) Rail Usage: EN50155 (Rolling Stock)
Dimensions	All	272 mm x 220 mm x 60 mm 10.71 in x 8.66 in x 2.36 in

### MG90 Services and Support

**Device Management:** AirLink Mobility Manager (AMM) delivers end-to-end network management that enables simplified, remote and real-time mass configuration, control and troubleshooting.

**VPN:** AirLink Connection Manager (ACM) is a mobile-optimized VPN solution that securely extends the enterprise network to the vehicle.

**AirLink Support:** Best-in-class support services covering MG90 devices, connected mobile assets and applications.

**Professional Services:** Full product life-cycle services including solution consulting and solution implementation services delivered by Sierra Wireless Network Engineers and Program Managers.

**AirLink Antennas:** Tested and certified to provide guaranteed performance with AirLink MG90 devices—designed to connect a wide range of mobile applications in public safety, transit and distributed enterprises.

#### About Sierra Wireless

Sierra Wireless (NASDAQ: SWIR) (TSX: SW) is the leading IoT solutions provider that combines devices, network and software to unlock value in the connected economy. Companies globally are adopting IoT to improve operational efficiency, create better customer experiences, improve their business models and create new revenue streams. Whether it's a solution to help a business securely connect edge devices to the cloud, or a software/API solution to help manage processes associated with billions of connected assets, or a platform to extract real-time data to make the best business decisions, Sierra Wireless will work with you to create the right industry-specific solution for your next IoT endeavor. Sierra Wireless has more than 1,300 employees globally and operates R&D centers in North America, Europe and Asia.

Connect with Sierra Wireless on the IoT Blog at [www.sierrawireless.com/iot-blog](http://www.sierrawireless.com/iot-blog), on Twitter at [@SierraWireless](https://twitter.com/SierraWireless), on LinkedIn at [www.linkedin.com/company/sierra-wireless](http://www.linkedin.com/company/sierra-wireless) and on YouTube at [www.youtube.com/SierraWireless](http://www.youtube.com/SierraWireless)