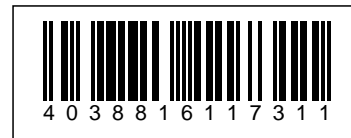


## ALLNET Switch full managed 24 Port Gigabit 370W / 24x PoE+ /

>>> [Vers l'article de la boutique en ligne](#)



### EAN CODE



## ALLNET Switch full managed 24 Port Gigabit 370W / 24x PoE+ / 4x SFP+ 10G / 19" / "ALL-SG8628PM-10G"

### Highlights:

- 24 port Gigabit Layer2+ switch architecture (ports 1~24).
- 4 ports SFP+ 10G slots for optional GBICs compatible (ports 25~28)
- Supports various PoE management functions, including PoE schedule, PoE PD alive, etc.
- Supports SFP DDM & cable diagnostics
- Supports G.8032 ERPS, self-detection time < 20 ms
- Supports 1588 V2.0, transparent clock
- Supports port aggregation
- 4KV surge protection, 6KV contact/8KV air ESD protection
- Max. 370W PoE budget
- 19" angle or wall/table mounting possible

ALL-SG8628PM-10G is a L2+ managed switch with 24 gigabit Ethernet ports and 4 1G/10G dual speed SFP ports. The 24 Ethernet ports supports IEEE802.3.af/at PoE output, can work with PoE PD devices like IP cameras, wireless AP, doorbell etc. With Rich L2+ management function, it is easy to set up to meet the projects technical requirements. It is an ideal solution for CCTV surveillance, wireless coverage and other SMB applications.

### Rich PoE Management function

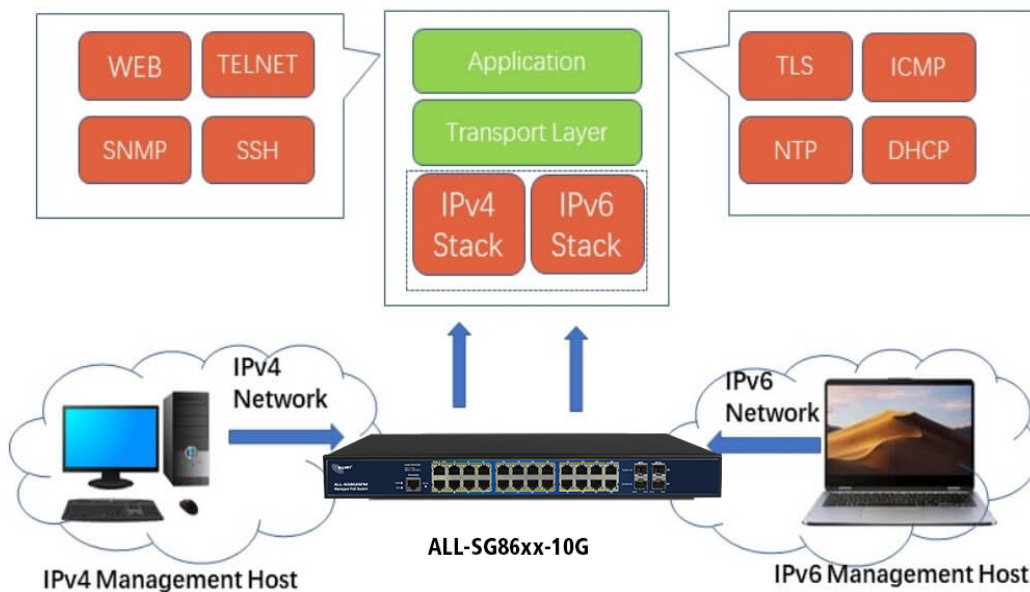
- PoE PD-alive check
- Scheduled power rebooting
- PoE schedule
- PoE usage monitoring
- Soft-reboot PoE Non-stop
- PoE port power feeding priority

### 10Gbps Uplink Capacity for Big Bandwidth Application

10G Ethernet is a big leap in the evolution of Ethernet. The 10G SFP+ slots supports dual-speed 10GBASE-SR/LR or 1000BASE-SX/LX, meaning the administrator now can flexibly choose the suitable SFP/SFP+ transceiver according to the transmission distance or the transmission speed required to extend the network efficiently. It is a cost-effective solution for SMB network to achieve the maximum performance of the 10G networks

### Solution for IPv6 Networking

With the IPv6/IPv4 dual stack and other management functions, the ALL-SG8628PM-10G is the best choice for IP CCTV surveillance, VoIP and wireless solution providers to develop the IPv6 network. Meanwhile they help the SMBs to upgrade their network infrastructures to the IPv6 era without any extra investment.



### Robust Layer 2 Features

The ALL-SG8628PM-10G can be programmed for advanced switch management functions, such as port aggregation, Q-in-Q VLAN, Spanning Tree Protocol, QoS, bandwidth control, ERPS, IGMP/MLD snooping etc. The ALL-SG8628PM-10G allows the operation of a high-speed trunk combining multiple ports.

### Powerful Security Functions

The ALL-SG8628PM-10G provides a comprehensive access control list (ACL) for enforcing security to the edge. It can be used to restrict to network access by denying packets based on source and destination IP address, TCP/UDP port number or defined typical network applications. Its protection mechanism also comprises 802.1x

Port-based and MAC-based user and device authentication. With the private VLAN function, communication between edge ports can be prevented to ensure user privacy.

### Enhanced Security and Traffic Control

The ALL-SG8628PM-10G supports DHCP Snooping, IP Source Guard and Dynamic ARP Inspection functions to prevent IP snooping from attack and discard ARP packets with invalid MAC address. The network administrator can now construct highly-secure corporate networks with considerably less time and effort than before.

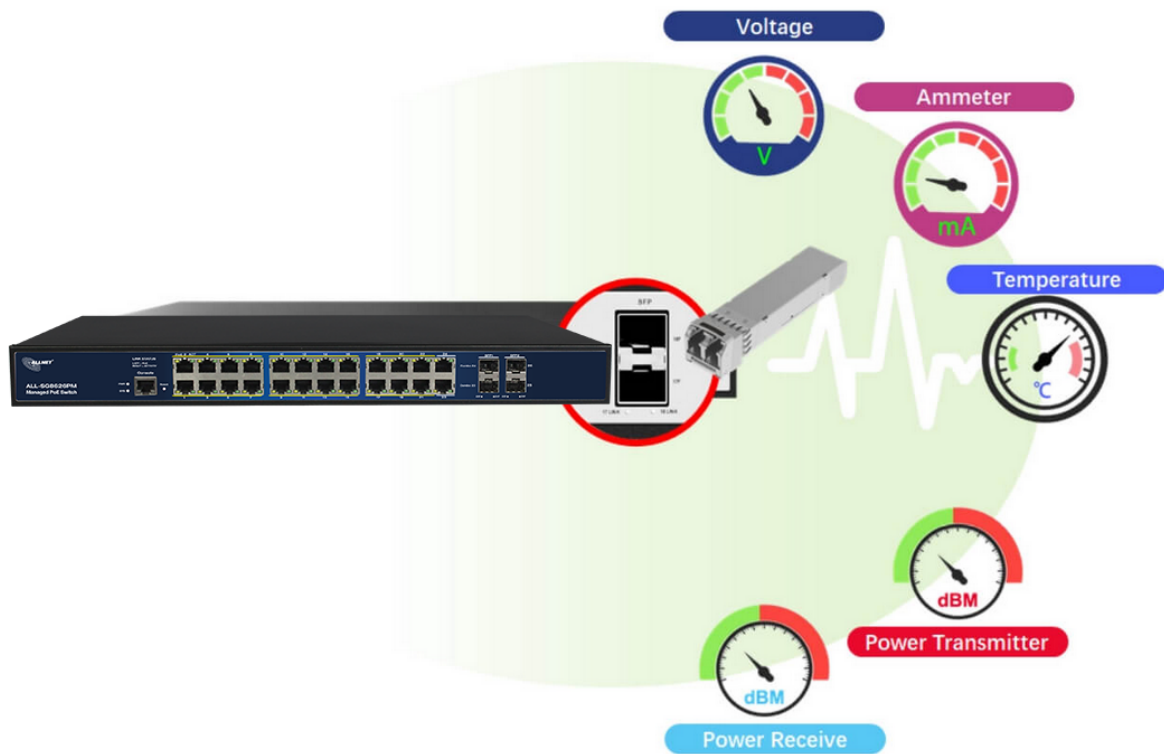
### User-friendly Secure Management

For efficient management, ALL-SG8628PM-10G managed switch series is equipped with console, web and SNMP management interfaces. With management interface, ALL-SG8628PM-10G offers an easy-to-use, platform independent management and configuration facility. The ALL-SG8628PM-10G supports SNMP and it can be managed via any management software based on the standard SNMP v1 or v2 Protocol. Meanwhile the ALL-SG8628PM-10G offers Cisco-like command via Telnet or console port and customer doesn't need to learn new command from these switches. Moreover, the ALL-SG8628PM-10G offers the remotely secure management by supporting SSH, SSL and SNMP v3 connection where the packet content can be encrypted at each session.

### Intelligent SFP DDM Function

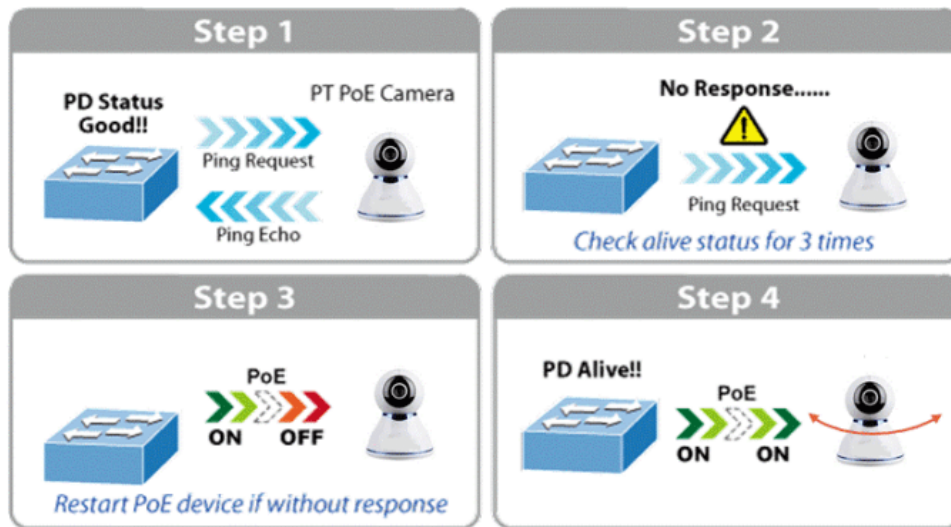
The ALL-SG8628PM-10G support SFP-DDM (Digital Diagnostic Monitor) function that greatly helps network administrator to easily monitor real-time parameters of the SFP and SFP+ transceivers, such as optical output power, optical input power, temperature, laser bias current, and transceiver supply voltage.

## Digital Diagnostic Monitor (DDM)



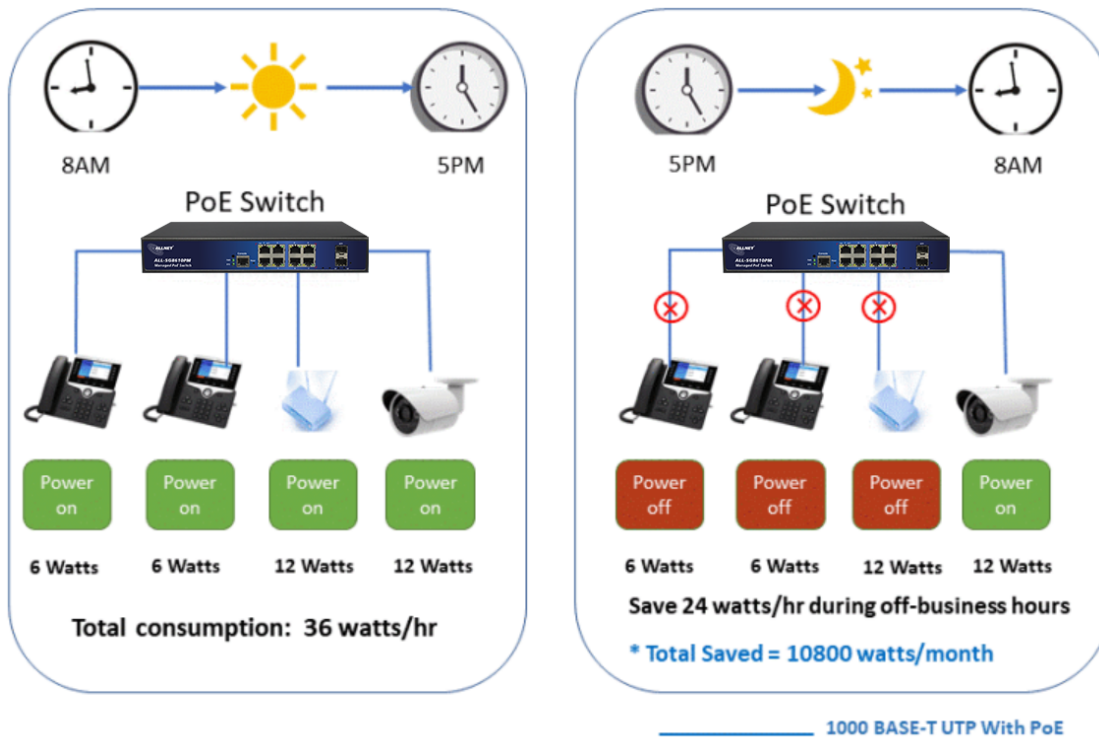
### Smart PoE PD-Alive Check

ALL-SG8628PM-10G managed PoE switch can be configured to monitor connected PD status in real time. Once the PD stops working and responding, ALL-SG8628PM-10G will resume the PoE port power and bring the PD back to work. They will greatly enhance the network reliability through the PoE port resetting the PD's power source and reducing administrator management burden.



### PoE Schedule Function for Energy Saving

For environmental protection purpose, the ALL-SG8628PM-10G switch Ethernet PoE can effectively control the power supply besides its capability of giving high watts power. The PoE schedule function helps to enable or disable PoE power feeding for each PoE port during specified time intervals and it is a powerful function to help SMBs or enterprises save power and money.

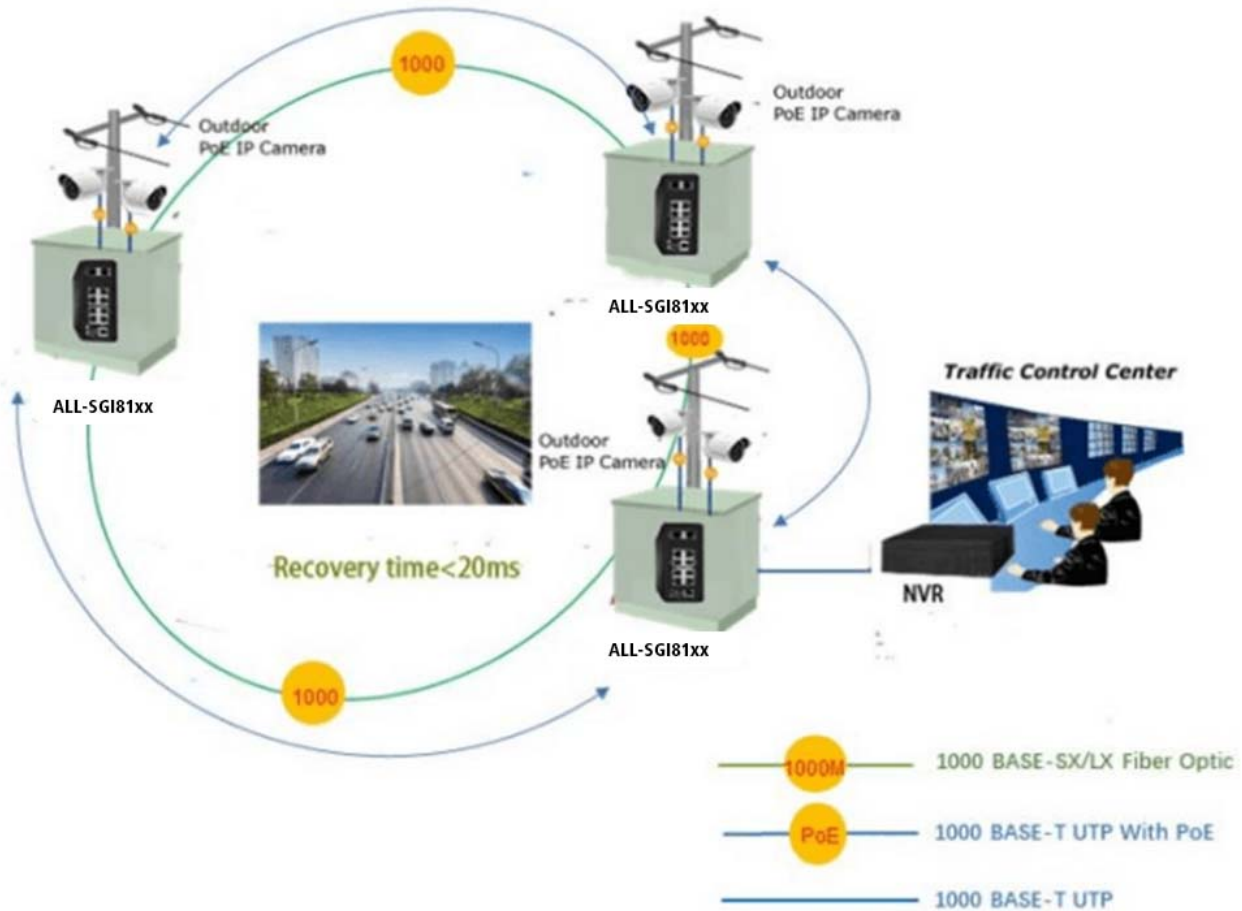


### Scheduled PD Re-starting

The ALL-SG8628PM-10G smart switch PoE allows each of the connected PoE IP cameras or PoE wireless access points to reboot at a specific time each week. Therefore, it will reduce the chance of IP camera or AP crash resulting from buffer overflow.

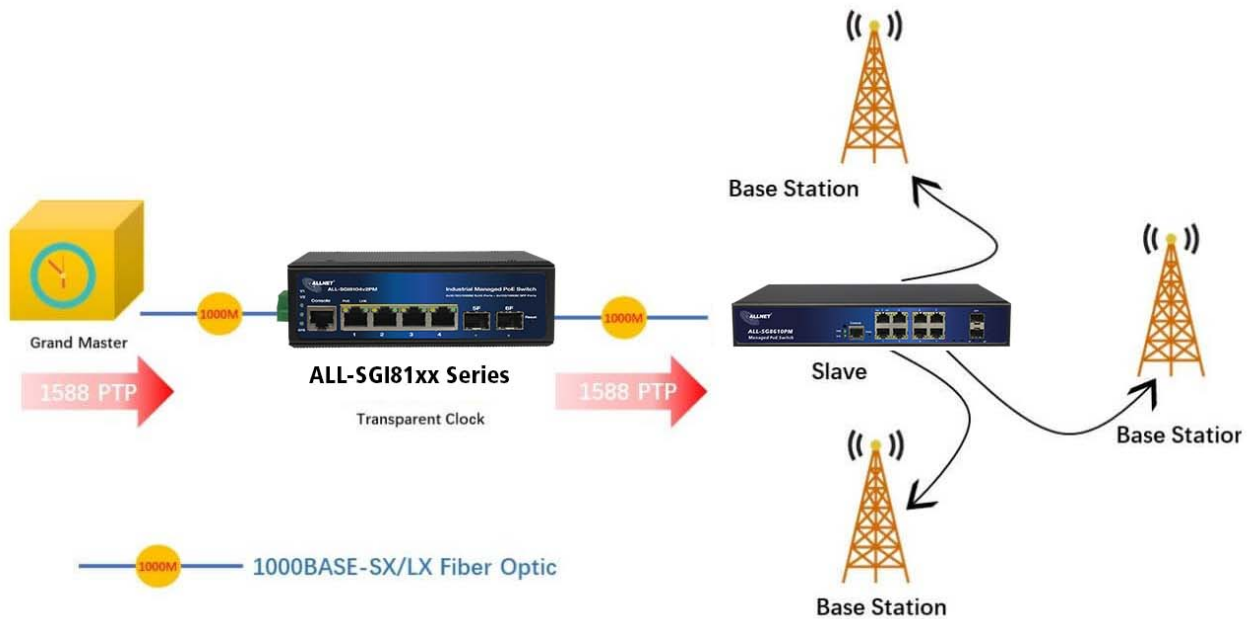


## ERPS Ring for Video Transmission Redundancy



### 1588 Time Protocol for Industrial Computing Networks

The ALL-SG8628PM-10G is ideal for telecom and Carrier Ethernet applications, supporting MEF service delivery and timing over packet solutions for IEEE 1588 and synchronous Ethernet.



**Technische Daten:**

Model	ALL-SG8626-10PM
Copper Ports	24-10/100/1000BASE-T RJ45 auto-MDI/MDI-X ports
Fiber Ports	4-10G SFP interfaces
PoE Ports	1~24-802.3af/802.3at PoE Injector Ports
Console Ports	1 x RS-232-to-RJ45 serial port (115200, 8, N, 1)
Switch Architecture	Store-and-Forward
Switch Fabric	128Gbps/non-blocking
Throughput	94.23Mpps @64 bytes
Address Table	32K entries
Share Data Buffer	32Mb
Jumbo Frame	9600 Bytes
SDRAM	2Gb
Flash Memory	128Mb
Flow Control	IEEE 802.3x pause frame for full-duplex Back pressure for half-duplex
Reset Button	>2 sec.: Factory default and reset
Power Supply	100~240V AC, 50/60Hz, 4A (max.)
Power Consumption	Max. 370 watts
PoE Standards	IEEE 802.3af Power over Ethernet/PSE



No. d'article: 208886  
 Numéro de fabricant: ALL-SG8628PM-10G

	IEEE 802.3at Power over Ethernet Plus/PSE
PoE Power Supply Type	Per Port 52V DC, 300mA. Max. 15.4 watts (IEEE 802.3af)  Per Port 52V DC, 600mA. Max. 30 watts (IEEE 802.3at)
LED Indicators	Power: Green Solid on- power work normal, off- power disconnected System: Green Blink-work normally, solid on- soft work abnormal, fast Blink - soft upgrade PoE: Yellow Solid on- PoE work normally, Off- PoE doesn't work, Blink - PoE overload 10/100/1000T RJ45 Interfaces (Port 1 to Port 48): 1000 LNK/ACT (Green) Blink - port connected with data transmission; Solid on- port connected without data transmission 1G/10G SFP Interfaces (Port 25 to Port 28): Blue Blink - port connected with data transmission; Solid on- port connected without data transmission
EMC	Surge Immunity:  4KV Per: IEC61000-4-5  ESD Protection:  ESD Level 4 Per: IEC61000-4-2  EFT Level 4 Per: IEC61000-4-4
<b>Layer2 Functions</b>	
Port configuration	Auto-negotiation  Flow Control  Port Mirror: TX/RX/BOTH; Many-to-1 monitor  CPU Mirror  Traffic statistics
Link Aggregation	Static link aggregation  LACP (Dynamic Trunk/Static Trunk)  Algorithm based on Source/Destination MAC





	Algorithm based on Source/Destination IP
MAC Table	Aging Time Static MAC address Dynamic MAC address management
VLAN	4094 Active VLANs 4094 VID 802.1Q Tag VLAN Port VLAN Protocol VLAN MAC VLAN Voice VLAN 802.1ad Q-in-Q tunneling Private VLAN (Protected port) GARP/GVRP
ACL	512ACLs L2, L3 e L4 Time-based ACL IP ACL MAC ACL MAC-IP ACL User-Defined ACL ICMPv6
Spanning tree	802.1D Spanning Tree Protocol (STP) 802.1w Rapid Spanning Tree Protocol (RSTP) 802.1s Multiple Spanning Tree Protocol (MSTP) Loop Guard Root Guard TC-BPDU Guard BPDU Guard BPDU Filter
Ring Protection	<20ms G.8032 ERPS Ring Fast Ring
Multicast	1024 groups IGMP v1/v2/v3 Snooping, Fast Leave MLD Snooping Multicast VLAN IGMP filter



	<p>MVR          Multicast Routing</p>
QOS	<p>8 mapping IDs to 8 level priority queues          CoS port-based          CoS 802.1p-based          CoS DSCP-based          Scheduling algorithms SP, WRR, SP+WRR          Storm Control (Broadcast, Multicast, Unknown Unicast)          Bandwidth control per port          SWRR, DWRR for Scheduling          Flow Redirect          Precedence          TOS          Rate Limiting(Ingress/Egress)          Stri Priority</p>
Security Features	<p>Port Security          MAC address filter          ARP Association (Manual, ARP scanning, DHCP snooping)          ARP Protection          AAA          DAI          DoS (Denial of Service)          Classification of packages based on: End.MAC, IP End, TCP / UDP Ports, Protocol Type;          802.1x Authentication (port-based e MAC-based)          TACACS/TACACS+ Authentication          RADIUS Authentication          DHCP Filter          Guest VLAN          SSLv2/SSLv3/TLSv1          SSHv1/SSHv2          Restriction of WEB access based on: IP Address, And. MAC and Port;          Port Isolation          Loopback detection</p>
Management	<p>SNMP v1/v2c/v3 with Full Private MIBs          RMON 4 groups          WEB (HTTP/HTTPS)          CLI (Telnet, Console, SSHv1/v2)          Firmware upgrade via console/web/TFTP          Configuration Backup/Reload          Dual Firmware          LLDP          Configuration Export/Import          CDP Aware          OAM (IEEE802.3ah)</p>



No. d'article: 208886  
 Numéro de fabricant: ALL-SG8628PM-10G

	CFM (IEEE802.1ag) sFlow Telnet
Synchronization, IEEE1588	Support IEEE1588v2 transparent clock
Other Features	DNS Client DHCP Relay DHCP Client DHCP Snooping DHCP Option 66 DHCP Option 67 DHCP Option 82 NTP/SNTP Client UPNP UDLD
PoE management	Total PoE power budget control Per port PoE function enable/disable PoE admin-mode control PoE port power feeding priority Per PoE port power limitation PD classification detection PD alive check PoE schedule Soft-reboot PoE Non-stop
Maintenance	Cable Diagnostics Ping SFP DDM (Digital Diagnostics Monitoring) Thermal protection System log (Local and Remote) Memory and CPU Monitoring Tracert/ tracer 6
<b>Layer 3 functions</b>	
Static Routing	IPv4 Unicast: Static Routing(Software Base)  IPv6 Unicast: Static Routing(Software Base)
IPV6	IPv6 neighbor discovery (ND) Path maximum transmission unit (MTU) discovery Internet Control Message Protocol (ICMP) version 6 TCPv6/UDPv6 Ping6 Telnet(v6) Http/Https Interface IPV6 ACL IPV6
Dimension	440x290x44.5 mm
Weight	4.5 kg



No. d'article: 208886  
Numéro de fabricant: ALL-SG8628PM-10G

Working Temperature	-10 °C to 45 °C
Storage Temperature	-20 °C to 70 °C
MTBF	50,000hrs

## Attributs

Attribut	Valeur
Anzahl Ports PoE/LAN:	24/0
Belüftung Switch:	Mit Lüfter
Einsatzort Switch:	19"
LAN Geschwindigkeit:	1Gbit/s
Management:	full managed
PoE Budget:	<500 Watt
PoE Port Leistung:	30W at
SFP Geschwindigkeit:	SFP+ 10Gbit;
Poids:	4.3 Kg
Garantie:	24.00 Mois

## Accessoires

No. d'article	Désignation
146245	ALLNET Switch Zubehör smart managed 24 Port Gigabit PoE AT Ersatzlüfter ALL-SG8428PM
27947	ALL4750 Module MiniGBIC MULTIMODE
59426	ALL4751 Module MiniGBIC SINGLEMODE
114334	ALLNET Switch Modul ALL4752 SFP(mini Gbic), 1000Mbit, LHX/LC
59391	ALL4753 Module MiniGBIC SINGLEMODE
59393	ALL4755 Module miniGBIC SINGLEMODE
143548	ALLNET Switch Module ALL4756 SFP(Mini-GBIC), 1000Mbit, ZX/LC
141113	ALLNET ALL4780 / Switch Modul (Mini-GBIC), 2Wire-Set, max. 1
75932	Patchkabel RJ45 FTP(F/UTP) 0,25m grau, CAT5e, Synergy 21,
75939	Patchkabel RJ45 FTP(F/UTP) 0,5m grau, CAT5e, Synergy 21,
75946	Patchkabel RJ45 FTP(F/UTP) 1,0m grau, CAT5e, Synergy 21,

No. d'article	Désignation
75959	Patchkabel RJ45 FTP(F/UTP) 2m grau, CAT5e, Synergy 21,
75966	Patchkabel RJ45 FTP 3m grau,CAT5e, Synergy 21,
75973	Patchkabel RJ45 FTP(F/UTP) 5m grau, CAT5e, Synergy 21,
75979	Patchkabel RJ45 FTP(F/UTP) 7,5m grau, CAT5e, Synergy 21,
75986	Patchkabel RJ45 FTP(F/UTP) 10m grau, CAT5e, Synergy 21,
76091	Patchkabel RJ45, 15m grau, CAT5e, S-FTP(SF/UTP), Synergy 21,
76029	Patchkabel RJ45, 0,25m grau, CAT5e, S-FTP(SF/UTP), Synergy 21,
76036	Patchkabel RJ45, 0,5m grau, CAT5e, S-FTP(SF/UTP), Synergy 21,
76043	Patchkabel RJ45, 1,0m grau, CAT5e, S-FTP(SF/UTP), Synergy 21,
76056	Patchkabel RJ45, 2m grau, CAT5e, S-FTP(SF/UTP), Synergy 21,
76063	Patchkabel RJ45, 3m grau, CAT5e, S-FTP(SF/UTP), Synergy 21,
76070	Patchkabel RJ45, 5m grau, CAT5e, S-FTP(SF/UTP), Synergy 21,
76077	Patchkabel RJ45, 7,5m grau, CAT5e, S-FTP(SF/UTP), Synergy 21,
76084	Patchkabel RJ45, 10m grau, CAT5e, S-FTP(SF/UTP), Synergy 21,
76091	Patchkabel RJ45, 15m grau, CAT5e, S-FTP(SF/UTP), Synergy 21,
76117	RJ45, CAT6 250Mhz, 0,25m gris, S-STP(S/FTP)
76124	Cordon RJ45, CAT6 250Mhz, 1,0m gris, S-STP
76133	Cordon RJ45, CAT6 250Mhz, 1,0m gris, S-STP
76151	Cordon RJ45, CAT6 250Mhz, 2m gris, S-STP
76160	Cordon RJ45, CAT6 250Mhz, 3m gris, S-STP
76169	Cordon RJ45, CAT6 250Mhz, 5m gris, S-STP
76178	Cordon RJ45, CAT6 250Mhz, 7,5m gris, S-STP (S/FTP)
76187	Cordon RJ45, CAT6 250Mhz,10m gris, S-STP (S/FTP)
76196	Cordon RJ45, CAT6 250Mhz,15m gris, S-STP (S/FTP)
140955	TP(RJ45) POE-Tester, at/af, Endspan/Midspan, standard, Synergy 21,
141255	Netzkabel 230V Schutzkontakt CEE7(Stecker)->Kaltgeräte IEC-C13(Buchse), 1m,Black IEC Lock
141254	Netzkabel 230V Schutzkontakt CEE7(Stecker)->Kaltgeräte IEC-C13(Buchse), 2m,Black IEC Lock
141256	Netzkabel 230V Schutzkontakt CEE7(Stecker)->Kaltgeräte IEC-C13(Buchse), 3m,Black IEC Lock
188424	CyberPower USV, OR-Serie, 600VA/360W, Line-Interactive, LCD, 19"/1HE, USB/RS232, IEC C13 Kaltgeräte,

<b>No. d'article</b>	<b>Désignation</b>
188433	CyberPower USV, OR-Serie, 650VA/360W, Line-Interactive, LCD, 19"/1HE, USB/RS232, CEE7-Schutzkontakt,
188435	CyberPower USV, OR-Serie, 1000VA/600W, Line-Interactive, LCD, 19"/1HE, USB/RS232, IEC C13 Kaltgeräte
188439	CyberPower USV, OR-Serie, 1500VA/900W, Line-Interactive, LCD, 19"/1HE, USB/RS232, IEC C13 Kaltgeräte
146282	ALLNET Switch Module ALL4767 SFP+(Mini-GBIC), 10Gbit
101189	ALLNET ALL4757 / Switch module SFP+ (mini Gbic), 10Gbit, SR/
149613	ALLNET Switch Module ALL4757-INDU SFP+(Mini-GBIC), 10Gbit
101190	ALLNET Switch module ALL4758 SFP+ (Mini-GBIC), 10Gbit Single
149616	ALLNET Switch Module ALL4758-INDU SFP+(Mini-GBIC), 10Gbit
208360	ALLNET Switch Modul ALL4767-INDU SFP+(Mini-GBIC), 10Gbit, RJ45(TP), uncodiert, Industrial -40/+85 Grad,
139776	ALLNET Switch Module ALL4763 SFP+(Mini-GBIC), 10Gbit
139777	ALLNET Switch Module ALL4764 SFP+(Mini-GBIC), 10Gbit
191685	ALLNET Switch Modul ALL4768 SFP+(Mini-GBIC), 10Gbit Singlemode, ER/LC, bis 40Km
191686	ALLNET Switch Modul ALL4769 SFP+(Mini-GBIC), 10Gbit Singlemode, ZR/LC, bis 80Km

**[Cliquez ici pour découvrir d'autres articles de cette catégorie dans notre boutique.](#)**