

ALLNET Switch full managed Layer2+ 10 Port • 8x GbE • PoE Budget 130W • 8x PoE at • 2x SFP • 19" • Fanless • ALL-SG8610PM

>>> [Vers l'article de la boutique en ligne](#)



EAN CODE



ALLNET Switch full managed Layer2+ 10 Port • 8x GbE • PoE Budget 130W • 8x PoE at • 2x SFP • 19" • Fanless • ALL- SG8610PM

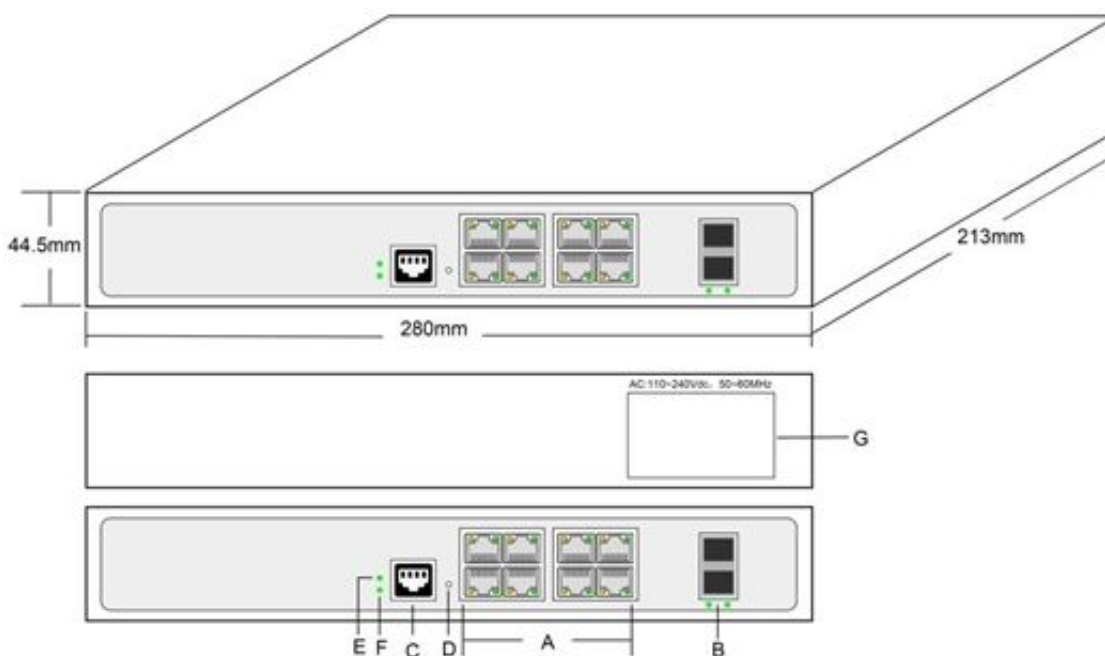
Highlights:

- 8-port 10/100/1000Mbps with full PoE support
- 2x SFP slots for optional MiniGBICS
- PoE power 4x a' 30 Watt (IEEE802.3at or 8x IEEE802.3af)
- FANLESS DESIGN with internal power supply unit
- Supports L2+ switching features such as 802.1Q VLAN, mirroring, port isolation, IGMP snooping, DHCP snooping, LLDP, POE+ management, IP source guard, ARP inspection, ACLs etc.
- Support of Spanning Tree STP(802.1D) and RSTP(802.1W) and MSTP(802.1s).
- Support advanced management via WEB, CLI, TELNET, SSH, SNMP.
- Support cable diagnosis and SFP DDM.
- Support PoE management, such as PoE schedule, PoE PD alive.
- Supports G.8032 quick ring protocol. Self recovery time <20ms.
- Support DDM, SFP digital diagnostic monitoring
- Support IPV4 and IPV6 static routing functions.
- Support memory and CPU monitoring
- 4KV surge protection, 6KV contact/8KV air protection
- PoE budget 130W

Product Description:

The ALL-SG8610PM is a managed Layer 2+ Gigabit PoE switch that has intelligent PoE features to improve the availability of critical business applications. It offers IPv6/IPv4 management and an integrated L2+ Gigabit switching engine along with 8*10/100/1000BASE-T ports with 30 watts of 802.3at PoE+ and 2 Gigabit SFP slots. With a total power budget of up to 130W for various types of PoE applications, it provides fast, secure and cost-effective Power-over-Ethernet network solutions for IP surveillance in small businesses and enterprises.

The ALL-SG8610PM is programmed for advanced switch management features such as 802.1Q VLAN and Q-in-Q VLAN, Multiple Spanning Tree Protocol (MSTP), Loop and BPDU Guard, IGMP Snooping and MLD Snooping. In addition, Link Layer Discovery Protocol (LLDP) is included as a Layer 2 protocol to discover basic information about neighboring devices in the local broadcast domain.



- | | |
|--------------------------------------|--------------------------------|
| A: 8x 10/100/1000Mbps PoE RJ45 Ports | B: 2x Gigabit SFP Uplink Ports |
| C: Console Port | D: Reset Key |
| E: Power LED Indicator | F: System Status LED Indicator |
| G: AC Power Input: 100~240V, 50~60Hz | |

Rich PoE Management Function

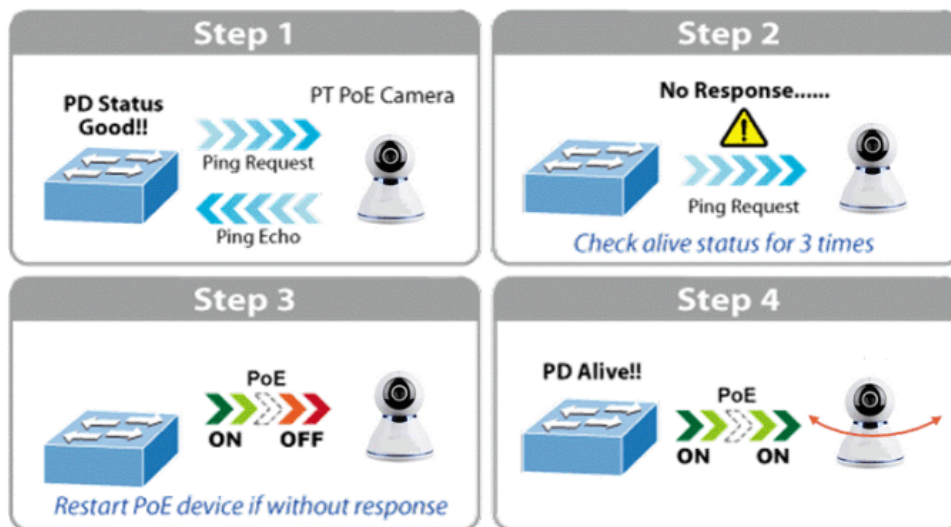
Being the managed PoE switches for CCTV surveillance, wireless and VoIP networks, ALL-SG8610PM features the following special PoE management functions:

- PoE PD-alive check
- Scheduled power rebooting
- PoE schedule
- PoE usage monitoring
- Soft-reboot PoE Non-stop

- PoE port power feeding priority

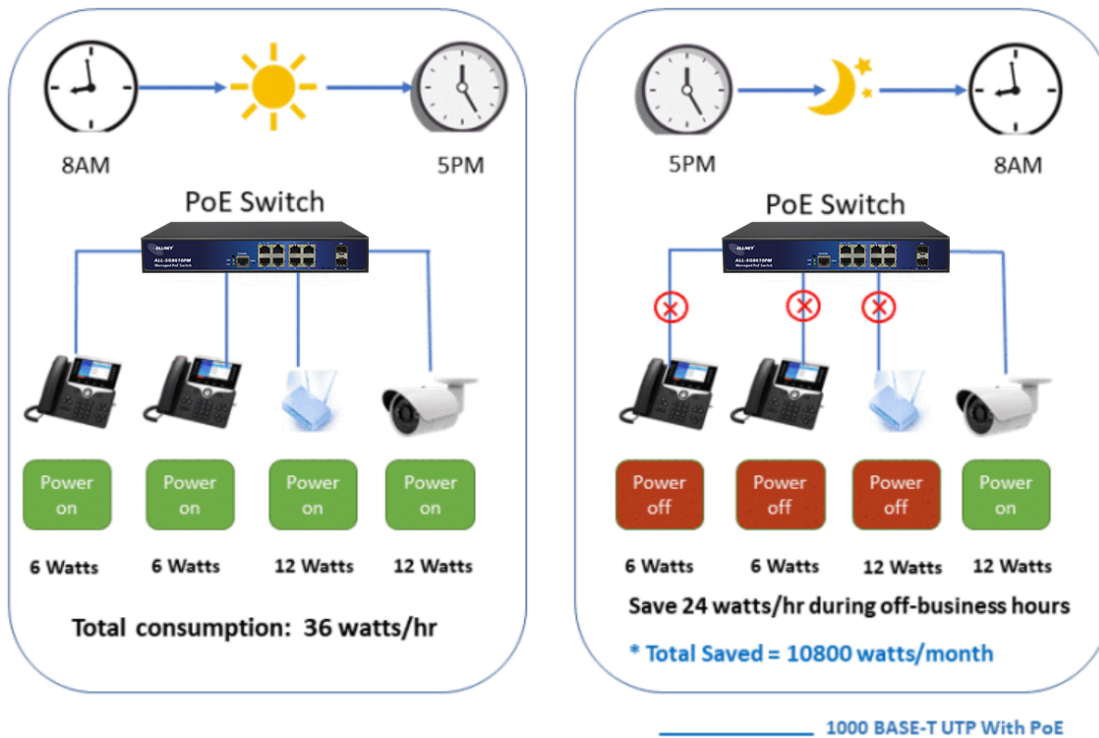
Smart PoE PD-Alive Check

ALL-SG8610PM managed PoE switch can be configured to monitor connected PD status in real time. Once the PD stops working and responding, ALL-SG8610PM will resume the PoE port power and bring the PD back to work. They will greatly enhance the network reliability through the PoE port resetting the PD's power source and reducing administrator management burden.



PoE Schedule Function for Energy Saving

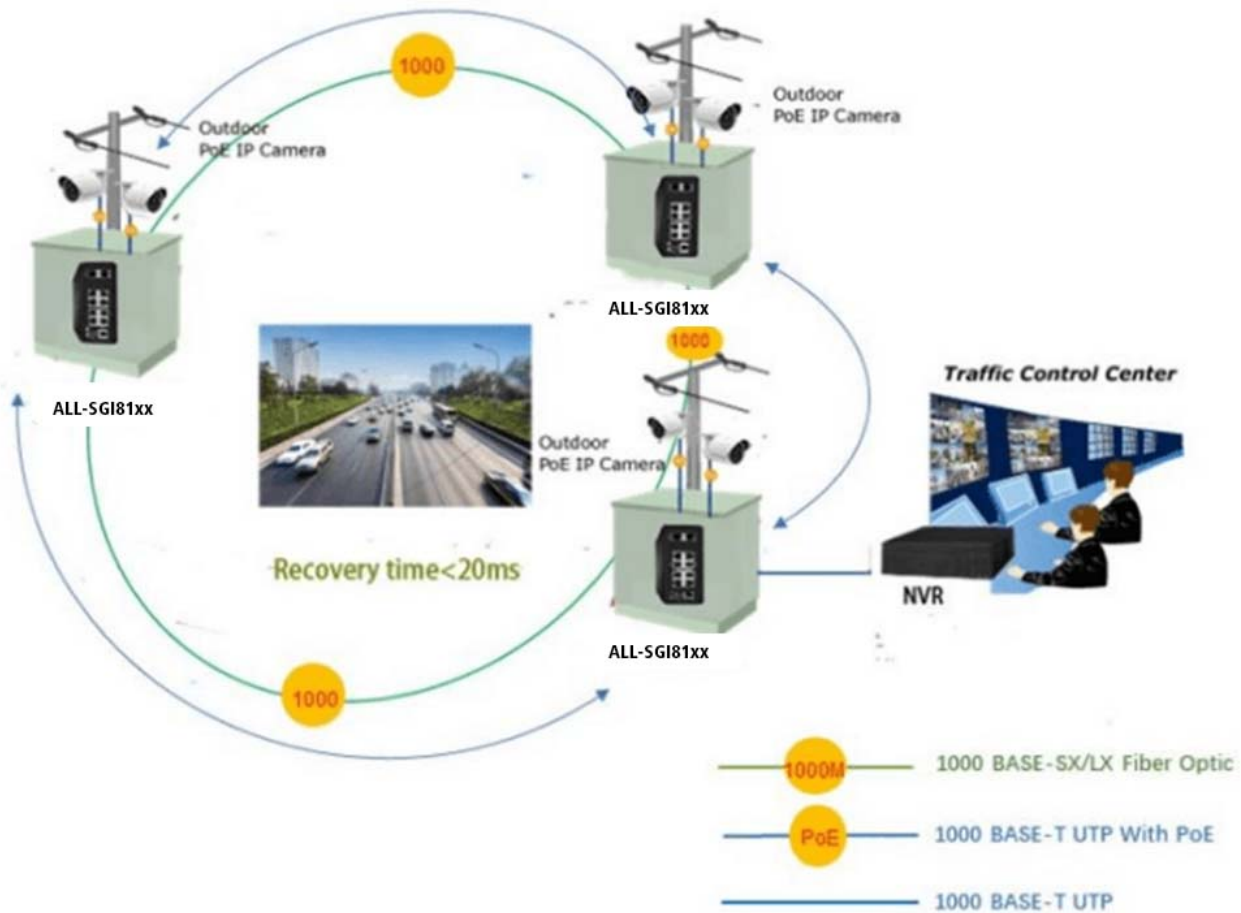
For environmental protection purpose, the ALL-SG8610PM switch Ethernet PoE can effectively control the power supply besides its capability of giving high watts power. The PoE schedule function helps to enable or disable PoE power feeding for each PoE port during specified time intervals and it is a powerful function to help SMBs or enterprises save power and money.



Scheduled PD Re-starting

The ALL-SG8610PM smart switch PoE allows each of the connected PoE IP cameras or PoE wireless access points to reboot at a specific time each week. Therefore, it will reduce the chance of IP camera or AP crash resulting from buffer overflow.

ERPS Ring for Video Transmission Redundancy



Strong Layer 2 Features

The ALL-SG8610PM layer 2 Ethernet switch can be programmed for advanced Layer 2 switch management functions such as dynamic port link aggregation, 802.1Q tagged VLAN, Q-in-Q VLAN, private VLAN, Multiple Spanning Tree Protocol (MSTP), QoS, bandwidth control, IGMP snooping and MLD snooping. Via the aggregation of supporting ports, the ALL-SG8610PM allows the operation of a high-speed trunk group that comes with multiple ports and supports fail-over as well.

Efficient and Various Management Methods

For efficient management, the ALL-SG8610PM is equipped with console, Web and SNMP management interfaces.

With the built-in Web-based management interface, it offers an easy-to-use, platform-independent management and configuration facility.

For text-based management, it can be accessed via Telnet and the console port.



For standard-based monitor and management software, it offers SNMPv3 connection which encrypts the packet content at each session for secure remote management.

Intelligent PoE Switch SFP DDM Function

The ALL-SG8610PM supports SFP-DDM (digital diagnostic monitor) function that greatly helps network administrator to easily monitor real-time parameters of the SFP transceivers, such as optical output power, optical input power, temperature, laser bias current, and transceiver supply voltage.

Technical Details:

Model	ALL-SG8610PM
Copper Ports	8-10/100/1000BASE-T RJ45 auto-MDI/MDI-X ports
Fiber Ports	2x1G BASE-X SFP interfaces, supports 100M/1G Mbps dual mode
PoE Ports	1~8-802.3af/802.3at PoE Injector Ports
Console Ports	1 x RS-232-to-RJ45 serial port (115200, 8, N, 1)
Switch Architecture	Store-and-Forward
Switch Fabric	20 Gbps/non-blocking
Throughput	14.88Mpps @64 bytes
Address Table	8K entries
Share Data Buffer	4 Mb
Jumbo Frame	9600 Bytes
SDRAM	1Gb
Flash Memory	128Mb
Flow Control	IEEE 802.3x pause frame for full-duplex Back pressure for half-duplex
Reset Button	>2 sec.: Factory default and reset
Power Supply	100~240V AC, 50/60Hz, 4A (max.)
Power Consumption	Max.150 watts/1122 BTU
PoE Standards	IEEE 802.3af Power over Ethernet/PSE IEEE 802.3at Power over Ethernet Plus/PSE
PoE Power Supply Type	Per Port 52V DC, 300mA. Max. 15.4 watts (IEEE 802.3af) Per Port 52V DC, 600mA. Max. 30 watts (IEEE 802.3at)
PoE Budget	130W
LED Indicators	Power: Green



	<p>Solid on- power work normal, off- power disconnected</p> <p>System: Green</p> <p>Blink -work normally, solid on- soft work abnormal, fast Blink – soft upgrade</p> <p>PoE: Yellow</p> <p>Solid on- PoE work normally, Off- PoE doesn't work, Blink - PoE overload</p> <p>10/100/1000T RJ45 Interfaces (Port 1 to Port 8): 1000 LNK/ACT (Green) Blink - port connected with data transmission; Solid on- port connected without data transmission</p> <p>100/1000Mbps SFP Interfaces (Port 9 to Port 10): Green</p> <p>Blink - port connected with data transmission; Solid on- port connected without data transmission</p>
EMC	<p>Surge Immunity:</p> <p>4KV Per: IEC61000-4-5</p> <p>ESD Protection:</p> <p>ESD Level 4 Per: IEC61000-4-2</p> <p>EFT Level 4 Per: IEC61000-4-4</p>
Layer2 Functions	
Port configuration	<p>Auto-negotiation Flow Control</p> <p>Port Mirror: TX/RX/BOTH; Many-to-1 monitor</p> <p>CPU Mirror</p> <p>Traffic statistics</p>
Link Aggregation	<p>Static link aggregation</p> <p>LACP(Dynamic Trunk/Static Trunk)</p> <p>Algorith based on Source/Destination MAC</p> <p>Algorithm based on Source/Destination IP</p>
MAC Table	<p>Aging Time</p>



	Static MAC address Dynamic MAC address management
VLAN	4094 Active VLANs 4094 VID 802.1Q Tag VLAN Port VLAN Protocol VLAN MAC VLAN Voice VLAN 802.1ad Q-in-Q tunneling Private VLAN (Protected port) GARP/GVRP
ACL	256ACLs L2, L3 e L4 Time-based ACL IP ACL MAC ACL MAC-IP ACL User-Defined ACL ICMPv6
Spanning tree	802.1D Spanning Tree Protocol (STP) 802.1w Rapid Spanning Tree Protocol (RSTP) 802.1s Multiple Spanning Tree Protocol (MSTP) Loop Guard Root Guard TC-BPDU Guard BPDU Guard BPDU Filter
Ring Protection	<20ms G.8032 ERPS Ring

Multicast	Fast Ring 256 groups IGMP v1/v2/v3 Snooping, Fast Leave MLD Snooping Multicast VLAN IGMP filter MVR Multicast Routing
QOS	8 mapping IDs to 8 level priority queues CoS port-based CoS 802.1p-based CoS DSCP-based Scheduling algorithms SP, WRR, SP+WRR Storm Control (Broadcast, Multicast, Unknown Unicast) Bandwidth control per port SWRR, DWRR for Scheduling Flow Redirect Precedence TOS Rate Limiting (Ingress/Egress) Stri Priority
Security Features	Port Security MAC address filter ARP Association (Manual, ARP scanning, DHCP snooping) ARP Protection



No. d'article: 193997
Numéro de fabricant: ALL-SG8610PM

	<p>AAA</p> <p>DAI</p> <p>DoS (Denial of Service)</p> <p>Classification of packages based on: End.MAC, IP End, TCP / UDP Ports, Protocol Type;</p> <p>802.1x Authentication (port-based e MAC-based)</p> <p>TACACS/TACACS+ Authentication</p> <p>RADIUS Authentication</p> <p>DHCP Filter</p> <p>Guest VLAN</p> <p>SSLv2/SSLv3/TLSv1</p> <p>SSHv1/SSHv2</p> <p>Restriction of WEB access based on: IP Address, And. MAC and Port;</p> <p>Port Isolation</p> <p>Loopback detection</p>
Management	<p>SNMP v1/v2c/v3 with Full Private MIBs</p> <p>RMON 4 groups</p> <p>WEB (HTTP/HTTPS)</p> <p>CLI (Telnet, Console, SSHv1/v2)</p> <p>Firmware upgrade via console/web/TFTP</p> <p>Configuration Backup/Reload</p> <p>Dual Firmware</p> <p>LLDP</p> <p>Configuration Export/Import</p> <p>CDP Aware</p> <p>OAM (IEEE802.3ah)</p> <p>CFM (IEEE802.1ag)</p> <p>sFlow</p>
Other Features	<p>DNS Client</p>



	<p>DHCP Relay DHCP Client DHCP Snooping DHCP Option 66 DHCP Option 67 DHCP Option 82 NTP/SNTP Client</p> <p>UPNP</p> <p>UDLD</p>
PoE management	<p>Total PoE power budget control</p> <p>Per port PoE function enable/disable PoE admin-mode control</p> <p>PoE port power feeding priority Per PoE port power limitation</p> <p>PD classification detection</p> <p>PD alive check PoE schedule</p> <p>Soft-reboot PoE Non-stop</p>
Maintenance	<p>Cable Diagnostics</p> <p>Ping</p> <p>SFP DDM (Digital Diagnostics Monitoring)</p> <p>Thermal protection</p> <p>System log (Local and Remote)</p> <p>Memory and CPU Monitoring</p>
Layer 3 functions	
Static Routing	<p>IPv4 Unicast: Static Routing(Software Base)</p> <p>IPv6 Unicast: Static Routing(Software Base)</p>
IPV6	<p>IPv6 neighbor discovery (ND)</p> <p>Path maximum transmission unit (MTU) discovery Internet Control Message Protocol (ICMP) version 6</p> <p>TCPv6/UDPv6</p> <p>Ping6</p>



No. d'article: 193997
Numéro de fabricant: ALL-SG8610PM

	Telnet(v6) Http/Https Interface IPV6 ACL IPV6
Dimension	280x213x44.5mm
Weight	2 kg
Working Temperature	-10°C to 45°C
Storage Temperature	-20°C to 70°C
MTBF	50,000hrs

Attributs

Attribut	Valeur
Anzahl Ports PoE/LAN:	8/0
Belüftung Switch:	Lüfterlos
Einsatzort Switch:	19"
LAN Geschwindigkeit:	1Gbit/s
Management:	full managed
PoE Budget:	<200 Watt
PoE Port Leistung:	30W at
SFP Geschwindigkeit:	SFP 1GBit
Poids:	2 Kg
Garantie:	24.00 Mois

Accessoires

No. d'article	Désignation
27947	ALL4750 Module MiniGBIC MULTIMODE
128033	ALLNET Switch Modul ALL4750-INDU SFP(Mini-GBIC), 1000Mbit MM
59426	ALL4751 Module MiniGBIC SINGLEMODE
128034	ALLNET Module de commutation ALL4751-INDU SFP(M-GBIC), 1G SM

No. d'article	Désignation
114334	ALLNET Switch Modul ALL4752 SFP(mini Gbic), 1000Mbit, LHX/LC
166757	ALLNET Switch Modul ALL4752-INDU SFP(Mini-GBIC), 1000Mbit, LX/LC, 20KM, Industrial, -40/+85 Grad,
59391	ALL4753 Module MiniGBIC SINGLEMODE
59393	ALL4755 Module miniGBIC SINGLEMODE
143548	ALLNET Switch Module ALL4756 SFP(Mini-GBIC), 1000Mbit, ZX/LC
136828	ALLNET Switch Module ALL4761 SFP(Mini-GBIC), 1000Mbit
193149	ALLNET Switch Modul ALL4761-INDU SFP(Mini-GBIC), 1000Mbit, WDM(Bidi)/LC, Tx1310nm/Rx1490nm, 9u, 20Km, Industrial -40/+85 Grad,
136829	ALLNET Switch Module ALL4762 SFP(Mini-GBIC), 1000Mbit
193150	ALLNET Switch Modul ALL4762-INDU SFP(Mini-GBIC), 1000Mbit, WDM(Bidi)/LC, Tx1490nm/Rx1310nm, 9u, 20Km, Industrial -40/+85 Grad,
140675	ALLNET Switch Module ALL4765 SFP(Mini-GBIC), 1000Mbit
208404	ALLNET Switch Modul ALL4765-INDU SFP(Mini-GBIC), 1000Mbit, RJ45(TP), Industrial -40/+85 Grad,
212816	ALLNET Switch smart managed 6 Port Gigabit 95W / 4x PoE / 1x Gigabit / 1x PoE 90W BT In / "ALL-SG8206PDM"
112532	ALLNET ALL-SG8205PD / unmanaged 5 Port Gigabit Switch, 2x Gi
118887	ALLNET ALL-SG8208PD / unmanaged 8 ports Giga Switch, 4x PoE
222870	ALLNET Switch unmanaged 5 Port - 5x GbE - PoE Budget 85W - 4x PoE af/at out 1xPoE bt 90W in - Fanless, DIN, PD-Input - ALL-SG8005PD-BT90
222870	ALLNET Switch unmanaged 5 Port - 5x GbE - PoE Budget 85W - 4x PoE af/at out 1xPoE bt 90W in - Fanless, DIN, PD-Input - ALL-SG8005PD-BT90
99305	ALLNET ALL95100 / TP Cat 6 Gigabit surge arrester
105684	ALLNET ALL95112 / 12Port Overvoltage protection TP/ALL-IP
115128	ALLNET / ALL95101 TP Cat 6 /ADSL / VDSL / ISDN Surge protect
198028	ALLNET TP Cat 6 Überspannungs-/Blitzschutz Surge Protector A
141254	Netzkabel 230V Schutzkontakt CEE7(Stecker)->Kaltgeräte IEC-C13(Buchse), 2m,Black IEC Lock
141255	Netzkabel 230V Schutzkontakt CEE7(Stecker)->Kaltgeräte IEC-C13(Buchse), 1m,Black IEC Lock
141256	Netzkabel 230V Schutzkontakt CEE7(Stecker)->Kaltgeräte IEC-C13(Buchse), 3m,Black IEC Lock
137775	ALLNET USV 600VA Line-Interactive, USB, LCD-Display
137779	ALLNET USV 1000VA Line-Interactive, USB, LCD-Display

No. d'article	Désignation
137780	ALLNET USV 1500VA Line-Interactive, USB, LCD-Display
137781	ALLNET USV 2000VA Line-Interactive, USB, LCD-Display
137901	ALLNET USV 1000VA Line-Interactive, USB/RS232, LCD-Display, 19"/Tower,
137902	ALLNET USV 1500VA Line-Interactive, USB/RS232, LCD-Display, 19"/Tower,
137903	ALLNET USV 2000VA Line-Interactive, USB/RS232, LCD-Display, 19"/Tower,
137904	ALLNET USV 3000VA Line-Interactive, USB/RS232, LCD-Display, 19"/Tower,
76117	RJ45, CAT6 250Mhz, 0,25m gris, S-STP(S/FTP)
76124	Cordon RJ45, CAT6 250Mhz, 1,0m gris, S-STP
76133	Cordon RJ45, CAT6 250Mhz, 1,0m gris, S-STP
76142	Cordon RJ45, CAT6 250Mhz, 1,5m gris, S-STP
76151	Cordon RJ45, CAT6 250Mhz, 2m gris, S-STP
76160	Cordon RJ45, CAT6 250Mhz, 3m gris, S-STP
76169	Cordon RJ45, CAT6 250Mhz, 5m gris, S-STP
76178	Cordon RJ45, CAT6 250Mhz, 7,5m gris, S-STP (S/FTP)
136637	Patchkabel RJ45, CAT6 250Mhz, 0,15m grau, S-STP(S/FTP), LSZH, Synergy 21,
234698	ALLNET Switch full managed Layer2+ zbh. Replacement bracket for ALL-SG8610 8 port

[Cliquez ici pour découvrir d'autres articles de cette catégorie dans notre boutique.](#)