

ALLNET Switch full managed 24 Port Gigabit 370W / 24x PoE+ /

>>> [Al artículo de la tienda](#)



EAN CODE



ALLNET Switch full managed 24 Port Gigabit 370W / 24x PoE+ / 4x SFP+ 10G / 19" / "ALL-SG8628PM-10G"

Highlights:

- 24 port Gigabit Layer2+ switch architecture (ports 1~24).
- 4 ports SFP+ 10G slots for optional GBICs compatible (ports 25~28)
- Supports various PoE management functions, including PoE schedule, PoE PD alive, etc.
- Supports SFP DDM & cable diagnostics
- Supports G.8032 ERPS, self-detection time < 20 ms
- Supports 1588 V2.0, transparent clock
- Supports port aggregation
- 4KV surge protection, 6KV contact/8KV air ESD protection
- Max. 370W PoE budget
- 19" angle or wall/table mounting possible

ALL-SG8628PM-10G is a L2+ managed switch with 24 gigabit Ethernet ports and 4 1G/10G dual speed SFP ports. The 24 Ethernet ports supports IEEE802.3.af/at PoE output, can work with PoE PD devices like IP cameras, wireless AP, doorbell etc. With Rich L2+ management function, it is easy to set up to meet the projects technical requirements. It is an ideal solution for CCTV surveillance, wireless coverage and other SMB applications.

Rich PoE Management function

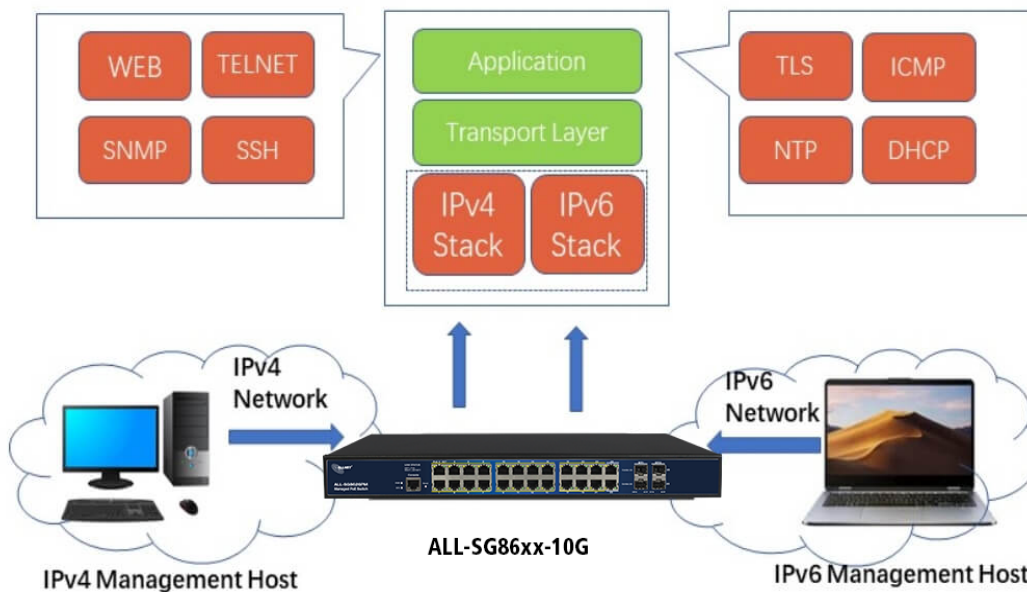
- PoE PD-alive check
- Scheduled power rebooting
- PoE schedule
- PoE usage monitoring
- Soft-reboot PoE Non-stop
- PoE port power feeding priority

10Gbps Uplink Capacity for Big Bandwidth Application

10G Ethernet is a big leap in the evolution of Ethernet. The 10G SFP+ slots supports dual-speed 10GBASE-SR/LR or 1000BASE-SX/LX, meaning the administrator now can flexibly choose the suitable SFP/SFP+ transceiver according to the transmission distance or the transmission speed required to extend the network efficiently. It is a cost-effective solution for SMB network to achieve the maximum performance of the 10G networks

Solution for IPv6 Networking

With the IPv6/IPv4 dual stack and other management functions, the ALL-SG8628PM-10G is the best choice for IP CCTV surveillance, VoIP and wireless solution providers to develop the IPv6 network. Meanwhile they help the SMBs to upgrade their network infrastructures to the IPv6 era without any extra investment.



Robust Layer 2 Features

The ALL-SG8628PM-10G can be programmed for advanced switch management functions, such as port aggregation, Q-in-Q VLAN, Spanning Tree Protocol, QoS, bandwidth control, ERPS, IGMP/MLD snooping etc. The ALL-SG8628PM-10G allows the operation of a high-speed trunk combining multiple ports.

Powerful Security Functions

The ALL-SG8628PM-10G provides a comprehensive access control list (ACL) for enforcing security to the edge. It can be used to restrict to network access by denying packets based on source and destination IP address, TCP/UDP port number or defined typical network applications. Its protection mechanism also comprises 802.1x

Port-based and MAC-based user and device authentication. With the private VLAN function, communication between edge ports can be prevented to ensure user privacy.

Enhanced Security and Traffic Control

The ALL-SG8628PM-10G supports DHCP Snooping, IP Source Guard and Dynamic ARP Inspection functions to prevent IP snooping from attack and discard ARP packets with invalid MAC address. The network administrator can now construct highly-secure corporate networks with considerably less time and effort than before.

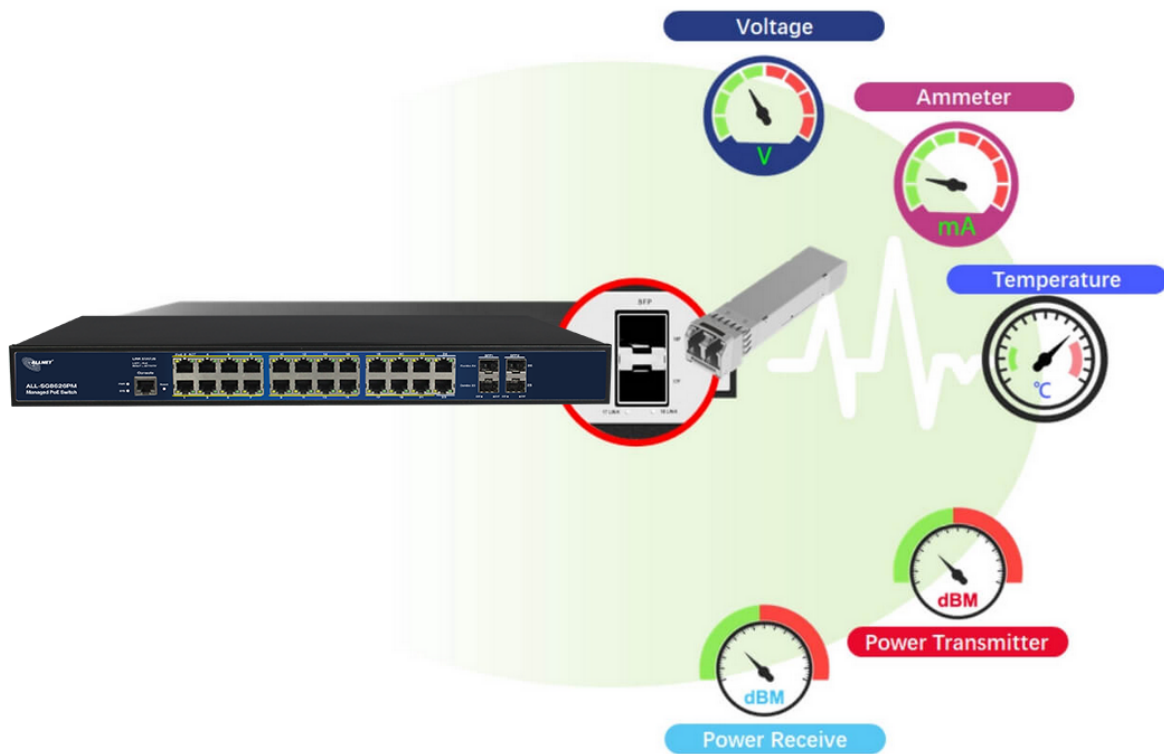
User-friendly Secure Management

For efficient management, ALL-SG8628PM-10G managed switch series is equipped with console, web and SNMP management interfaces. With management interface, ALL-SG8628PM-10G offers an easy-to-use, platform independent management and configuration facility. The ALL-SG8628PM-10G supports SNMP and it can be managed via any management software based on the standard SNMP v1 or v2 Protocol. Meanwhile the ALL-SG8628PM-10G offers Cisco-like command via Telnet or console port and customer doesn't need to learn new command from these switches. Moreover, the ALL-SG8628PM-10G offers the remotely secure management by supporting SSH, SSL and SNMP v3 connection where the packet content can be encrypted at each session.

Intelligent SFP DDM Function

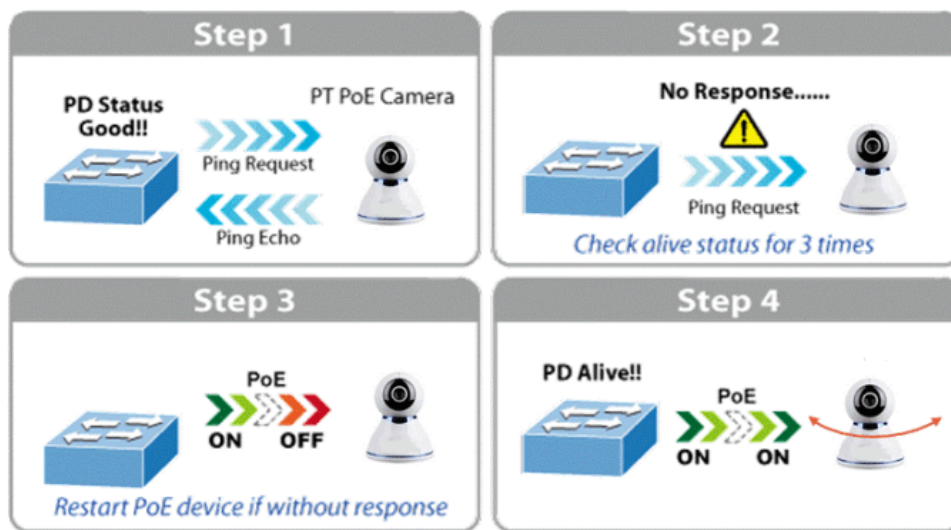
The ALL-SG8628PM-10G support SFP-DDM (Digital Diagnostic Monitor) function that greatly helps network administrator to easily monitor real-time parameters of the SFP and SFP+ transceivers, such as optical output power, optical input power, temperature, laser bias current, and transceiver supply voltage.

Digital Diagnostic Monitor (DDM)



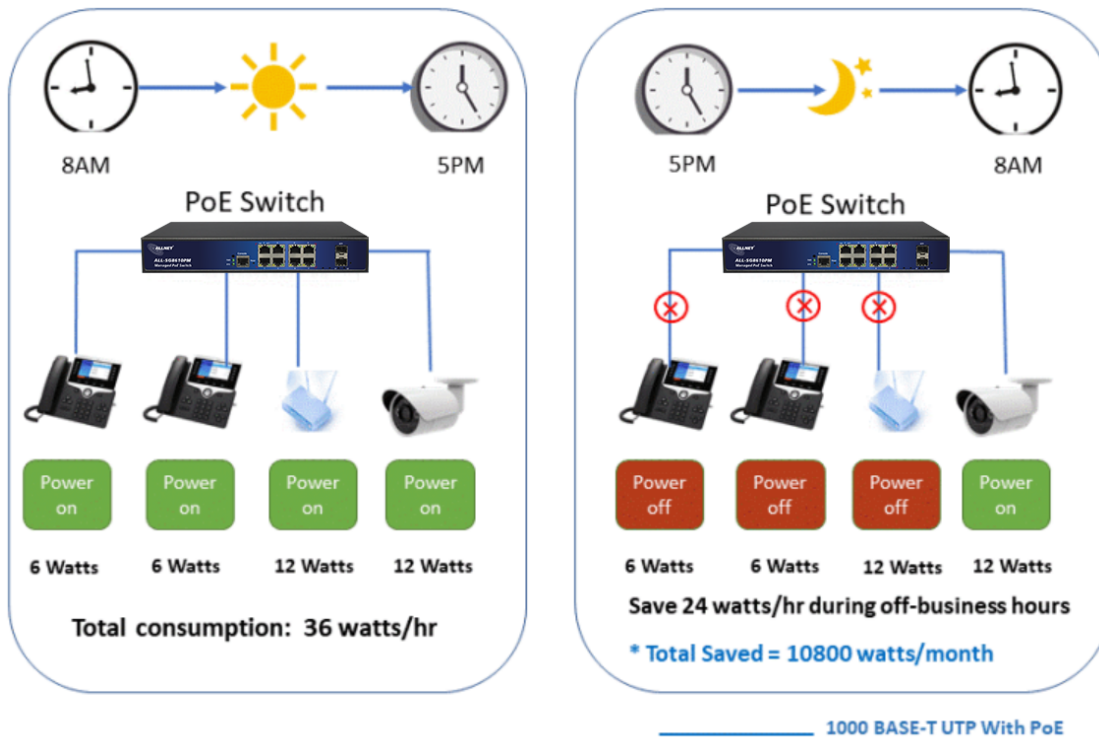
Smart PoE PD-Alive Check

ALL-SG8628PM-10G managed PoE switch can be configured to monitor connected PD status in real time. Once the PD stops working and responding, ALL-SG8628PM-10G will resume the PoE port power and bring the PD back to work. They will greatly enhance the network reliability through the PoE port resetting the PD's power source and reducing administrator management burden.



PoE Schedule Function for Energy Saving

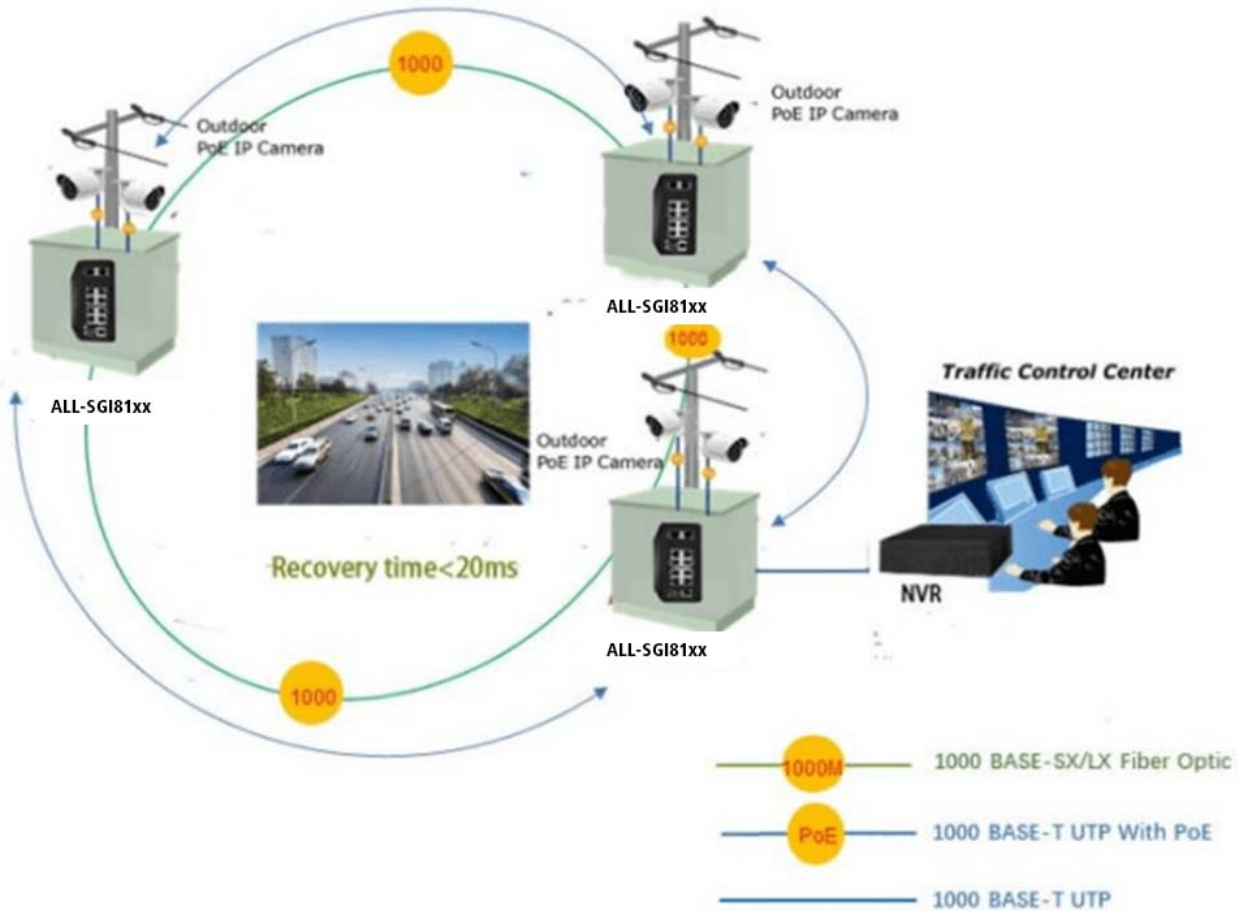
For environmental protection purpose, the ALL-SG8628PM-10G switch Ethernet PoE can effectively control the power supply besides its capability of giving high watts power. The PoE schedule function helps to enable or disable PoE power feeding for each PoE port during specified time intervals and it is a powerful function to help SMBs or enterprises save power and money.



Scheduled PD Re-starting

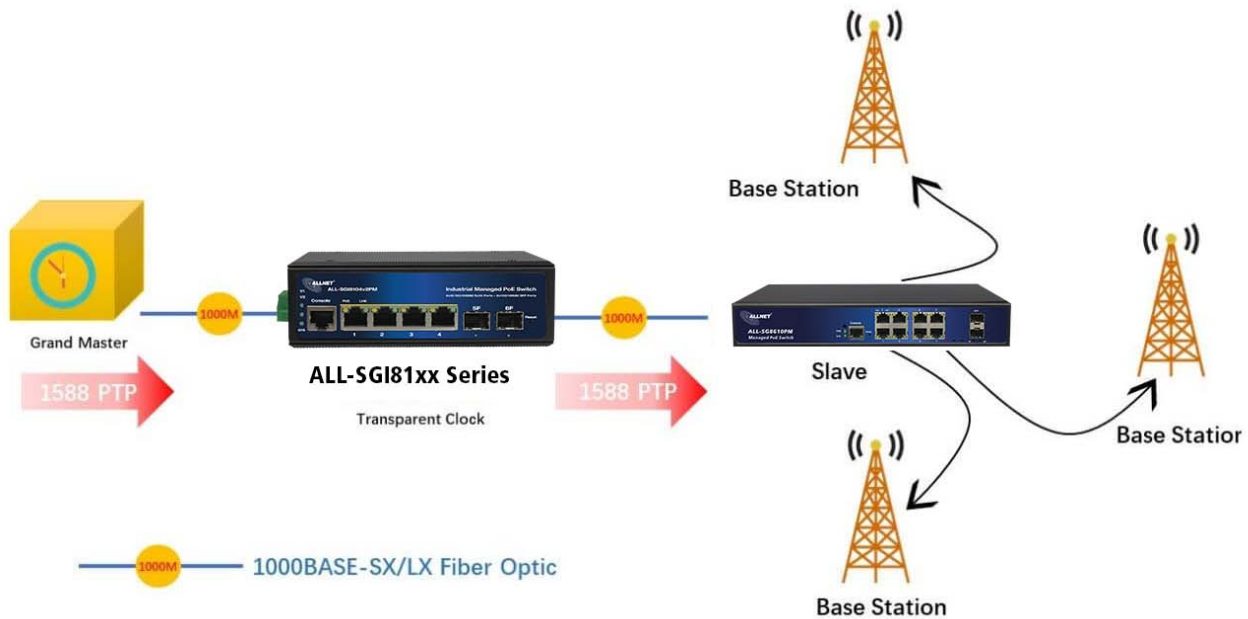
The ALL-SG8628PM-10G smart switch PoE allows each of the connected PoE IP cameras or PoE wireless access points to reboot at a specific time each week. Therefore, it will reduce the chance of IP camera or AP crash resulting from buffer overflow.

ERPS Ring for Video Transmission Redundancy



1588 Time Protocol for Industrial Computing Networks

The ALL-SG8628PM-10G is ideal for telecom and Carrier Ethernet applications, supporting MEF service delivery and timing over packet solutions for IEEE 1588 and synchronous Ethernet.



Technische Daten:

Model	ALL-SG8626-10PM
Copper Ports	24-10/100/1000BASE-T RJ45 auto-MDI/MDI-X ports
Fiber Ports	4-10G SFP interfaces
PoE Ports	1~24-802.3af/802.3at PoE Injector Ports
Console Ports	1 x RS-232-to-RJ45 serial port (115200, 8, N, 1)
Switch Architecture	Store-and-Forward
Switch Fabric	128Gbps/non-blocking
Throughput	94.23Mpps @64 bytes
Address Table	32K entries
Share Data Buffer	32Mb
Jumbo Frame	9600 Bytes
SDRAM	2Gb
Flash Memory	128Mb
Flow Control	IEEE 802.3x pause frame for full-duplex Back pressure for half-duplex
Reset Button	>2 sec.: Factory default and reset
Power Supply	100~240V AC, 50/60Hz, 4A (max.)
Power Consumption	Max. 370 watts
PoE Standards	IEEE 802.3af Power over Ethernet/PSE



	IEEE 802.3at Power over Ethernet Plus/PSE
PoE Power Supply Type	Per Port 52V DC, 300mA. Max. 15.4 watts (IEEE 802.3af) Per Port 52V DC, 600mA. Max. 30 watts (IEEE 802.3at)
LED Indicators	Power: Green Solid on- power work normal, off- power disconnected System: Green Blink-work normally, solid on- soft work abnormal, fast Blink - soft upgrade PoE: Yellow Solid on- PoE work normally, Off- PoE doesn't work, Blink - PoE overload 10/100/1000T RJ45 Interfaces (Port 1 to Port 48): 1000 LNK/ACT (Green) Blink - port connected with data transmission; Solid on- port connected without data transmission 1G/10G SFP Interfaces (Port 25 to Port 28): Blue Blink - port connected with data transmission; Solid on- port connected without data transmission
EMC	Surge Immunity: 4KV Per: IEC61000-4-5 ESD Protection: ESD Level 4 Per: IEC61000-4-2 EFT Level 4 Per: IEC61000-4-4
Layer2 Functions	
Port configuration	Auto-negotiation Flow Control Port Mirror: TX/RX/BOTH; Many-to-1 monitor CPU Mirror Traffic statistics
Link Aggregation	Static link aggregation LACP (Dynamic Trunk/Static Trunk) Algorithm based on Source/Destination MAC



	Algorithm based on Source/Destination IP
MAC Table	Aging Time Static MAC address Dynamic MAC address management
VLAN	4094 Active VLANs 4094 VID 802.1Q Tag VLAN Port VLAN Protocol VLAN MAC VLAN Voice VLAN 802.1ad Q-in-Q tunneling Private VLAN (Protected port) GARP/GVRP
ACL	512ACLs L2, L3 e L4 Time-based ACL IP ACL MAC ACL MAC-IP ACL User-Defined ACL ICMPv6
Spanning tree	802.1D Spanning Tree Protocol (STP) 802.1w Rapid Spanning Tree Protocol (RSTP) 802.1s Multiple Spanning Tree Protocol (MSTP) Loop Guard Root Guard TC-BPDU Guard BPDU Guard BPDU Filter
Ring Protection	<20ms G.8032 ERPS Ring Fast Ring
Multicast	1024 groups IGMP v1/v2/v3 Snooping, Fast Leave MLD Snooping Multicast VLAN IGMP filter



	<p>MVR Multicast Routing</p>
QOS	<p>8 mapping IDs to 8 level priority queues CoS port-based CoS 802.1p-based CoS DSCP-based Scheduling algorithms SP, WRR, SP+WRR Storm Control (Broadcast, Multicast, Unknown Unicast) Bandwidth control per port SWRR, DWRR for Scheduling Flow Redirect Precedence TOS Rate Limiting(Ingress/Egress) Stri Priority</p>
Security Features	<p>Port Security MAC address filter ARP Association (Manual, ARP scanning, DHCP snooping) ARP Protection AAA DAI DoS (Denial of Service) Classification of packages based on: End.MAC, IP End, TCP / UDP Ports, Protocol Type; 802.1x Authentication (port-based e MAC-based) TACACS/TACACS+ Authentication RADIUS Authentication DHCP Filter Guest VLAN SSLv2/SSLv3/TLSv1 SSHv1/SSHv2 Restriction of WEB access based on: IP Address, And. MAC and Port; Port Isolation Loopback detection</p>
Management	<p>SNMP v1/v2c/v3 with Full Private MIBs RMON 4 groups WEB (HTTP/HTTPS) CLI (Telnet, Console, SSHv1/v2) Firmware upgrade via console/web/TFTP Configuration Backup/Reload Dual Firmware LLDP Configuration Export/Import CDP Aware OAM (IEEE802.3ah)</p>



Número de artículo: 208886
 Número de fabricante: ALL-SG8628PM-10G

	CFM (IEEE802.1ag) sFlow Telnet
Synchronization, IEEE1588	Support IEEE1588v2 transparent clock
Other Features	DNS Client DHCP Relay DHCP Client DHCP Snooping DHCP Option 66 DHCP Option 67 DHCP Option 82 NTP/SNTP Client UPNP UDLD
PoE management	Total PoE power budget control Per port PoE function enable/disable PoE admin-mode control PoE port power feeding priority Per PoE port power limitation PD classification detection PD alive check PoE schedule Soft-reboot PoE Non-stop
Maintenance	Cable Diagnostics Ping SFP DDM (Digital Diagnostics Monitoring) Thermal protection System log (Local and Remote) Memory and CPU Monitoring Tracert/ tracer 6
Layer 3 functions	
Static Routing	IPv4 Unicast: Static Routing(Software Base) IPv6 Unicast: Static Routing(Software Base)
IPV6	IPv6 neighbor discovery (ND) Path maximum transmission unit (MTU) discovery Internet Control Message Protocol (ICMP) version 6 TCPv6/UDPv6 Ping6 Telnet(v6) Http/Https Interface IPV6 ACL IPV6
Dimension	440x290x44.5 mm
Weight	4.5 kg



Número de artículo: 208886
Número de fabricante: ALL-SG8628PM-10G

Working Temperature	-10 °C to 45 °C
Storage Temperature	-20 °C to 70 °C
MTBF	50,000hrs

Atributos

Atributo	Valor
Anzahl Ports PoE/LAN:	24/0
Belüftung Switch:	Mit Lüfter
Einsatzort Switch:	19"
LAN Geschwindigkeit:	1Gbit/s
Management:	full managed
PoE Budget:	<500 Watt
PoE Port Leistung:	30W at
SFP Geschwindigkeit:	SFP+ 10Gbit;
Peso:	4.3 Kg
Garantía:	24.00 Meses

Accesorios

Número de artículo	Denominación
146245	ALLNET Ventilador de repuesto para Switch SG8428P
27947	ALLNET ALL4750 Módulo Mini-GBIC 1000Mbit, SX/LC
59426	ALLNET ALL4751 Módulo Mini-GBIC 1x 1000Mbit, LX/LC
114334	ALLNET Switch Modul ALL4752 SFP(mini Gbic), 1000Mbit, LHX/LC
59391	ALLNET ALL4753 Módulo Mini-GBIC 1x 1000Mbit EX/LC
59393	ALLNET ALL4755 Módulo Mini-GBIC 1x 1000Mbit, ZX/LC
143548	ALLNET Switch Module ALL4756 SFP(Mini-GBIC), 1000Mbit, ZX/LC
141113	ALLNET ALL4780 / Switch Modul (Mini-GBIC), 2Wire-Set, max. 1
75932	Synergy 21 S215003 - Latiguillo CAT5e FTP RJ-45 gris, 0.25m
75939	Synergy 21 S215010 - Latiguillo CAT5e FTP RJ-45 gris, 0.50m

Número de artículo	Denominación
75946	Synergy 21 S215017 - Latiguillo CAT5e FTP RJ-45 gris, 1m
75959	Synergy 21 S215030 - Latiguillo CAT5e FTP RJ-45 gris, 2m
75966	Synergy 21 S215037 - Latiguillo CAT5e FTP RJ-45 gris, 3m
75973	Synergy 21 S215044 - Latiguillo CAT5e FTP RJ-45 gris, 5m
75979	Synergy 21 S215050 - Latiguillo CAT5e FTP RJ-45 gris, 7.5m
75986	Synergy 21 S215057 - Latiguillo CAT5e FTP RJ-45 gris, 10m
76091	Synergy 21 S215162 - Latiguillo CAT5e S-FTP RJ-45 gris, 15m
76029	Synergy 21 S215100 - Latiguillo CAT5e S-FTP RJ-45 gris, 0.25
76036	Synergy 21 S215107 - Latiguillo CAT5e S-FTP RJ-45 gris, 0.50
76043	Synergy 21 S215114 - Latiguillo CAT5e S-FTP RJ-45 gris, 1m
76056	Synergy 21 S215127 - Latiguillo CAT5e S-FTP RJ-45 gris, 2m
76063	Synergy 21 S215134 - Latiguillo CAT5e S-FTP RJ-45 gris, 3m
76070	Synergy 21 S215141 - Latiguillo CAT5e S-FTP RJ-45 gris, 5m
76077	Synergy 21 S215148 - Latiguillo CAT5e S-FTP RJ-45 gris, 7.5m
76084	Synergy 21 S215155 - Latiguillo CAT5e S-FTP RJ-45 gris, 10m
76091	Synergy 21 S215162 - Latiguillo CAT5e S-FTP RJ-45 gris, 15m
76117	Synergy 21 S216004 - Latiguillo CAT6 S-STP RJ-45 gris, 0.25m
76124	Synergy 21 S216012 - Latiguillo CAT6 S-STP RJ-45 gris, 0.5m
76133	Synergy 21 S216022 - Latiguillo CAT6 S-STP RJ-45 gris, 1m
76151	Synergy 21 S216041 - Latiguillo CAT6 S-STP RJ-45 gris, 2m
76160	Synergy 21 S216051 - Latiguillo CAT6 S-STP RJ-45 gris, 3m
76169	Synergy 21 S216061 - Latiguillo CAT6 S-STP RJ-45 gris, 5m
76178	Synergy 21 S216070 - Latiguillo CAT6 S-STP RJ-45 gris, 7.5m
76187	Synergy 21 S216079 - Latiguillo CAT6 S-STP RJ-45 gris, 10m
76196	Synergy 21 S216088 - Latiguillo CAT6 S-STP RJ-45 gris, 15m
140955	TP(RJ45) POE-Tester, at/af, Endspan/Midspan, standard, Synergy 21,
141255	Netzkabel 230V Schutzkontakt CEE7(Stecker)->Kaltgeräte IEC-C13(Buchse), 1m,Black IEC Lock
141254	Netzkabel 230V Schutzkontakt CEE7(Stecker)->Kaltgeräte IEC-C13(Buchse), 2m,Black IEC Lock
141256	Netzkabel 230V Schutzkontakt CEE7(Stecker)->Kaltgeräte IEC-C13(Buchse), 3m,Black IEC Lock

Número de artículo	Denominación
188424	CyberPower SAI Interactiva 600VA/360W
188433	CyberPower SAI Interactiva 650VA/360W
188435	CyberPower SAI Interactiva 1000VA/600W
188439	CyberPower SAI Interactivo 1500VA/900W
146282	ALLNET Switch Module ALL4767 SFP+(Mini-GBIC), 10Gbit
101189	ALLNET ALL4757 / Switch module SFP+ (mini Gbic), 10Gbit, SR/
149613	ALLNET Switch Module ALL4757-INDU SFP+(Mini-GBIC), 10Gbit
101190	ALLNET ALL4758 - Módulo mini-Gbic 10Gbit LR/LC
149616	ALLNET Switch Module ALL4758-INDU SFP+(Mini-GBIC), 10Gbit
208360	ALLNET Switch Modul ALL4767-INDU SFP+(Mini-GBIC), 10Gbit, RJ45(TP), uncodiert, Industrial -40/+85 Grad,
139776	ALLNET Switch Module ALL4763 SFP+(Mini-GBIC), 10Gbit
139777	ALLNET Switch Module ALL4764 SFP+(Mini-GBIC), 10Gbit
191685	ALLNET 4768 Mini-GBIC 10Gbit LR/LC hasta 40Km
191686	ALLNET 4769 Mini-GBIC 10Gbit LR/LC hasta 80Km

[Haga clic aquí para descubrir más artículos de esta categoría en nuestra tienda.](#)