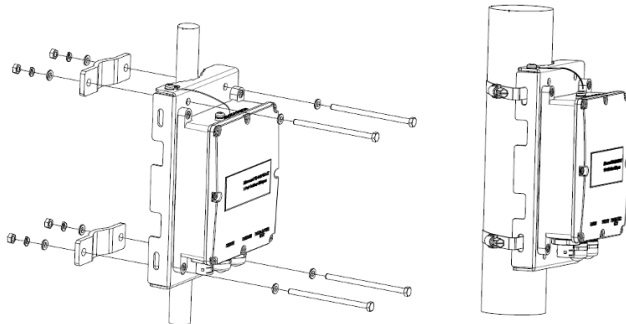


A technical drawing of a rectangular plate, likely a component for a machine. The plate features two large rectangular cutouts in the center, separated by a vertical divider. The plate has several mounting holes: four along the top edge, four along the bottom edge, and two on each of the side flanges. The side flanges have a stepped profile. The drawing is a perspective view showing the top and front faces.



Quantity	Name
1	Mount bracket
2	Worm clamp
2	Omega
6	M5/16 flat screw
2	M5 lock tooth washer
2	M5 flat washer
4	M6/110 hex screw
8	M6 flat washer
4	M6 spring washer
4	M6 nut

Technical Support

For technical support, please visit the Microchip Technical Support Portal at www.microchip.com/support.

Ordering Information

Part Number	Name	Description
PD-OUT/MBK/ET	Outdoor MBK	Mounting bracket for the ET family

Contact Microchip for other options

About Microchip mPoE



Microchip multi-Power over Ethernet (mPoE) is a technology that powers any wired network device seamlessly and efficiently, making it the ideal solution for Ethernet-based applications. Leveraging a uniquely designed algorithm, this technology solves interoperability issues between different PoE standards and legacy solutions to provide an international network power standard. As a pioneer in PoE technology, we offer a comprehensive end-to-end portfolio of PoE solutions comprised of PoE ICs and PoE systems (midspans/injectors and switches).