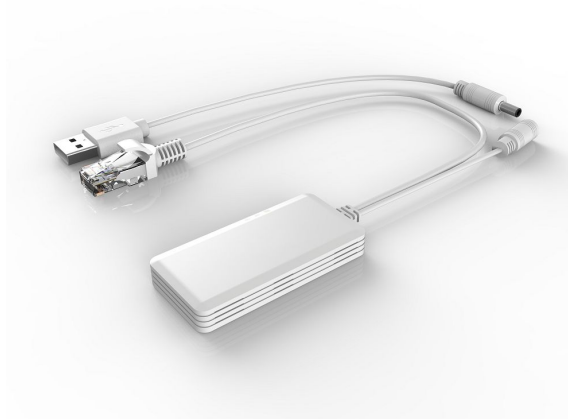


## ALLNET ALL-WCL1200AC / 1200Mbit Wireless Client



### EAN CODE



### HIGHLIGHTS

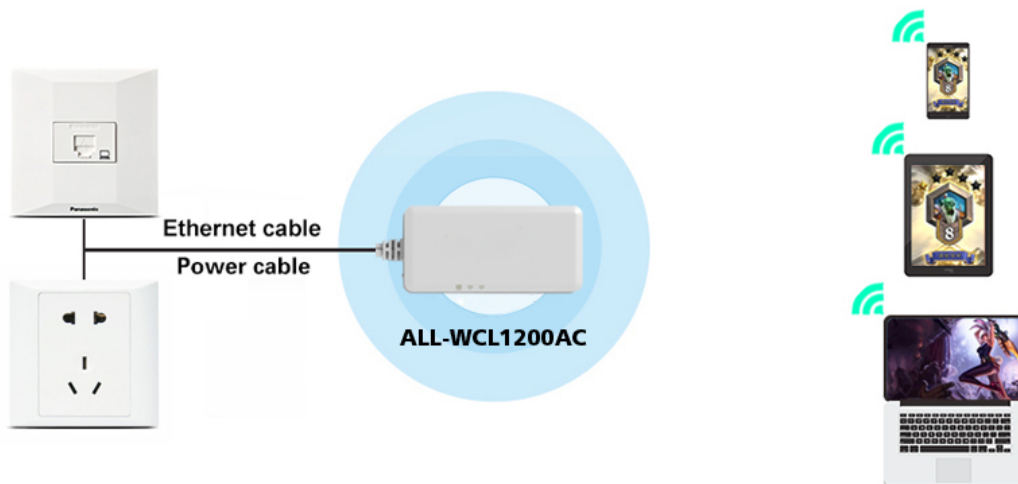
- Support wide voltage DC5-15V power supply, two-stage automatic overvoltage protection;
- Support both 2.4G and 5G band;
- RF power: 2.4G--14.5dBm, 5G 19dBm/23dBm Adjustable;
- Support WiFi transmission protocols such as 802.11ac and 802.11n;
- WiFi transmission rate: 300Mbps (2.4G) + 900Mbps (5G);
- Point-to-point barrier-free maximum transmission distance: 300 meters (802.11A);
- Support connecting more than 20pcs WiFi terminal at the same time;
- Adopt temperature compensated auto frequency control technology (TAFC), WiFi signal is more stable and not easy to drop;
- Original creation VDNS virtual domain configuration technology to solve the user's trouble of configuration;
- Built-in heat sink with convection cooling holes on both sides of the housing for more efficient heat dissipation;
- WiFi intelligent bridge function, wireless to wired, wired to wireless intelligent switching;
- Support manually close SSID broadcast, manually close WiFi hardware;
- Support WEB management, English configuration interface;
- Support SSA signal strength detection and reporting function to realize WiFi mobile positioning;
- Working environment temperature: -40 ° C to 55 ° C;
- Support IP layer transparent transmission and MAC layer transparent transmission two bridge modes to meet various bridge applications:
- IP layer transparent transmission (factory default), transparent transmission of IP layer data, can meet most of the bridge applications;
- MAC layer transparently transmits all data above the MAC layer (link layer) and the MAC layer, including IP layer data;

- MAC transparent transmission can solve some special applications for MAC layer encryption, such as GoPro camera, Cisco AP, Hikvision monitoring system, etc.

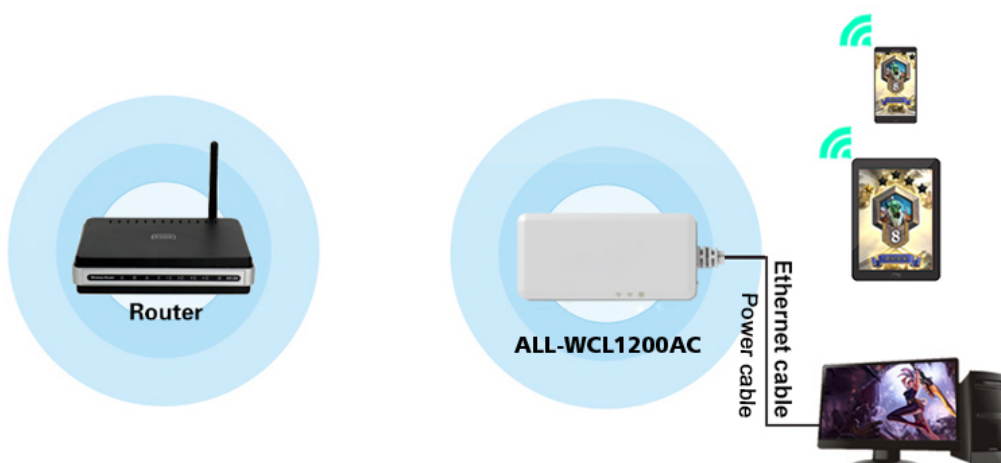
## Application-Szenarios:

# Application Mode Introduction

**AP Mode:** AP mode Wired networks to wireless access, suit for the scene that the Ethernet cable access to the computer to access the Internet without dialing.



**Repeater Mode:** Repeater mode can extend the existing network, easy network expansion. And can convert WiFi to RJ45 network, to a computer using a network cable to the Internet.



# Wireless Monitoring Application Diagram

The best solution of remote video surveillance by using **ALL-WCL1200AC** point to point or multipoint wireless connectivity

## Video surveillance applications

Solution one Camera---Bridge Bridge---Recorder---Monitor



Solution Two Camera 1,2,3---Bridge Bridge---Recorder---Monitor



Solution Three Camera 1,2,3---Switch-Bridge Bridge---Recorder---Monitor



## Technical Details:

Protocol Standards	IEEE 802.11ac, IEEE 802.11a; IEEE 802.11n, IEEE 802.11g, IEEE 802.11b;
Transmission rate	2.4GHz band: 300Mbps

	5GHz band: 900Mbps
External interface	A USB/DC power cable; A set of 10/100m adaptive Ethernet cable
Button	Reset button (long press 5 seconds, then release, the device will automatically restore the factory )
LED	Status instruction: Ethernet port status light (Yellow); 2.4G WiFi connection status light (Blue); 5G WiFi connection status light (Green);
Antenna	Built-in 2pcs Smart omnidirectional 2.4G Antennas, 1.5dbi; Built-in 2pcs Smart omnidirectional 5G Antennas, 1.5dbi;
Product size	94mm x 45mm x 15mm(L x W x H)
Item weight	72g

## Images supplémentaires





No. d'article: 168029  
Numéro de fabricant: ALL-WCL1200AC





No. d'article: 168029  
Numéro de fabricant: ALL-WCL1200AC

## Accessoires

No. d'article	Désignation
99305	ALLNET ALL95100 / TP Cat 6 Gigabit surge arrester
124147	banana pi zbh. Netzteil 5V/2A MicroUSB
158941	Rock Pi 4 Adaptateur d'alimentation électrique QC 3.0