

Beschreibung und Auf-/Einbauanleitung ALL1084

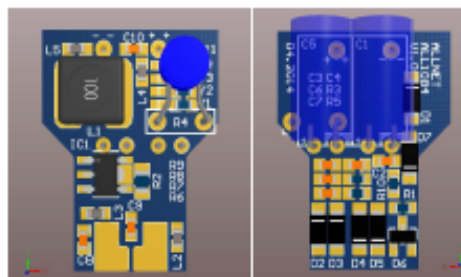
Datasheet

ALL1084 - LED constant current power supply

General information

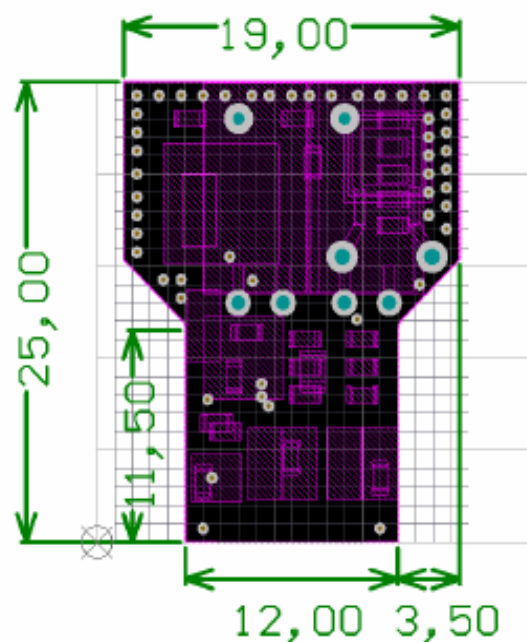
The ALL1084 power supply represents a non isolated high efficiency LED driver for use in low voltage LED lighting products like GX5.3-lamps from 1W to 9W.

Operating from AC and DC supplies of 8V/12V to 14V, the ALL1084 is capable of driving from one up to three LEDs in series in one up to three strings with 1000mA ($\pm 10\%$). The typical efficiency is about 77-85%.



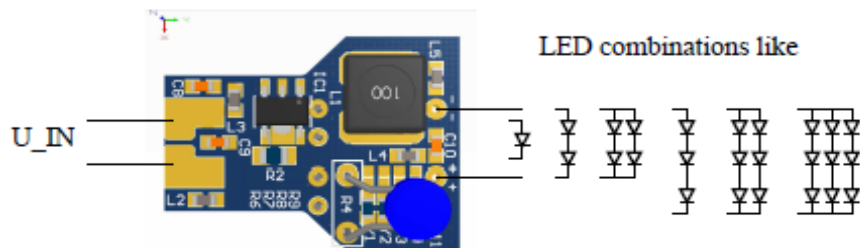
The ALL1084 includes fault protection modes for LED overtemperature (with active power derating) and overvoltage clamping. It features an internally overvoltage clamping above 14VAC/18VDC which protects the device from voltage spikes of inductive switching (50Hz line transformers).

With extremely low EMI interferences (refer to EMI section) the ALL1084 meets the EMC regulatories EN55015/55022 Class B.



Beschreibung und Auf-/Einbauanleitung ALL1084

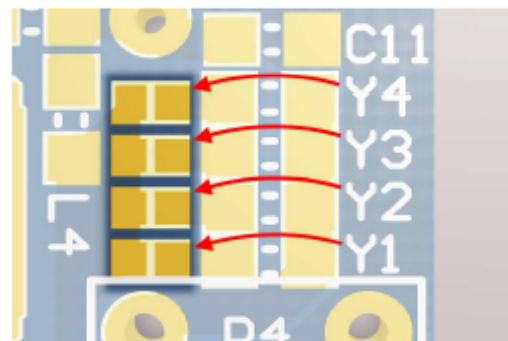
Connecting diagram:



Configuration:

The table shows the coding for the require current. Bridge the connector to activate.

Y4	Y3	Y2	Y1	configuration	I_LED [mA]
0	0	0	0	0	210
0	0	0	1	1	270
0	0	1	0	2	330
0	0	1	1	3	390
0	1	0	0	4	470
0	1	0	1	5	520
0	1	1	0	6	590
0	1	1	1	7	650
1	0	0	0	8	670
1	0	0	1	9	720
1	0	1	0	10	790
1	0	1	1	11	840
1	1	0	0	12	920
1	1	0	1	13	980
1	1	1	0	14	1050
1	1	1	1	15	1100



1 = short
0 = open

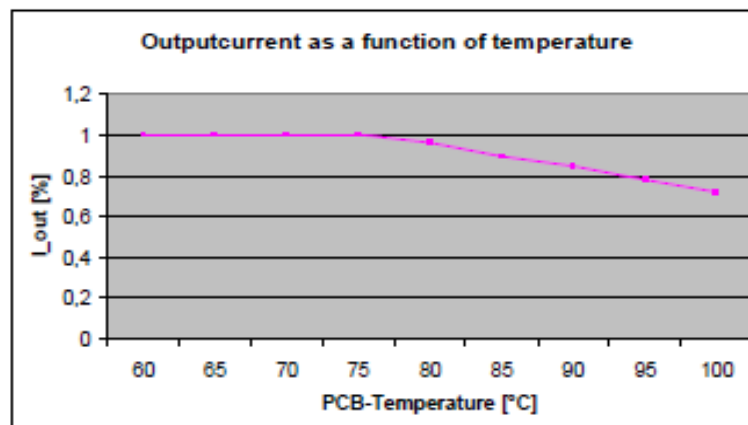
Technical Data:

- Input voltage (normal mode): 12Vac / 12Vdc
- Accepted input voltage: 8...18Vdc / 8...14Vac (LED current maybe vary, refer to diagrams)
- Output current: 210...1100mA (as a function of configuration)
- Constant current behaviour (CC)
- Output voltage range: < Input voltage
- Temperature range: -25 to 75°C
- Overall efficiency: 77-85%
- Temperature derating: Power reducing above 75°C PCB temperature



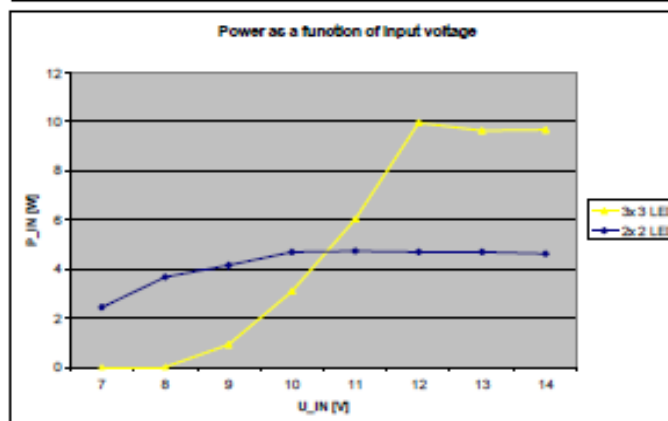
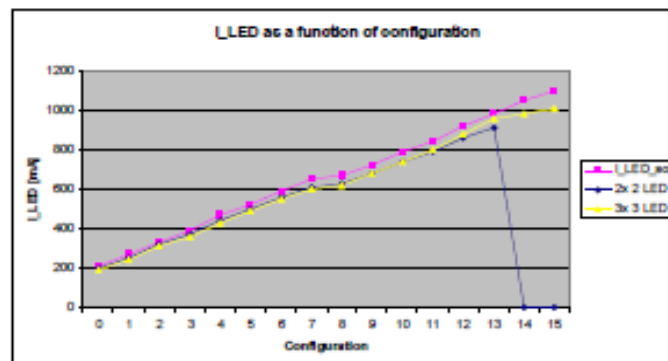
Beschreibung und Auf-/Einbauanleitung ALL1084

Temperature behaviour (typical):



Thermal derating at 75°C PCB-temperature

Technical diagrams:



Beschreibung und Auf-/Einbauanleitung ALL1084

EMI pre-compliance measurements:



Radiated emissions measurement at 5W (max hold)