

Synergy 21 LED Controller RGB-WW (RGB-CCT) DC12/24V *Milight/Miboxer*



RGB-WW (RGB-CCT) LED Controller, für z.B. LED Strips

Product Name: 2.4GHz RGB+CCT LED Strip Controller

Model No.: FUT039

Working Voltage: DC12V~24V

Working Temperature: -20~60°C

Output Max: 6A/Channel

Total Output Max: 12A

RF: 2.4GHz

Transmitting power: 6dBm

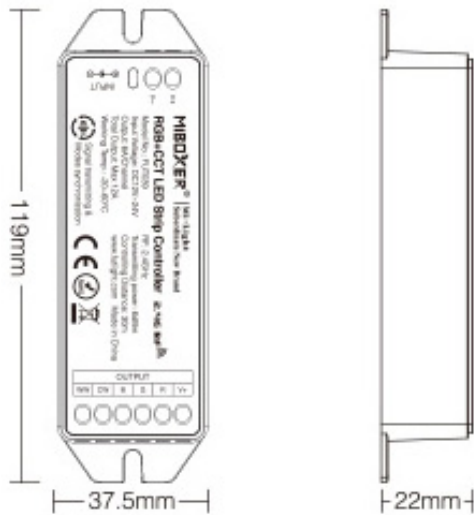
Control Distance: 30m

Output connection: Common anode

Merkmale

Merkmal	Wert
CC oder CV:	CV
Lichtfarbe:	RGB-WW
Gewicht:	0.1 Kg

Weitere Bilder





Brightness adjustable
Color temperature adjustable

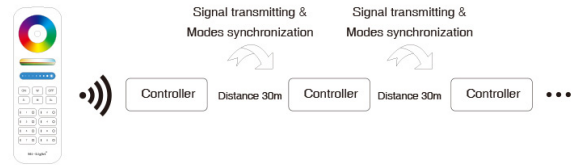
Brightness adjustable, Adjust the color temperature from 2700-6500K, make the light you want

Signal transmitting

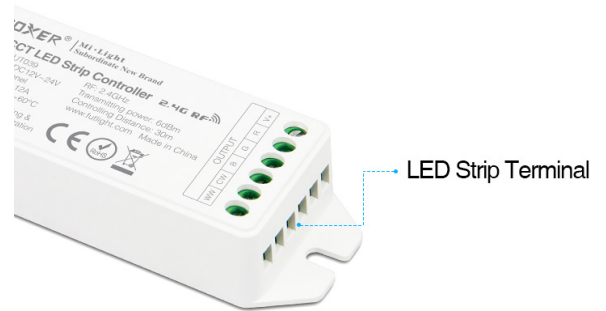
One strip controller can transmit the signals from the remote control to another controller within 30m, as long as there is a strip controller within 30m, the remote control distance can be limitless.

Modes synchronization

Different controllers can work synchronously when they are started at different times, controlled by the same remote, under same dynamic mode and within 30m distance.

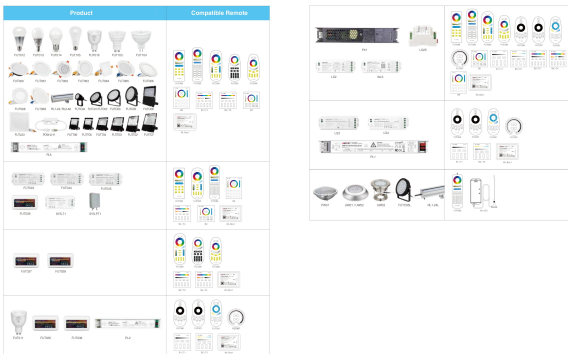


DC 12V~24V Available



LED Strip Terminal

COMPATIBLE REMOTE SHEET



Zubehör

Art.-Nr.	Name
76730	Synergy 21 Netzteil - 12V 36W Hohlstecker
147981	Synergy 21 LED Fernbedienung RGB-WW (RGB-CCT) 8 Zonen *Milight/Miboxer*
147982	Synergy 21 LED Fernbedienung RGB-WW (RGB-CCT) 4 Zonen *Milight/Miboxer*
148005	Synergy 21 LED Fernbedienung Smart Panel RGB-WW (RGB-CCT) 4 Zonen *Milight/Miboxer*
148006	Synergy 21 LED Fernbedienung Smart Panel RGB-WW (RGB-CCT) 8 Zonen *Milight/Miboxer*