

ALLNET Switch full managed Layer2+ 10 Port • 8x GbE • PoE Budget 130W • 8x PoE at • 2x SFP • 19" • Fanless • ALL-SG8610PM

>>> [Go to the shop article](#)



EAN CODE



ALLNET Switch full managed Layer2+ 10 Port • 8x GbE • PoE Budget 130W • 8x PoE at • 2x SFP • 19" • Fanless • ALL- SG8610PM

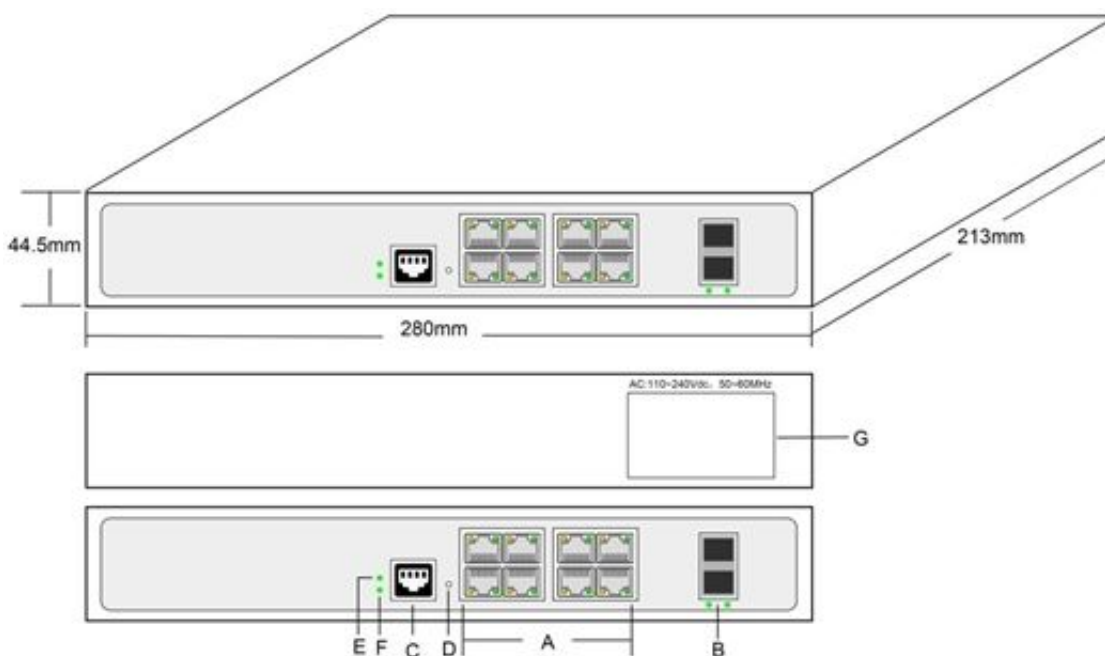
Highlights:

- 8-port 10/100/1000Mbps with full PoE support
- 2x SFP slots for optional MiniGBICS
- PoE power 4x a' 30 Watt (IEEE802.3at or 8x IEEE802.3af)
- FANLESS DESIGN with internal power supply unit
- Supports L2+ switching features such as 802.1Q VLAN, mirroring, port isolation, IGMP snooping, DHCP snooping, LLDP, POE+ management, IP source guard, ARP inspection, ACLs etc.
- Support of Spanning Tree STP(802.1D) and RSTP(802.1W) and MSTP(802.1s).
- Support advanced management via WEB, CLI, TELNET, SSH, SNMP.
- Support cable diagnosis and SFP DDM.
- Support PoE management, such as PoE schedule, PoE PD alive.
- Supports G.8032 quick ring protocol. Self recovery time <20ms.
- Support DDM, SFP digital diagnostic monitoring
- Support IPV4 and IPV6 static routing functions.
- Support memory and CPU monitoring
- 4KV surge protection, 6KV contact/8KV air protection
- PoE budget 130W

Product Description:

The ALL-SG8610PM is a managed Layer 2+ Gigabit PoE switch that has intelligent PoE features to improve the availability of critical business applications. It offers IPv6/IPv4 management and an integrated L2+ Gigabit switching engine along with 8*10/100/1000BASE-T ports with 30 watts of 802.3at PoE+ and 2 Gigabit SFP slots. With a total power budget of up to 130W for various types of PoE applications, it provides fast, secure and cost-effective Power-over-Ethernet network solutions for IP surveillance in small businesses and enterprises.

The ALL-SG8610PM is programmed for advanced switch management features such as 802.1Q VLAN and Q-in-Q VLAN, Multiple Spanning Tree Protocol (MSTP), Loop and BPDU Guard, IGMP Snooping and MLD Snooping. In addition, Link Layer Discovery Protocol (LLDP) is included as a Layer 2 protocol to discover basic information about neighboring devices in the local broadcast domain.



- | | |
|--------------------------------------|--------------------------------|
| A: 8x 10/100/1000Mbps PoE RJ45 Ports | B: 2x Gigabit SFP Uplink Ports |
| C: Console Port | D: Reset Key |
| E: Power LED Indicator | F: System Status LED Indicator |
| G: AC Power Input: 100~240V, 50~60Hz | |

Rich PoE Management Function

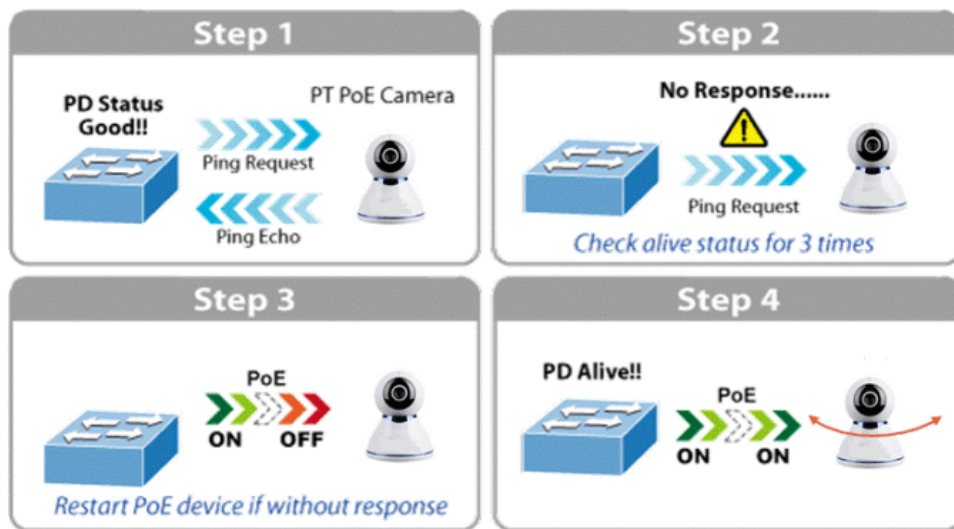
Being the managed PoE switches for CCTV surveillance, wireless and VoIP networks, ALL-SG8610PM features the following special PoE management functions:

- PoE PD-alive check
- Scheduled power rebooting
- PoE schedule
- PoE usage monitoring
- Soft-reboot PoE Non-stop

- PoE port power feeding priority

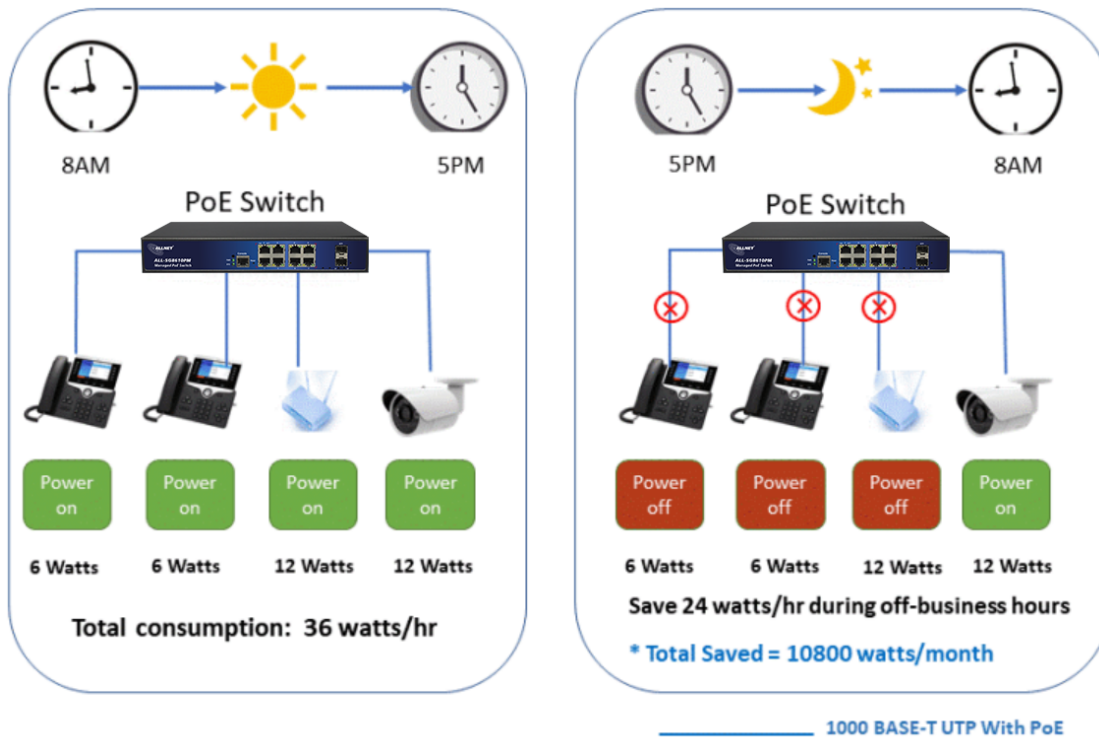
Smart PoE PD-Alive Check

ALL-SG8610PM managed PoE switch can be configured to monitor connected PD status in real time. Once the PD stops working and responding, ALL-SG8610PM will resume the PoE port power and bring the PD back to work. They will greatly enhance the network reliability through the PoE port resetting the PD's power source and reducing administrator management burden.



PoE Schedule Function for Energy Saving

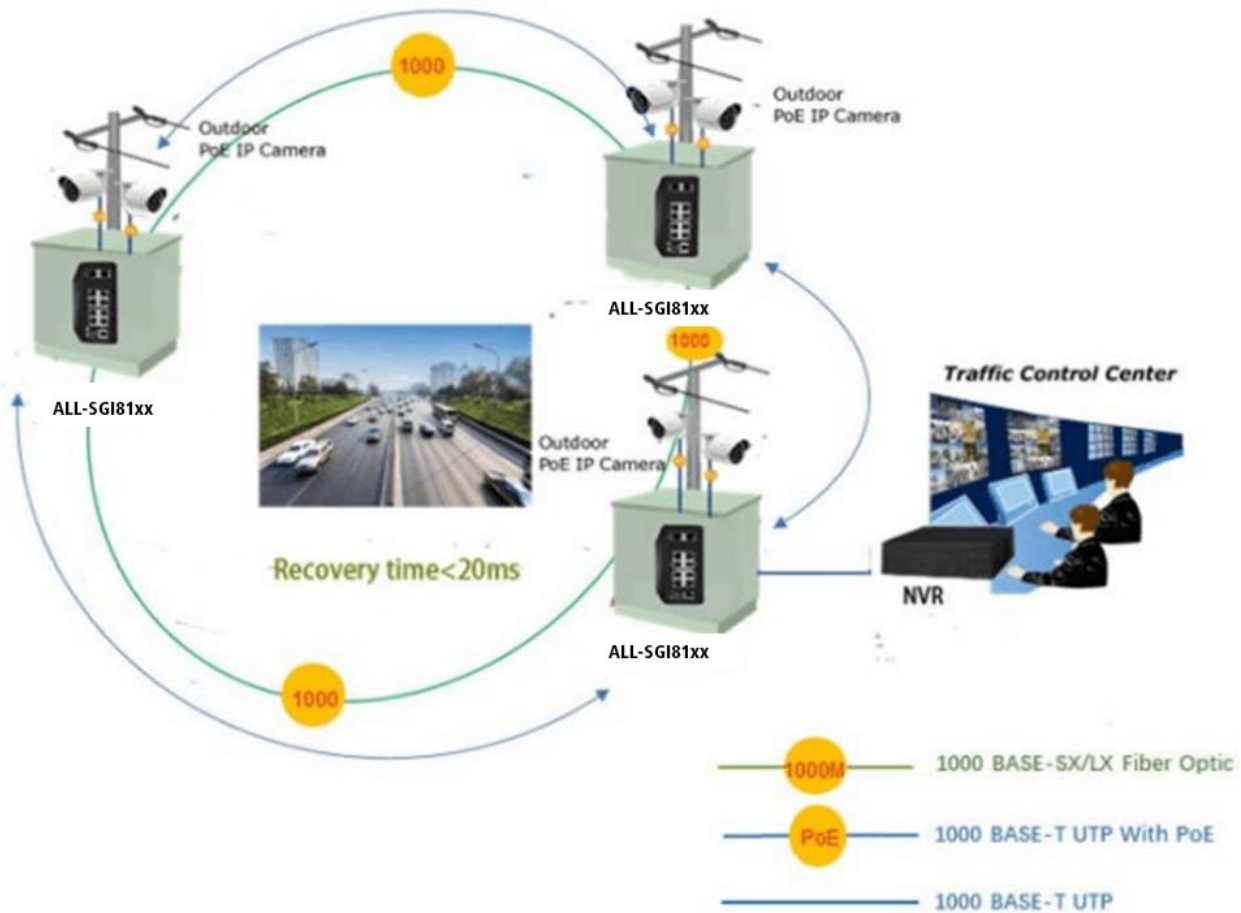
For environmental protection purpose, the ALL-SG8610PM switch Ethernet PoE can effectively control the power supply besides its capability of giving high watts power. The PoE schedule function helps to enable or disable PoE power feeding for each PoE port during specified time intervals and it is a powerful function to help SMBs or enterprises save power and money.



Scheduled PD Re-starting

The ALL-SG8610PM smart switch PoE allows each of the connected PoE IP cameras or PoE wireless access points to reboot at a specific time each week. Therefore, it will reduce the chance of IP camera or AP crash resulting from buffer overflow.

ERPS Ring for Video Transmission Redundancy



Strong Layer 2 Features

The ALL-SG8610PM layer 2 Ethernet switch can be programmed for advanced Layer 2 switch management functions such as dynamic port link aggregation, 802.1Q tagged VLAN, Q-in-Q VLAN, private VLAN, Multiple Spanning Tree Protocol (MSTP), QoS, bandwidth control, IGMP snooping and MLD snooping. Via the aggregation of supporting ports, the ALL-SG8610PM allows the operation of a high-speed trunk group that comes with multiple ports and supports fail-over as well.

Efficient and Various Management Methods

For efficient management, the ALL-SG8610PM is equipped with console, Web and SNMP management interfaces.

With the built-in Web-based management interface, it offers an easy-to-use, platform-independent management and configuration facility.

For text-based management, it can be accessed via Telnet and the console port.



For standard-based monitor and management software, it offers SNMPv3 connection which encrypts the packet content at each session for secure remote management.

Intelligent PoE Switch SFP DDM Function

The ALL-SG8610PM supports SFP-DDM (digital diagnostic monitor) function that greatly helps network administrator to easily monitor real-time parameters of the SFP transceivers, such as optical output power, optical input power, temperature, laser bias current, and transceiver supply voltage.

Technical Details:

| | |
|-----------------------|--|
| Model | ALL-SG8610PM |
| Copper Ports | 8-10/100/1000BASE-T RJ45 auto-MDI/MDI-X ports |
| Fiber Ports | 2x1G BASE-X SFP interfaces, supports 100M/1G Mbps dual mode |
| PoE Ports | 1~8-802.3af/802.3at PoE Injector Ports |
| Console Ports | 1 x RS-232-to-RJ45 serial port (115200, 8, N, 1) |
| Switch Architecture | Store-and-Forward |
| Switch Fabric | 20 Gbps/non-blocking |
| Throughput | 14.88Mpps @64 bytes |
| Address Table | 8K entries |
| Share Data Buffer | 4 Mb |
| Jumbo Frame | 9600 Bytes |
| SDRAM | 1Gb |
| Flash Memory | 128Mb |
| Flow Control | IEEE 802.3x pause frame for full-duplex Back pressure for half-duplex |
| Reset Button | >2 sec.: Factory default and reset |
| Power Supply | 100~240V AC, 50/60Hz, 4A (max.) |
| Power Consumption | Max.150 watts/1122 BTU |
| PoE Standards | IEEE 802.3af Power over Ethernet/PSE IEEE 802.3at Power over Ethernet Plus/PSE |
| PoE Power Supply Type | Per Port 52V DC, 300mA. Max. 15.4 watts (IEEE 802.3af) Per Port 52V DC, 600mA. Max. 30 watts (IEEE 802.3at) |
| PoE Budget | 130W |
| LED Indicators | Power: Green |



| | |
|-------------------------|--|
| | <p>Solid on- power work normal, off- power disconnected</p> <p>System: Green</p> <p>Blink -work normally, solid on- soft work abnormal, fast Blink – soft upgrade</p> <p>PoE: Yellow</p> <p>Solid on- PoE work normally, Off- PoE doesn't work, Blink - PoE overload</p> <p>10/100/1000T RJ45 Interfaces (Port 1 to Port 8): 1000 LNK/ACT (Green) Blink - port connected with data transmission; Solid on- port connected without data transmission</p> <p>100/1000Mbps SFP Interfaces (Port 9 to Port 10): Green</p> <p>Blink - port connected with data transmission; Solid on- port connected without data transmission</p> |
| EMC | <p>Surge Immunity:</p> <p>4KV Per: IEC61000-4-5</p> <p>ESD Protection:</p> <p>ESD Level 4 Per: IEC61000-4-2</p> <p>EFT Level 4 Per: IEC61000-4-4</p> |
| Layer2 Functions | |
| Port configuration | <p>Auto-negotiation Flow Control</p> <p>Port Mirror: TX/RX/BOTH; Many-to-1 monitor</p> <p>CPU Mirror</p> <p>Traffic statistics</p> |
| Link Aggregation | <p>Static link aggregation</p> <p>LACP(Dynamic Trunk/Static Trunk)</p> <p>Algorith based on Source/Destination MAC</p> <p>Algorithm based on Source/Destination IP</p> |
| MAC Table | <p>Aging Time</p> |

| | |
|-----------------|--|
| | Static MAC address Dynamic MAC address management |
| VLAN | 4094 Active VLANs 4094 VID 802.1Q Tag VLAN Port VLAN Protocol VLAN MAC VLAN Voice VLAN 802.1ad Q-in-Q tunneling Private VLAN (Protected port) GARP/GVRP |
| ACL | 256ACLs L2, L3 e L4 Time-based ACL IP ACL MAC ACL MAC-IP ACL User-Defined ACL ICMPv6 |
| Spanning tree | 802.1D Spanning Tree Protocol (STP) 802.1w Rapid Spanning Tree Protocol (RSTP) 802.1s Multiple Spanning Tree Protocol (MSTP) Loop Guard Root Guard TC-BPDU Guard BPDU Guard BPDU Filter |
| Ring Protection | <20ms G.8032 ERPS Ring |



| | |
|-------------------|---|
| Multicast | <p>Fast Ring</p> <p>256 groups</p> <p>IGMP v1/v2/v3 Snooping, Fast Leave</p> <p>MLD Snooping</p> <p>Multicast VLAN</p> <p>IGMP filter</p> <p>MVR</p> <p>Multicast Routing</p> |
| QOS | <p>8 mapping IDs to 8 level priority queues</p> <p>CoS port-based</p> <p>CoS 802.1p-based</p> <p>CoS DSCP-based</p> <p>Scheduling algorithms SP, WRR, SP+WRR</p> <p>Storm Control (Broadcast, Multicast, Unknown Unicast)</p> <p>Bandwidth control per port</p> <p>SWRR, DWRR for Scheduling</p> <p>Flow Redirect</p> <p>Precedence</p> <p>TOS</p> <p>Rate Limiting (Ingress/Egress)</p> <p>Stri Priority</p> |
| Security Features | <p>Port Security</p> <p>MAC address filter</p> <p>ARP Association (Manual, ARP scanning, DHCP snooping)</p> <p>ARP Protection</p> |



| | |
|----------------|--|
| | <p>AAA</p> <p>DAI</p> <p>DoS (Denial of Service)</p> <p>Classification of packages based on: End.MAC, IP End, TCP / UDP Ports, Protocol Type;</p> <p>802.1x Authentication (port-based e MAC-based)</p> <p>TACACS/TACACS+ Authentication</p> <p>RADIUS Authentication</p> <p>DHCP Filter</p> <p>Guest VLAN</p> <p>SSLv2/SSLv3/TLSv1</p> <p>SSHv1/SSHv2</p> <p>Restriction of WEB access based on: IP Address, And. MAC and Port;</p> <p>Port Isolation</p> <p>Loopback detection</p> |
| Management | <p>SNMP v1/v2c/v3 with Full Private MIBs</p> <p>RMON 4 groups</p> <p>WEB (HTTP/HTTPS)</p> <p>CLI (Telnet, Console, SSHv1/v2)</p> <p>Firmware upgrade via console/web/TFTP</p> <p>Configuration Backup/Reload</p> <p>Dual Firmware</p> <p>LLDP</p> <p>Configuration Export/Import</p> <p>CDP Aware</p> <p>OAM (IEEE802.3ah)</p> <p>CFM (IEEE802.1ag)</p> <p>sFlow</p> |
| Other Features | <p>DNS Client</p> |



| | |
|--------------------------|---|
| | <p>DHCP Relay DHCP Client DHCP Snooping DHCP Option 66 DHCP Option 67 DHCP Option 82 NTP/SNTP Client</p> <p>UPNP</p> <p>UDLD</p> |
| PoE management | <p>Total PoE power budget control</p> <p>Per port PoE function enable/disable PoE admin-mode control</p> <p>PoE port power feeding priority Per PoE port power limitation</p> <p>PD classification detection</p> <p>PD alive check PoE schedule</p> <p>Soft-reboot PoE Non-stop</p> |
| Maintenance | <p>Cable Diagnostics</p> <p>Ping</p> <p>SFP DDM (Digital Diagnostics Monitoring)</p> <p>Thermal protection</p> <p>System log (Local and Remote)</p> <p>Memory and CPU Monitoring</p> |
| Layer 3 functions | |
| Static Routing | <p>IPv4 Unicast: Static Routing(Software Base)</p> <p>IPv6 Unicast: Static Routing(Software Base)</p> |
| IPV6 | <p>IPv6 neighbor discovery (ND)</p> <p>Path maximum transmission unit (MTU) discovery Internet Control Message Protocol (ICMP) version 6</p> <p>TCPv6/UDPv6</p> <p>Ping6</p> |



| | |
|---------------------|--|
| | Telnet(v6) Http/Https Interface IPV6 ACL IPV6 |
| Dimension | 280x213x44.5mm |
| Weight | 2 kg |
| Working Temperature | -10°C to 45°C |
| Storage Temperature | -20°C to 70°C |
| MTBF | 50,000hrs |

Attributes

| Attribute | Value |
|-----------------------|--------------|
| Anzahl Ports PoE/LAN: | 8/0 |
| Belüftung Switch: | Lüfterlos |
| Einsatzort Switch: | 19" |
| LAN Geschwindigkeit: | 1Gbit/s |
| Management: | full managed |
| PoE Budget: | <200 Watt |
| PoE Port Leistung: | 30W at |
| SFP Geschwindigkeit: | SFP 1GBit |
| Weight: | 2 Kg |
| Warranty: | 24.00 Months |

Accessories

| Part No. | Name |
|----------|--|
| 27947 | ALLNET ALL4750 / Switch module SFP (mini Gbic), 1000Mbit, SX |
| 128033 | ALLNET Switch Modul ALL4750-INDU SFP(Mini-GBIC), 1000Mbit MM |
| 59426 | ALLNET ALL4751 / Switch module, GBIC mini module, 1000Mbit, |
| 128034 | ALLNET Switch Module ALL4751-INDU SFP(Mini-GBIC), 1000Mbit, |

| Part No. | Name |
|----------|--|
| 114334 | ALLNET Switch Modul ALL4752 SFP(mini Gbic), 1000Mbit, LHX/LC |
| 166757 | ALLNET Switch Modul ALL4752-INDU SFP(Mini-GBIC), 1000Mbit, LX/LC, 20KM, Industrial, -40/+85 Grad, |
| 59391 | ALLNET ALL4753 / Switch module GBIC Mini module, 1000Mbit, L |
| 59393 | ALLNET ALL4755 / Switch module SFP (mini Gbic), 1000Mbit, ZX |
| 143548 | ALLNET Switch Module ALL4756 SFP(Mini-GBIC), 1000Mbit, ZX/LC |
| 136828 | ALLNET Switch Module ALL4761 SFP(Mini-GBIC), 1000Mbit |
| 193149 | ALLNET Switch Modul ALL4761-INDU SFP(Mini-GBIC), 1000Mbit, WDM(Bidi)/LC, Tx1310nm/Rx1490nm, 9u, 20Km, Industrial -40/+85 Grad, |
| 136829 | ALLNET Switch Module ALL4762 SFP(Mini-GBIC), 1000Mbit |
| 193150 | ALLNET Switch Modul ALL4762-INDU SFP(Mini-GBIC), 1000Mbit, WDM(Bidi)/LC, Tx1490nm/Rx1310nm, 9u, 20Km, Industrial -40/+85 Grad, |
| 140675 | ALLNET Switch Module ALL4765 SFP(Mini-GBIC), 1000Mbit |
| 208404 | ALLNET Switch Modul ALL4765-INDU SFP(Mini-GBIC), 1000Mbit, RJ45(TP), Industrial -40/+85 Grad, |
| 212816 | ALLNET Switch smart managed 6 Port Gigabit 95W / 4x PoE / 1x Gigabit / 1x PoE 90W BT In / "ALL-SG8206PDM" |
| 112532 | ALLNET ALL-SG8205PD / unmanaged 5 Port Gigabit Switch, 2x Gi |
| 118887 | ALLNET ALL-SG8208PD / unmanaged 8 Port Giga Switch, 4x PoE |
| 222870 | ALLNET Switch unmanaged 5 Port - 5x GbE - PoE Budget 85W - 1x bt out, 3x PoE af/at out, 1xPoE bt 90W in - Fanless, DIN, PD-Input - ALL-SG8005PD-BT90 |
| 222870 | ALLNET Switch unmanaged 5 Port - 5x GbE - PoE Budget 85W - 1x bt out, 3x PoE af/at out, 1xPoE bt 90W in - Fanless, DIN, PD-Input - ALL-SG8005PD-BT90 |
| 99305 | ALLNET / ALL95100 TP Cat 6 / PoE Surge arrester |
| 105684 | ALLNET ALL95112 / 12Port Overvoltage protection TP/ALL-IP |
| 115128 | ALLNET / ALL95101 TP Cat 6 / ADSL / VDSL / ISDN Surge protec |
| 198028 | ALLNET TP Cat 6 Überspannungs-/Blitzschutz Surge Protector A |
| 141254 | Netzkabel 230V Schutzkontakt CEE7(Stecker)->Kaltgeräte IEC-C13(Buchse), 2m,Black IEC Lock |
| 141255 | Netzkabel 230V Schutzkontakt CEE7(Stecker)->Kaltgeräte IEC-C13(Buchse), 1m,Black IEC Lock |
| 141256 | Netzkabel 230V Schutzkontakt CEE7(Stecker)->Kaltgeräte IEC-C13(Buchse), 3m,Black IEC Lock |
| 137775 | ALLNET USV 600VA Line-Interactive, USB, LCD-Display |
| 137779 | ALLNET USV 1000VA Line-Interactive, USB, LCD-Display |

| Part No. | Name |
|----------|---|
| 137780 | ALLNET USV 1500VA Line-Interactive, USB, LCD-Display |
| 137781 | ALLNET USV 2000VA Line-Interactive, USB, LCD-Display |
| 137901 | ALLNET USV 1000VA Line-Interactive, USB/RS232, LCD-Display, 19"/Tower, |
| 137902 | ALLNET USV 1500VA Line-Interactive, USB/RS232, LCD-Display, 19"/Tower, |
| 137903 | ALLNET USV 2000VA Line-Interactive, USB/RS232, LCD-Display, 19"/Tower, |
| 137904 | ALLNET USV 3000VA Line-Interactive, USB/RS232, LCD-Display, 19"/Tower, |
| 76117 | Patchkabel RJ45, CAT6 250Mhz, 0,25m grau, S-STP(S/FTP), LSZH, Synergy 21, |
| 76124 | Patchkabel RJ45, CAT6 250Mhz, 0,5m grau, S-STP(S/FTP), LSZH, Synergy 21, |
| 76133 | Patchkabel RJ45, CAT6 250Mhz, 1,0m grau, S-STP(S/FTP), LSZH, Synergy 21, |
| 76142 | Patchkabel RJ45, CAT6 250Mhz, 1,5m grau, S-STP(S/FTP), LSZH, Synergy 21, |
| 76151 | Patchkabel RJ45, CAT6 250Mhz, 2m grau, S-STP(S/FTP), LSZH, Synergy 21, |
| 76160 | Patchkabel RJ45, CAT6 250Mhz, 3m grau, S-STP(S/FTP), LSZH, Synergy 21, |
| 76169 | Patchkabel RJ45, CAT6 250Mhz, 5m grau, S-STP(S/FTP), LSZH, Synergy 21, |
| 76178 | Patchkabel RJ45, CAT6 250Mhz, 7,5m grau, S-STP(S/FTP), LSZH, Synergy 21, |
| 136637 | Patchkabel RJ45, CAT6 250Mhz, 0,15m grau, S-STP(S/FTP), LSZH, Synergy 21, |
| 234698 | ALLNET Switch full managed Layer2+ zbh. Replacement bracket for ALL-SG8610 8 port |

[Click here to discover more items from this category in our shop.](#)