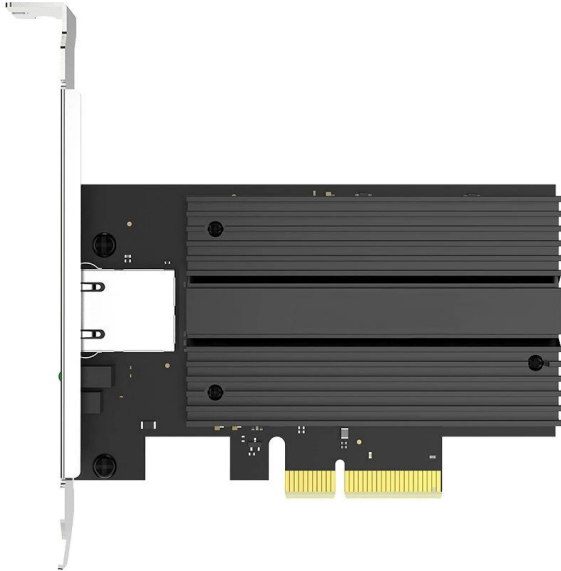


ALLNET PCIe 10G X4 10G/5G/2,5G/1GBit Single Port PCIe LAN Ca



EAN CODE



ALL0138v2-1-10G-TX is a PCI Express x4 single-port 10 Gigabit Ethernet network adapter is based on the Aquantia AQtion AQC107 chip solution. It is also compatible with PCIe x8 and x16 channels. A high-performance, five-rate NIC adapter that integrates PCIe, MAC, and PHY to provide power and space-efficient connectivity to client systems. The PCIe x4 universal interface gives this product great flexibility. The integrated PHY can be routed through Cat 6a at speeds up to 10 Gbps over a distance of 100 meters. It also supports 5 Gbps network connections over traditional Cat 5e or Cat 6 cabling.

The ALL0138v2-1-10G-TX is IEEE 802.3an & IEEE 802.3bz compliant and enables 2.5GBASE-T, 5GBASE-T, 10GBASE-T, 1000BASE-T and 100BASE-TX transmission over 100m twisted pair cabling.

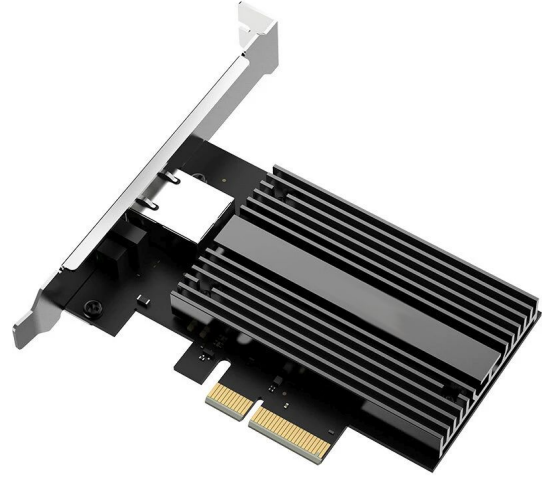
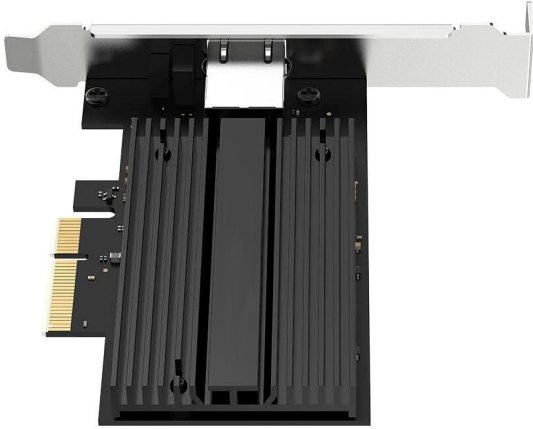
Technical Details:

Hardware Specification	AQUANTIA-AQC107
Hardware Bus Type	PCI Express 3.0 8.0 GT/s
Bus Type	PCIE-X4
Physical Interface	IEEE802.3u 100BASETX, IEEE802.3ab 1000BASEF, IEEE802.3an 10GBASETT, IEEE802.IQ VLANs, IEEE802.3x FlowControl, IEEE802.Ip Priority Queuing, IEEE 802.3azEEE
Indicators	LED, 1-10G speed LED(Amber)

Network Port Type	10G RJ45
Full/half Duplex	Self-adaptive
Power consumption	10Gbps-5.3W
Network Environment	10G Ethernet
Suits For	PCI Express enabled PC, and with available PCI Express x4 slot
	Gen2.0 or higher (x8, x16)
Support OS	Windows®7, 8.x, 10
	Windows Server®2008R2, 2012, 2016
	Linux 2.6.x to 4.x
Working Environment	Environment humidity: 20-80%RH
	Working temperature:5° C~50° C
	Storage temperature:-25° C~70° C
Dimension	95x64x20mm (measured manually with slight deviation)
Package Content	1x ALL0138v2-1-10G-TX Network Card 1x User guide 1x Screw 1x Case baffle

Additional Images





Accessories

Part No.	Name
----------	------
