

## ALLNET MSR Central "ALL5000v2" incl. 16 Sensor Ports & 19" for IP Building Automation



### EAN CODE



## The new central unit for your building control system

### Highlights:

- 16x I2C sensor ports for maximum expansion.
- max. 128x possible sensors via ALL4404 multiplexing hub.
- Linux based opensource operating system
- 1x USB front port for optional USB dongles
- Two-line LCD display for status and IP address indication
- Redundant 12VDC input with "Widget" display in Webgui

The ALLNET ALL5000v2 IP Facility Control Server is the new flagship of the ALLNET home automation series. It offers all the features of the other MSR control centers, which is the consistent further development of the popular ALLNET MSR Ethernet sensor meter. During the development of the control server, the wishes of existing MSR users were taken into account and a large number of new features and interfaces were added without sacrificing the familiar functions. Also new is the expandability of the devices.

The ALLNET ALL5000v2 IP Facility Control Server automates all tasks in building control, such as detection and signaling of environmental conditions such as temperature, humidity, pressure and much more, as well as triggering switching operations via contacts, relays and the like. This can be done manually, time-controlled or depending on recorded values.

A wide variety of scenarios such as lighting, blinds, ventilation and household appliances can be controlled with the ALLNET ALL5000v2 IP Facility Control Server. From temperature detection and demand-based heating of individual rooms, control of garden irrigation, alarming in case of gas smell and water intrusion to automatic



opening and closing of blinds depending on daylight and much more, there are no limits to your ideas.

### Accessible everywhere via network, internet and smartphone

You control everything from a PC, notebook or other mobile device, such as smartphone or webpad. No matter if the devices you want to control, measure, regulate are located in the same building or on another continent. The ALLNET ALL5000v2 is accessible via an IP address. Your existing computer network and the Internet serve as the medium. The determined values can be retrieved directly from the device via the web browser or sent periodically via email or when a value exceeds or falls below certain preset limits. An integrated JSON interface is used to retrieve data externally via the Internet.

### Individually adapted to every need

The ALLNET ALL5000v2 IP Facility Control Server has a Linux-based opensource operating system. Thus it offers enough freedom for own developments and adaptations of the software directly to the intended use of the user.

### Would you like a little more? The new interface diversity

The ALLNET ALL5000v2 IP Facility Control Server leaves nothing to be desired and even tops the ALLNET ALL3505 Sensoric Appliance. There are 16 sensor ports (RJ45) for the connection of sensors, actuators, relays, etc. available. There is also 1x USB port available, which can be used to connect USB memory sticks or a Plugwise USB adapter to control and query Plugwise/Zigbee wireless sockets.

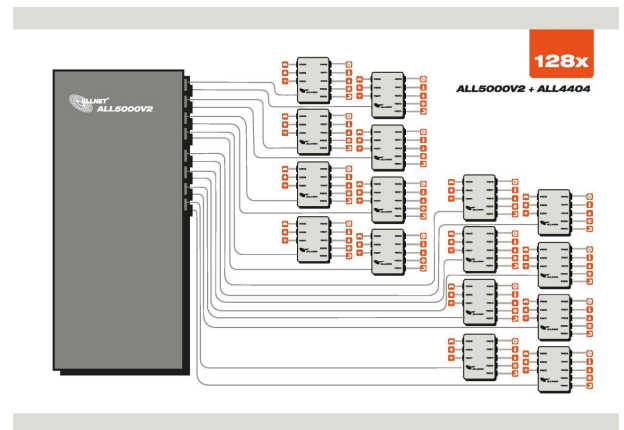
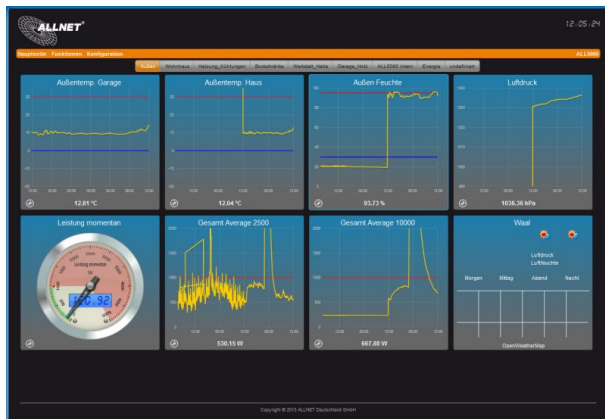
The two-line LCD display integrated into the housing shows you the status and the IP address.

### Technical Details:

Element	Specification
Product:	ALLNET ALL5000v2 IP Facility Control Server
Module ports for measuring and switching modules:	16x RJ45
Interfaces:	1x USB 2.0 extern 1x USB 2.0 intern 1x Temperatursensor onboard
Network connection:	1x RJ45 10/100Mbps
Power Supply:	<ul style="list-style-type: none"><li>• 100~240 VAC, 50/60 Hz, internal power supply unit</li><li>• optional redundant 12VDC power input</li></ul>
Power consumption:	<3 Watt (without additional modules)
Housing:	19" metal housing (1U)
Environment:	Temperature operation: 5 ~ 40 °C Operating humidity: 10% ~ 85% (non-condensing) Storage temperature: -20 ~ 60 °C Storage humidity: 5% ~ 90% (non-condensing)
Marks:	CE, RoHS

Dimensions:	440 x 230 x 44 mm (width x depth x height)
Package contents:	<ul style="list-style-type: none"> <li>• 1 piece ALLNET ALL5000v2</li> <li>• 1 piece ALLNET ALL3008 temperature sensor</li> <li>• 1 manual</li> <li>• Power cable</li> </ul>

## Additional Images



## Accessories

Part No.	Name
207613	ALLNET Netzwerk NTP GPS Server ALL-NTP-101
28197	ALLNET ALL3003 / switching output (1 optoelectroniccoupler,
134721	ALLNET MSR Sensor ALL3008 / Temperature sensor
124089	ALLNET MSR Sensor ALL3016 / Temperature sensor waterproof
157798	ALLNET ALL3020 / Sensor for humidity and temperature
33501	ALLNET ALL3024 / 220-240V voltage meter
98831	ALLNET ALL4432 / analog brightness sensor in metal case
34417	ALLNET ALL3036 / Liquid level monitor vertical
34418	ALLNET ALL3037 / Liquid level monitor
36788	ALLNET ALL3051 / PIR motion detector



Part No.	Name
60987	ALLNET ALL4006 / DIN RAIL temperatur sensor 27mm
61959	ALLNET ALL4020 / DIN RAIL Reed-Relais (1 reed contact, isola
60991	ALLNET ALL4024 / DIN RAIL volt meter 220-240V 1phase
61953	ALLNET ALL4025 / DIN RAIL counter
61953	ALLNET ALL4025 / DIN RAIL counter
98828	ALLNET ALL4429 / temperature/humidity/pressure Sensor in met
113075	ALLNET ALL4421 / DC voltmeter *white*
98838	ALLNET ALL4444 / volt meter 220-240V 4relais in metal case
61958	ALLNET ALL4054 / DIN RAIL shock sensor
62422	ALLNET ALL4056 / DIN RAIL noise sensor, 27mm width
88283	ALLNET ALL4506 / Temperature Sensor (Multiplexing)
98825	ALLNET ALL4427 / Relais output 4 Port 250V / 10A in metal ca
88282	ALLNET ALL4524 / volt meter 220-240V AC
98836	ALLNET ALL4442 / contact input 4-port in metal case
98828	ALLNET ALL4429 / temperature/humidity/pressure Sensor in met
98840	ALLNET ALL4452 / PIR movement detector
98820	ALLNET ALL4404 / Multiplexing Modul-Hub 8-fach
98821	ALLNET ALL4406 / temperature sensor in metal case
101321	ALLNET ALL4406 / temperature sensor in metal case *white*
157801	ALLNET ALL4420 / Combi sensor humidity/temp. in housing
98824	ALLNET ALL4425 / counter in metal case
101320	ALLNET ALL4425 / Contact Counter / S0 in the housing *white*
98825	ALLNET ALL4427 / Relais output 4 Port 250V / 10A in metal ca
98828	ALLNET ALL4429 / temperature/humidity/pressure Sensor in met
98831	ALLNET ALL4432 / analog brightness sensor in metal case
98836	ALLNET ALL4442 / contact input 4-port in metal case
98838	ALLNET ALL4444 / volt meter 220-240V 4relais in metal case
98840	ALLNET ALL4452 / PIR movement detector
96689	ALLNET ALL4454 / Smoke/gas sensor in metal case
37038	ALLNET ALL3088 / IP-Symcon Basic Software for ALL3000/ALL400
96687	ALLNET ALL3089 / IP-Symcon Prof. Software (Licence)
174036	ALLNET MSR ALL3073V2WLAN



Part No.: 206211  
Vendor Part No.: ALL5000v2

Part No.	Name
104248	ALLNET ALL3075v4 / Wireless socket, switchable via IP with P
172091	ALLNET ALL4175v2 / Network relay 4-fold 220V/10A
131841	ALLNET MSR IO Central Switching Power Strip 6-way ALL4176