

HDMI over IP Extender

VE8900T / VE8900R

4K HDMI over IP Extender

VE8950T / VE8950R

- The ATEN VE8900/VE8950 Video over IP Extenders deliver visually lossless 1080p / 4K AV signals with low latency over long distance via a local network of standard Gigabit network switch.

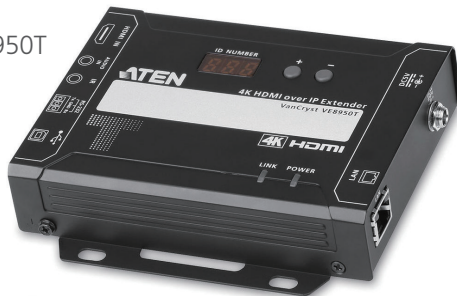
The VE8900/VE8950 provides an effective, easy-to-use, and economical digital signage solution with the following features and advantages that directly address the challenges system integrators encounter when implementing AV over IP systems:

- Limitless scalability and flexibility
- No complicated IP setup
- No additional server PCs or software required
- Go further for less with daisy chaining

Engineered to meet today's demands of large scale, multi-display, 1080p / 4K signal transmission, and designed to be easy to set up and operate, the VE8900/VE8950 Video over IP Extender is an ideal product for a wide range of environments, such as trade shows, airports, university campuses, conference centers, and shopping centers.



VE8950T



VE8950R

Transmitter



Receiver



Features

Lightweight Compression with Ultra-low Latency

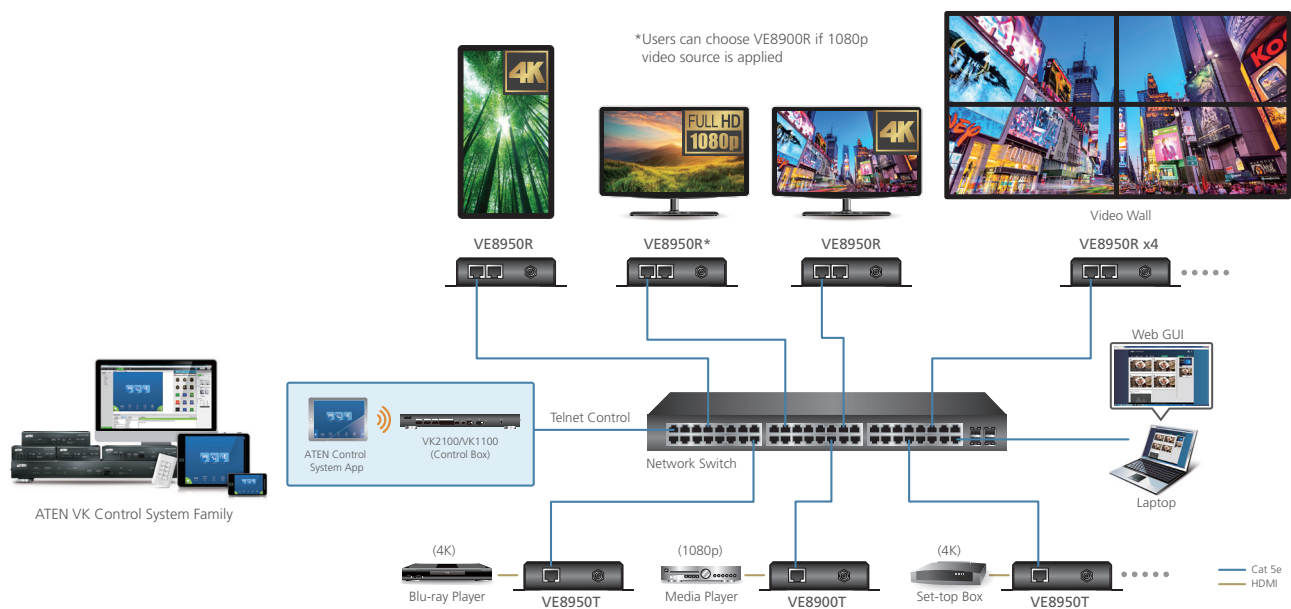
- Delivers visually lossless high-quality video up to 1080p @ 60 Hz (VE8900) / 4K @ 30 Hz 4:4:4 (VE8950)
- Ensures stunning quality video using ATEN advanced video lossless compression technology
- EDID Expert™ selects the optimum EDID settings for smooth power-up, high-quality display and the best video resolution across different screens
- Offers different levels of video compression rate including Smooth, Balance, and High Quality for users to choose depending on practical usage

Limitless Scalability and Flexibility

- Extends AV connections from a simple point-to-point to a multi-point to multi-point setup via LAN without distance limitations
- Offers multi-functionality in extender, splitter, matrix switch, video wall and daisy chain applications
- Mix and match the latest 4K displays and 1080p screens. The built-in scaler automatically scales up incoming video signal to match the maximum resolution of the connected display devices*

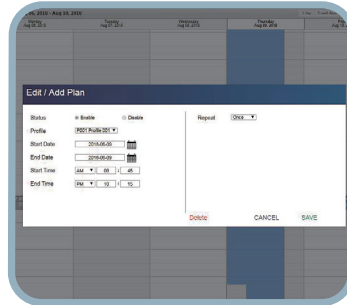
Collaboration with ATEN Control System

- Integrated solution – Compatible with ATEN Control System, allowing users to directly operate VE8900/8950 via CLI Telnet or RS-232 protocol
- Effortless operation – One click to effectively operate VE Manager, TV, projector, source player, and related equipments via touch panel and keypad



Spontaneous Scheduling Management

- Offers a user-friendly scheduling management function for users to pre-plan the display schedule
- Provides robust and intuitive scheduling management options to help users to manage all events in the calendar to as detailed as to setting events to minute intervals
- Integrates all VE89 units to arrange the profile by grouping individual receiver or video wall
- Multiple profiles can be arranged to play in any order over a selected period of time



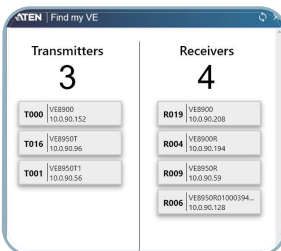
No Complicated IP Setup

- Simple configuration that requires no extensive IT experience or extra learning
- Effortlessly switches among input sources via top panel pushbuttons

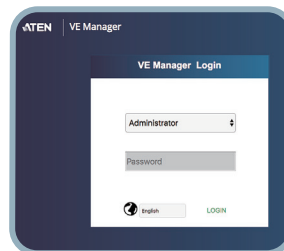


Web GUI-Based Management, No Additional Server PCs or Software Required

- Simple Access – Without typing IP address on Chrome browser, users are allowed to directly link to VE Manager via one click on “Find My VE” Chrome based free tool



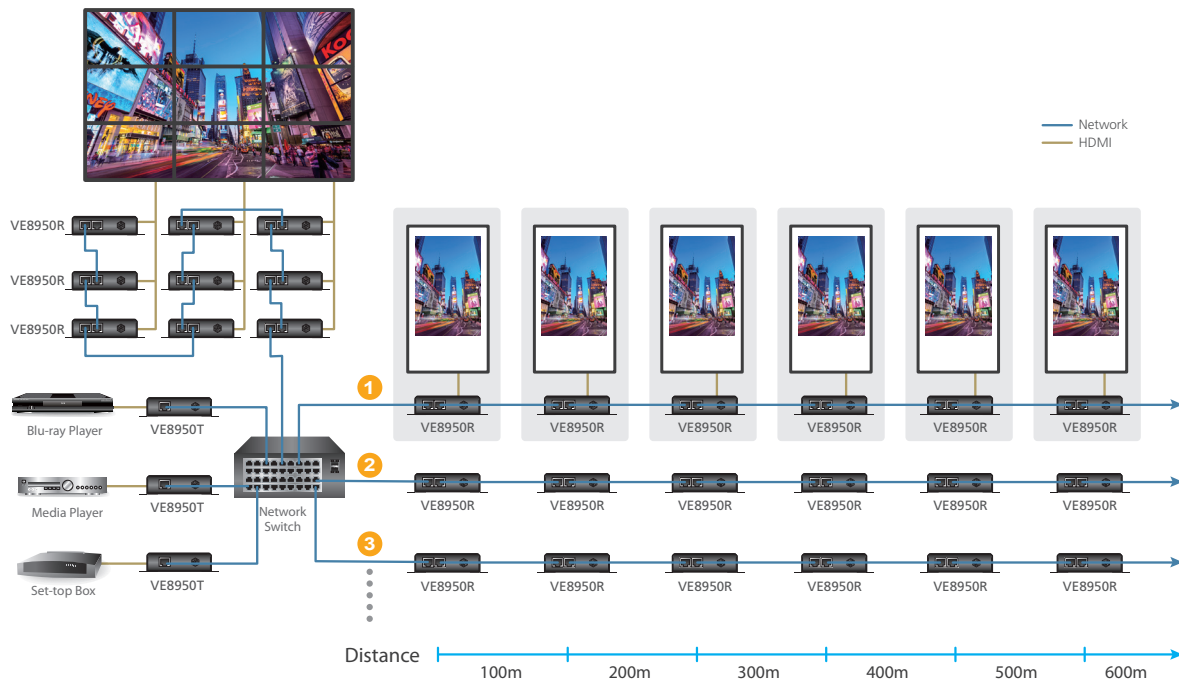
Click any transmitter to log in



Go Further For Less with Daisy Chaining*

- Connects multiple displays through a single port to utilize every port of the network switch and maximize their value
- Easily expandable – cabling and system deployment is easy with no huge network switches and fewer cables needed
- Perfect for large-scale deployment covering hundreds of meters, such as hotel facilities, airports, university campuses, stations, shopping malls, and exhibition centers

*Depending on your network architecture, we recommend daisy chaining up to 30 units. Please contact ATEN representatives for more details.



Use daisy chains to configure a video wall or expand the AV system hundreds of meters

Video Wall Support

- Supports up to 8 x 8 video wall (64 displays)*
- Supports horizontal or vertical (90° and 270° rotation) display orientation
- Easily switches layout profiles, preview and drag-and-drop video sources via the intuitive web GUI

*Depends on your network architecture, please contact ATEN representatives for more details.

Embedded / De-embedded Audio Support

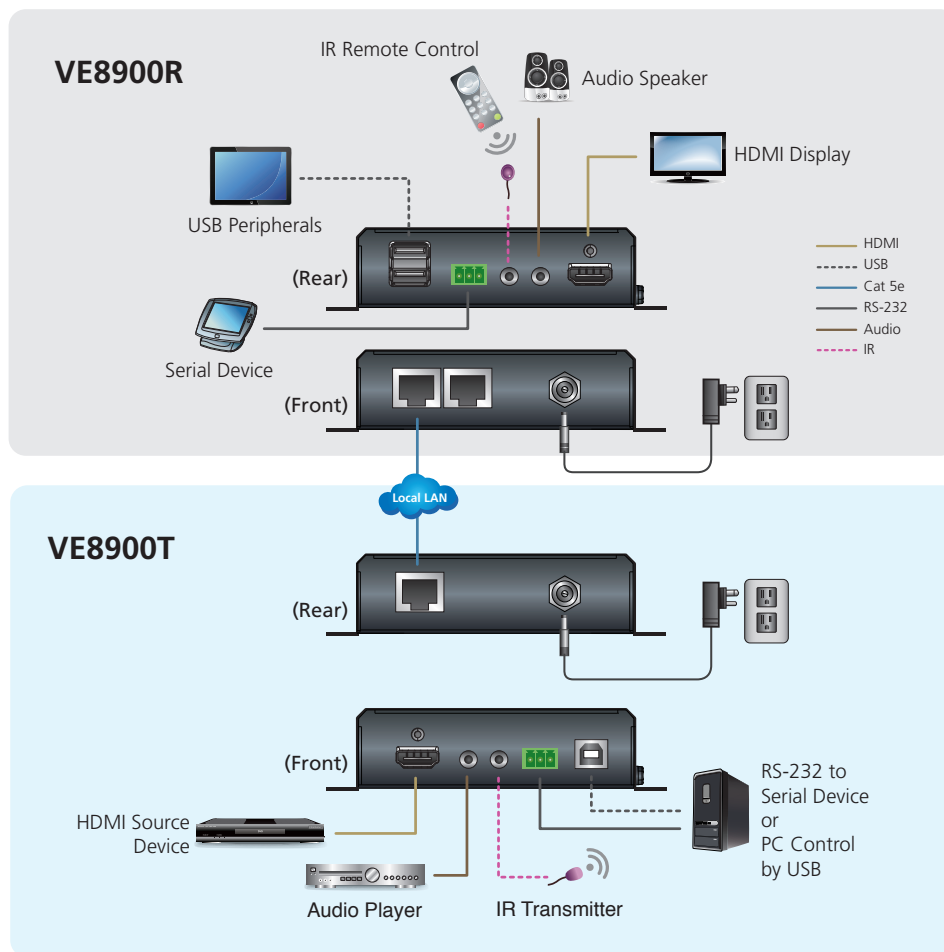
- For VE8900T/8950T – separate audio signal can be embedded into the HDMI stream
- For VE8900R/8950R – audio stream can be extracted from the HDMI stream and delivered as a separate audio signal

Multiple Control Channels

- Multiple control methods – the system can be managed via Ethernet or top-panel pushbuttons
- USB Connectivity – USB port (USB 2.0) allows for connection of devices such as keyboard, mouse, flash drive, printer, and other USB peripherals*
- Bi-directional IR Channel – IR transmission is processed one way at a time
- RS-232 Channel – bi-directional RS-232 serial port allows for connection of peripherals such as touch screens and bar code scanners

Note: Each VE8900/8950 transmitter can be controlled by a total of 4 USB touch screens installed to VE8900/8950 receivers.

Installation Diagram



VE8900 / VE8950 Control App

Turn your mobile phone into a remote control for VE8900 / VE8950

The VE8900 / 8950 Control App is a free app that supports iOS and Android operating systems.

This mobile app provides intuitive operation with direct access to VE Manager anytime, anywhere to make networked AV even easier than before.



Android

iOS

Features

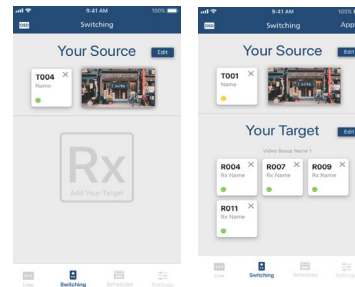
Preview

Review video sources before switching.



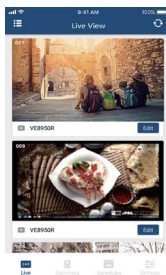
Control

Switch a source to multiple receivers instantly.



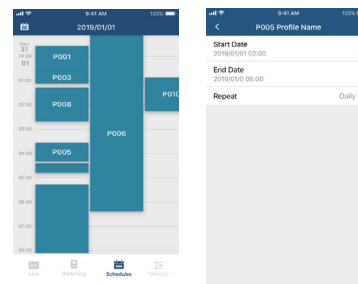
Monitor

Check the status of receivers and all your digital signage content.



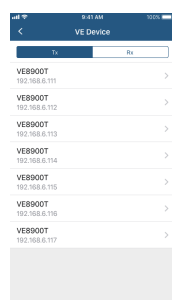
Calendar-based Scheduling

Check and revise the display schedule on the go.



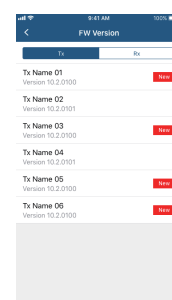
Simple Login

Auto search for devices and tap any transmitter to log in.



Firmware Update Reminder

Keeps you posted about the latest updates



Specifications

Functions	VE8900R	VE8950R	VE8900T	VE8950T
Video Input				
Interfaces	N/A		1 x HDMI Type A Female (Black)	
Impedance	N/A		100 Ω	
Max. Distance	N/A		1.8 m	
Video Output				
Interfaces	1 x HDMI Type A Female (Black)		N/A	
Impedance	100 Ω		N/A	
Video				
Max. Data Rate	Average: 150 ~ 500Mbps		Average: 150 ~ 500Mbps	
Compliance	HDMI HDCP Compatible	HDMI (4K) HDCP Compatible	HDMI HDCP Compatible	HDMI (4K) HDCP Compatible
Max. Resolutions / Distance	Up to 1080p@100m (Cat 5e/6, point to point)	Up to 4K@100m (Cat 5e/6, point to point) *4K supported: 4096 x 2160 / 3840 x 2160 @ 30Hz (4:4:4)	Up to 1080p@100m (Cat 5e/6, point to point)	Up to 4K@100m (Cat 5e/6, point to point) *4K supported: 4096 x 2160 / 3840 x 2160 @ 60Hz (4:2:0) 4096 x 2160 / 3840 x 2160 @ 30Hz (4:4:4)
Audio				
Input	N/A		1 x HDMI Type A Female (Black) 1 x Mini Stereo Jack Female (Green)	
Output	1 x HDMI Type A Female (Black) 1 x Mini Stereo Jack Female (Green)		N/A	
Connectors				
Unit to Unit	2 x RJ45 Female		1 x RJ45 Female	
Control				
IR	1 x Mini Stereo Jack Female (Black)		1 x Mini Stereo Jack Female (Black)	
RS-232	Connector: 1 x Terminal Block, 3 pole Baud Rate: 19200, Data Bits:8, Stop Bits:1, no parity and flow control		Connector: 1 x Terminal Block, 3 pole Baud Rate: 19200, Data Bits:8, Stop Bits:1, no parity and flow control	
USB	2 x USB Type A Female (Black)		1 x USB Type B Female (White)	
Connectors				
Power	1 x DC Jack (Black) with locking		1 x DC Jack (Black) with locking	
Power Consumption	DC5V: 4.28W (without USB peripheral device loading)	DC5V: 4.53W (without USB peripheral device loading)	DC5V: 3.07W	DC5V: 3.08W
Environmental				
Operating Temperature	0 - 40° C		0 - 40° C	
Storage Temperature	-20 - 60° C		-2 - 60° C	
Humidity	0 - 80% RH, Non-Condensing		0 - 80% RH, Non-Condensing	
Physical Properties				
Housing	Metal		Metal	
Weight	0.49 kg		0.50 kg	
Dimensions (L x W x H) with bracket	14.02 x 12.30 x 3.06 cm		14.02 x 12.30 x 3.06 cm	
Dimensions (L x W x H) without bracket	13.60 x 10.10 x 2.96 cm		13.60 x 10.10 x 2.96 cm	

Note: Supports 1920x1200@60Hz reduced blanking (ATEN Default EDID only)

Product information is subject to change without prior notice.

ATEN International Co., Ltd.

3F., No.125, Sec. 2, Datong Rd., Sijhih District., New Taipei City 221, Taiwan
 Phone: 886-2-8692-6789 Fax: 886-2-8692-6767
 www.aten.com E-mail: marketing@aten.com

Publish Date: 07/2019 V3.0



© Copyright 2019 ATEN® International Co., Ltd.
 ATEN and the ATEN logo are trademarks of ATEN International Co., Ltd.
 All rights reserved. All other trademarks are the property of their respective owners.