

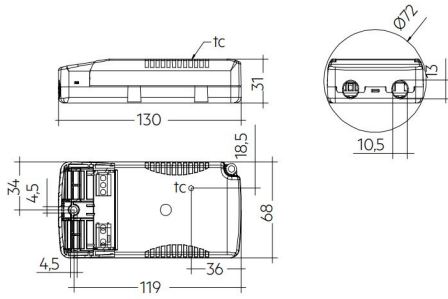
## Synergy 21 LED light panel 620\*620 or 300\*1200 with standard power supply 45W Tridonic TRIAC dim



For LED panel 620\*620 V2 and V3 or 300\*1200 with 1050mA  
Manufacturer: Tridonic, LCA 45W 700 or 1050mA flexC PH-C SR ADV  
TRIAC DIM see data sheet

Input: 220-240VAC  
Output: 1050mA, 28-42V DC , 45 Watt constant current  
Operating temperature: -20°C to +50°C, see data sheet  
Aluminium housing IP20  
LxWxH 130x68x31mm  
Protection labelling: see data sheet

## Additional Images



## Accessories

Part No.	Name
79113	Synergy 21 LED light panel zub. Power Supply Connector
80947	Wago Serie 222 - 5*4mm (40 Stück)
120373	Wago Serie 221 - 2*4mm (100 Stück)
120374	Wago Serie 221 - 3*4mm (50 Stück)
120375	Wago Serie 221 - 5*4mm (25 Stück)
167273	Mean Well power supply - CC Driver 700mA ~286V 0-10V dimm
167274	Mean Well power supply - CC Driver 700mA ~357V 0-10V dimm
167275	Mean Well power supply - CC Driver 700mA ~428V 0-10V dimm
147265	Netzkabel 230V Schutzkontakt CEE7(Stecker)->Open End mit Adernendhülsen, 1,8m,Black
183328	Synergy 21 Netzteil - DALI to Triac Dimmer *Tridonic*