



## Sierra Wireless AirLink® Antenna: 3-in-1 SharkFin Wi-Fi

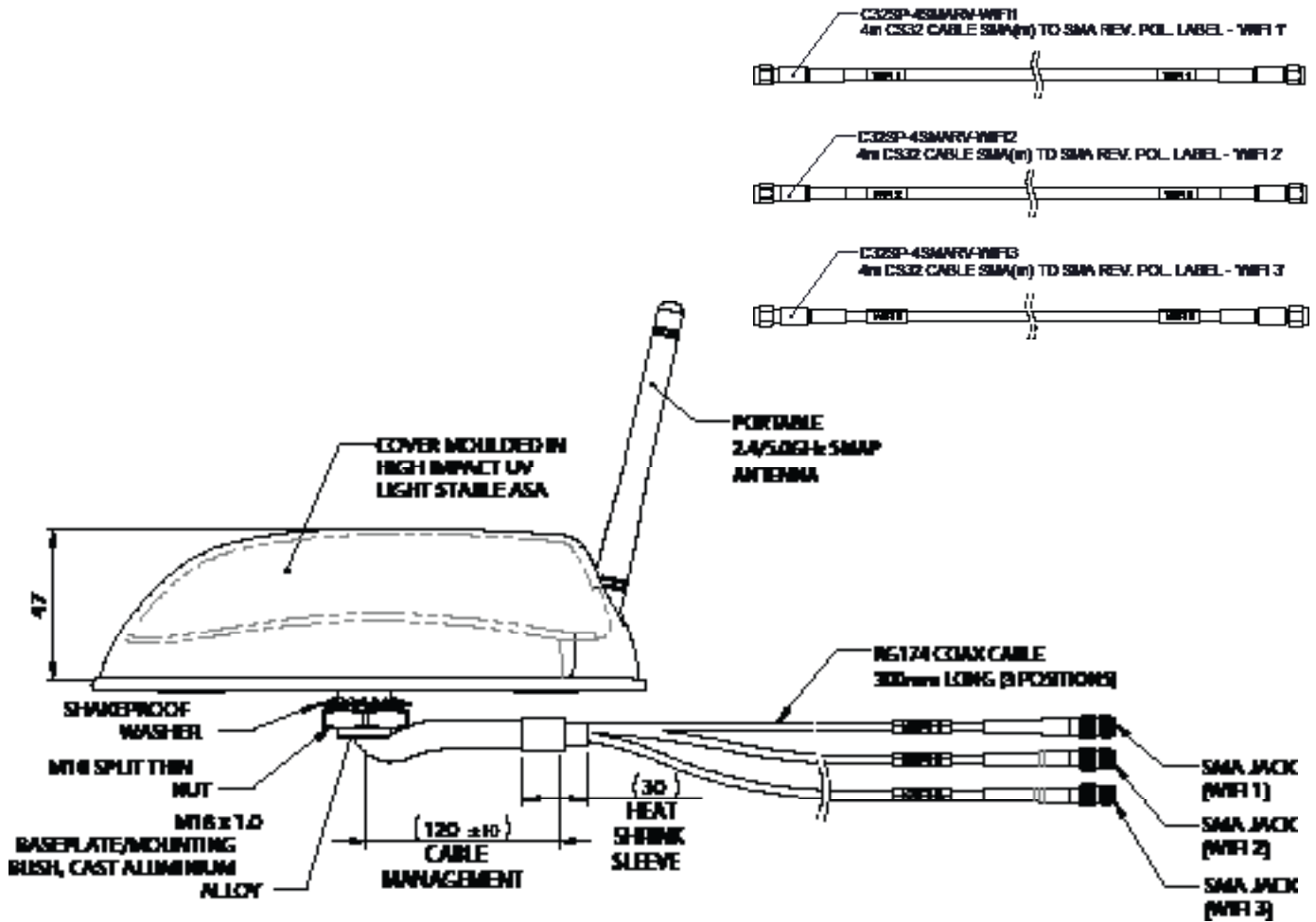
### AirLink® Antenna: 3-in-1 SharkFin Wi-Fi

Tested and certified to operate with AirLink routers and gateways, the 3-in-1 SharkFin Wi-Fi has a compact OEM style housing and offers dual-band 3x3 MiMo function for dual band Wi-Fi, with 2 internal antennas and an external dual band whip.

		Specification
<b>PART NO.</b>		6001118
<b>ELECTRICAL DATA</b>		
<b>Frequency Range</b>	Elements 1 & 2	2300-2500 & 4900-6000MHz
<b>Operational Bands</b>	Elements 1, 2 & 3	Wi-Fi 2.4/5.0GHz
<b>Peak gain: Isotropic</b>		4dBi (2.4GHz)   6dBi (5.8GHz)
<b>Isolation with 4m/13'</b>		>19dB
<b>Typical Efficiency w/o Cable Loss</b>		> 50%
<b>Correlation Co-efficient</b>		< 0.2
<b>Polarisation</b>		Vertical
<b>Pattern</b>		Omni-directional
<b>Impedance</b>		50Ω
<b>Max Input Power</b>		25W
<b>MECHANICAL DATA</b>		
<b>Dimensions</b>	Total Height (excluding whip)	50mm (2.2")
	Length	170mm (6.77")
	Width	60mm (2.4")
<b>Operating Temp</b>		-40° / +80°C (-40° / 176°F)
<b>Material</b>		ASA, EPDM, Aluminium Alloy
<b>Colour</b>		Black
<b>Weight</b>		913g
<b>Ingress Protection</b>		IP 66

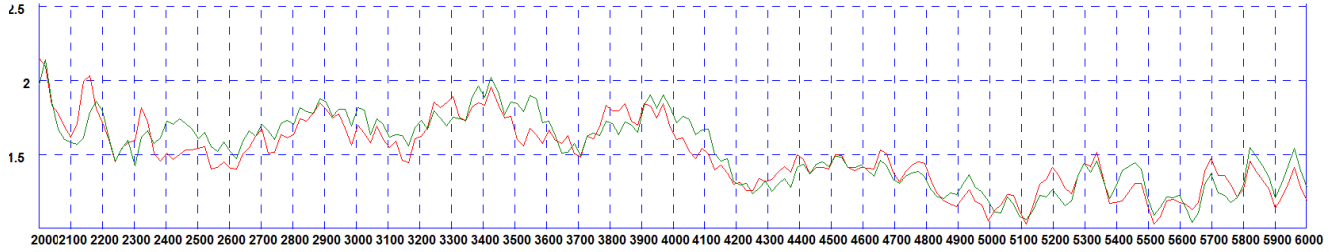
MOUNTING DATA		Specification
Mounting Type		Bolt Mount
Mounting Hole		19mm (3/4")
CABLE DATA		
Wi-Fi Cables	Cable	CS32
	Length	4m (13ft)
	Termination	RP-SMA

TECHNICAL DRAWING



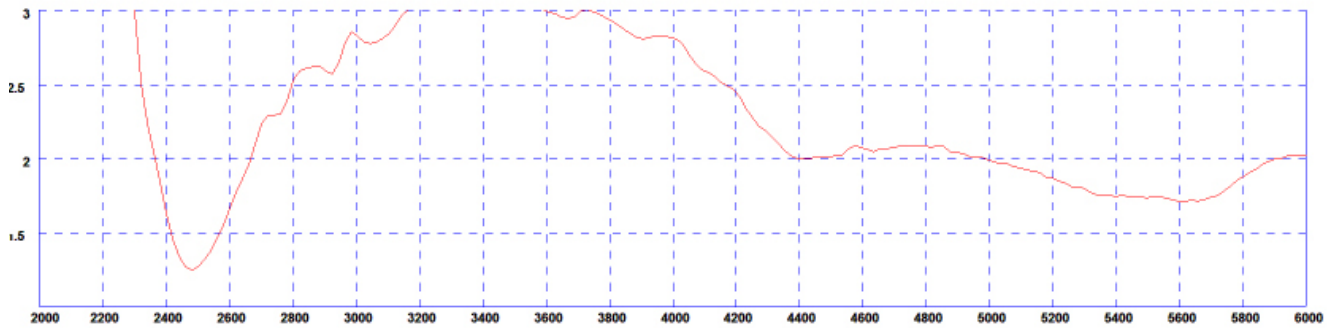
VSWR

Typical VSWR - WiFi Elements 1&2\*



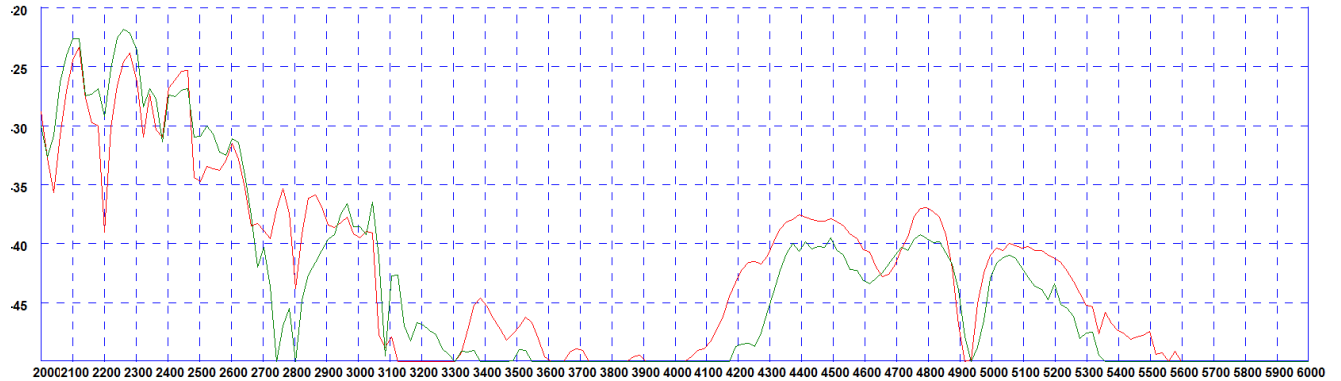
\*VSWR measured with no whip and 5m (16') of CS32 cable

Typical VSWR - Whip - WiFi Element 3



\* VSWR measured in free space

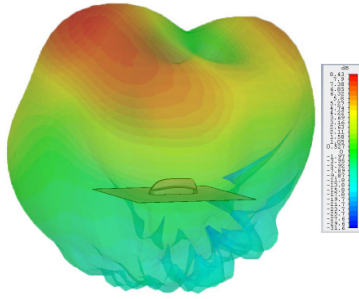
Typical Isolation - WiFi Elements 1&2



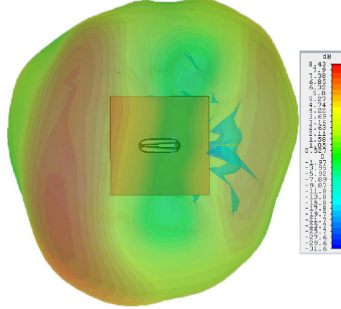
ELECTRICAL DATA

Typical 3D Radiation Patterns - WiFi Elements 1&2

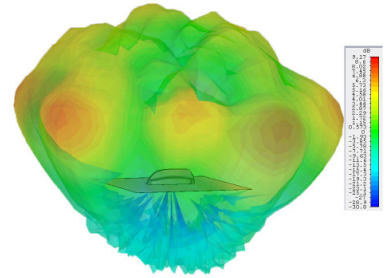
3D Gain Plot Side (2.4GHz)



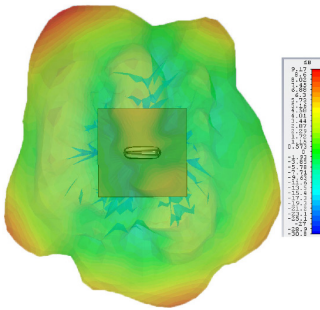
3D Gain Plot Top (2.4GHz)



3D Gain Plot Side (5.4GHz)

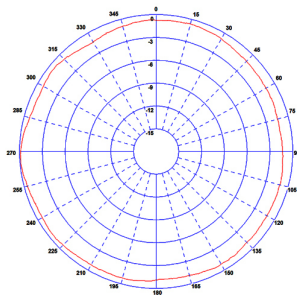


3D Gain Plot Top (5.4GHz)

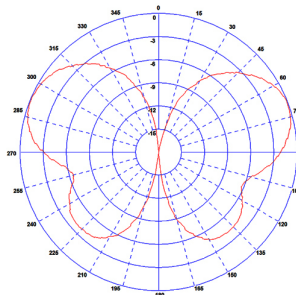


Typical Radiation Patterns - Whip

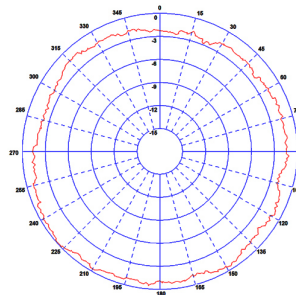
Typical H Plane Plot (2450MHz)



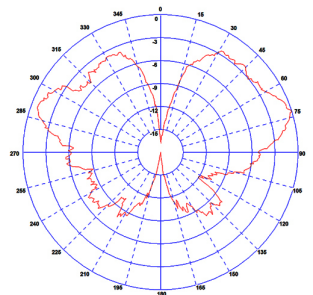
Typical E Plane Plot (2450MHz)



Typical H Plane Plot (5400MHz)



Typical E Plane Plot (5400MHz)



About Sierra Wireless

Sierra Wireless is building the Internet of Things with intelligent wireless solutions that empower organizations to innovate in the connected world. We offer the industry's most comprehensive portfolio of 2G, 3G, and 4G embedded modules and gateways, seamlessly integrated with our secure cloud and connectivity services. OEMs and enterprises worldwide trust our innovative solutions to get their connected products and services to market faster.

For more information, visit [www.sierrawireless.com](http://www.sierrawireless.com).