









2.4GHz PIR Sensor instruction manual

Model No.: PIR1-RF

Contents

<u>Feature</u>	2
<u>Parameter</u>	2
<u>Description</u>	3
<u>Battery Installation</u>	3
<u>Link/Unlink</u>	4
<u>Function Description</u>	5
<u>Function setting method</u>	6
<u>Compatibility remote</u>	7
<u>Installation Direction</u>	8
<u>Attention</u>	9

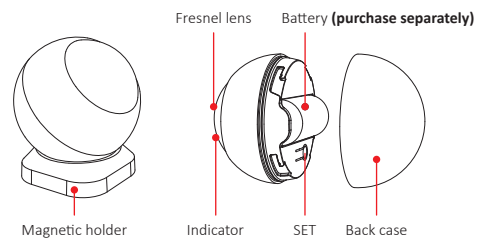
1. Feature

-  Motion detection support smart scene automation and intrusion warning
-  Support to link with one or multi 2.4G lighting series
-  Support to set "hold time" function
-  Built-in high sensitive lighting sensor
-  Strong magnetic mounting method
-  Flexible 360°angle

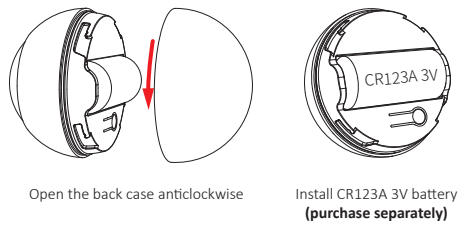
2. Parameter

Model No.: PIR1-RF
Battery: CR123A 3V
Standby Power Consumption: 12 μ A
Detection Angle: 120°
Detection Distance: 7m
RF: 2.4GHz
Control Distance: 30m
Working Temperature: -10~40°C

3. Description



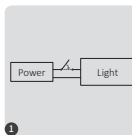
4. Battery Installation



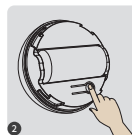
5. Link/Unlink

PIR sensor need to be paired with lights, countless lights can be worked with it.

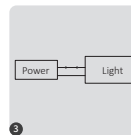
1). Linking Code Instructions



Power off 10 seconds and power on again.



Short press "SET" button 3 times within 3 seconds.

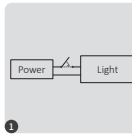


Lights blink 3 times slowly means linking is done successfully.

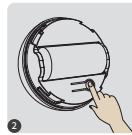


Linking failed if light is not blinking slowly, Please follow above steps again.
(Note: Light that have linked can't link again)

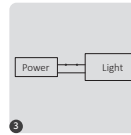
2). Unlinking Code Instructions



Power off 10 seconds and power on again.



Short press "SET" button 5 times within 3 seconds.



Lights blink 10 times quickly means unlinking is done successfully.



Unlinking failed if light is not blinking quickly, Please follow above steps again.
(Note: Light haven't linked that don't need to unlink)

6. Function Description

***Brightness feature while motion detected:**

When the sensor detects motion, the light automatically turns on (brightness can be set to "previous brightness" or "100% brightness").

***Light Sense:**

ON: PIR sensor only works in gloomy area

OFF: PIR sensor works in any place

***Night Light:**

ON: bright environment to gloomy environment, light up automatically (brightness is 1%), gloomy environment to bright environment, light off automatically

OFF: Light is off while motion is not detected in any environment

***Hold time while motion detected**

(30S / 2 minutes / 10 minutes / 60 minutes):

For example: it will turn on light if motion is detected and activated timer function (30 seconds), the light will be off if new motion is not detected within 30 seconds.

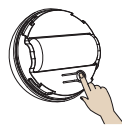
7. Function setting method

Factory default: Brightness feature while motion detected: 100%

Hold time while motion detected: 30 seconds

Light sence: ON

Night Light: ON



Maximum distance 30m



- 1 Long press "SET" seconds, Indicator flashes quickly to start setting up. (Attention: exited without operation within 10 seconds)
- 2 Short press the keys, details as following (Refer to the table below for key functions)

Set up function	Short press 1 time on remote
Brightness feature while motion detected	Master On: 100% Master Off: See Note*
Light Sence (ON/OFF)	On Zone-1 Off
Night Light (ON/OFF)	On Zone-2 Off
Hold Time	30S Zone-3 10Minutes Zone-4 2Minutes 60Minutes

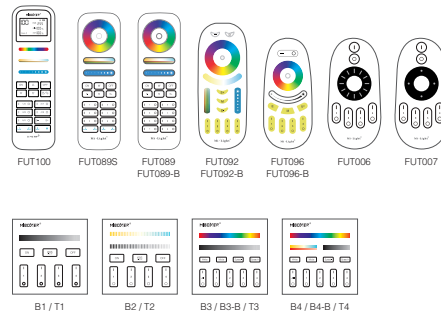
Note*

1. If the night light is in the off state, set the light to "previous brightness" when there is motion detected.
2. If the night light is in the on state, set the light to "20% brightness" when there is motion detected.

Reset to factory settings:

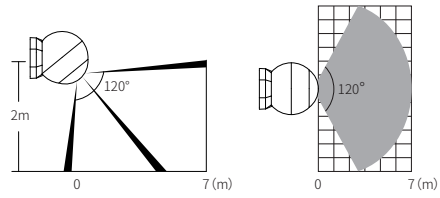
Press and hold the "SET" button for 10 seconds until the indicator light flashes slowly 3 times to confirm the reset.

8. Compatible with these 2.4G RF remote controls (Purchased separately)



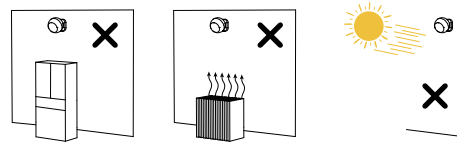
9. Installation Direction

- 1). Location: install it in the area where people usually cross over and distance must be 2m over the ground. As shown below.



Useful detecting area (vertical view) Useful detecting area (overhead view)

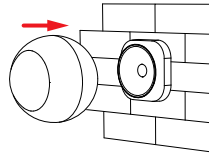
- 2). Stay away from air conditioner, fridge, oven..etc which is easy to affect temperature, don't display it under sunshine directly.



3). Remove sticker on the back base, fix base holder on suitable position.



Remove sticker



Put it on magnetic base

10. Attention

- 1). Remove battery if don't often use it, save it in dry and static free condition.
- 2). Don't use it near metal or strong hertz area, it will affect communication distace.



Made in China