



PowerCube | Monitor |



“ Monitor your electricity consumption ”



Real-time cost

The PowerCube | Monitor | shows energy consumption readings in monetary value to make it easy to interpret.



Current consumption

Current consumption is displayed like a car speedometer to make it easy to read at a glance.



On/Off switch

The display doubles as an on/off switch, so you can start saving energy with just one press.



Detailed consumption

Consumption of up to 1/1000th of a cent is measured and displayed, so you get direct feedback even for low-consuming devices.

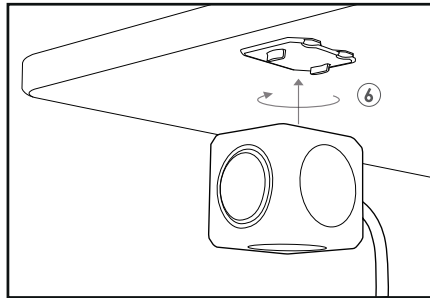
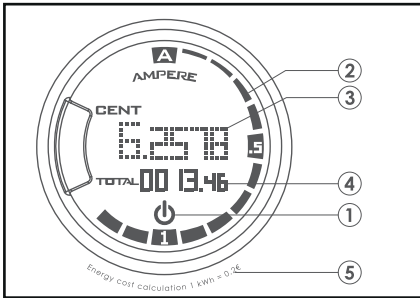
By pressing the display twice, you can reset the counter to measure detailed consumption for a period of your choice.



Total consumption

Total consumption is also shown, and you can reset its counter by press and holding the display.





- ① Clickable LCD-display
- ② Electric current, up to 1.3A
- ③ Subtotal energy consumption
- ④ Total energy consumption
- ⑤ Approximate cost per kWh for your region*
- ⑥ Twist to lock

PowerCube Extended | Monitor

The PowerCube | Monitor | helps you to monitor your energy consumption.

- EN** 1. Press the display to switch all sockets on or off. When off, the on/off symbol flickers. 2. The total electric current consumed by all plugged-in devices is shown on the speedometer. This meter measures up to 1.3A as the majority of devices will use less than this. This allows for a detailed readout of low-consuming devices like e.g. USB chargers. 3. Press the display 2x to reset the subtotal. As the subtotal is very precise (up to 4 digits behind the comma) you will also be able to see how much low-consuming devices consume. 4. Press the display 3x to reset the total. 5. Approximate cost per kWh for your region.* 6. Use the adhesive tape on the mounting system to fix it onto any flat surface. To remove, pull the tabs. Twist and lock.
* Your actual cost may differ from the one printed on the product.
- ES** 1. Presione la pantalla para prender o apagar todos los enchufes (tomacorrientes). El símbolo de prendido/apagado parpadea al apagar el aparato. 2. El total de la corriente de electricidad consumida por todos los dispositivos eléctricos conectados se muestra en el metro. Este metro mide hasta 1.3A (amperios), normalmente la mayoría de los aparatos usan una cantidad menor. Esto permite dar resultados más detallados para los aparatos de bajo consumo como los cargadores de USB. 3. Presione la pantalla 2 veces para reiniciar el subtotal. El subtotal es muy preciso (hasta los milésimos). También podrá verse la cantidad consumida por aparatos de bajo consumo. 4. Presione el monitor 3 veces para reiniciar el total. 5. Costo aproximado en kWh por su región.* 6. Utilice la cinta adhesiva que viene con el sistema montador para fijar el aparato a cualquier superficie plana. Para eliminar el montador, jale las pestañas plásticas. Girarse hasta que esté fijo.
* El costo verdadero puede ser diferente de lo que indica el producto.
- FR** 1. Appuyez sur l'écran pour allumer/éteindre toutes les prises. Quand elles sont allumées, le signe ON/OFF clignote. 2. La totalité d'énergie consommé par tous les appareils branchés est affiché sur l'indicateur de vitesse. Ce chiffre mesure jusqu'à 1.3A comme la majorité des appareils consomment moins que cela. Permettant de visualiser un affichage détaillé même des appareils qui ont une consommation basse, comme par exemple les chargeurs USB. 3. Appuyez 2x sur l'écran pour réinitialiser le sous-total. Étant donné que le sous-total est très précis (jusqu'à 4 chiffres après la virgule) vous serez capable de suivre la consommation des appareils ayant une consommation basse. 4. Appuyez 3x sur l'écran pour réinitialiser le total. 5. Cout estimé par kWh pour votre région.* 6. Utilisez les bandes adhésives sur le système de montage pour le fixer sur n'importe quelle surface plate. Pour l'enlever, tirez les onglets. Tournez and fixez.
* Votre cout actuel peut différer de celui imprimé sur le produit.
- PT** 1. Pressione a tela para ligar e desligar os soquetes. Quando desligado, o símbolo on/ off pisca. 2. A corrente elétrica total consumida por todos os dispositivos conectados é mostrado no velocímetro. Este medidor mede até 1.3A, visto que a maioria dos dispositivos irá utilizar uma quantidade menor. Isto permite uma leitura detalhada dos dispositivos de baixo consumo, como por exemplo carregadores USB. 3. Pressione a tela 2x para reiniciar o subtotal. Como o subtotal é muito preciso (até 4 dígitos depois da vírgula), você também será capaz de observar como dispositivos de baixo consumo trabalham. 4. Pressione a tela 3x para reiniciar o total. 5. Custo aproximado por kWh para a sua região.* 6. Use a fita adesiva com o sistema de montagem para fixá-lo em qualquer superfície plana. Para remover, puxe as fitas. Gire e trave.
* O seu custo real pode ser diferente daquele impresso no produto.
- KR** 1. 디스플레이를 눌러서 소켓을 켜기/끄기. 끌 때에 온-오프 표시가 깜박입니다. 2. 플러그를 접속한 모든 디바이스가 소비한 총 전류는 속도계에서 표시될 수 있습니다. 속도계는 최대 1.3A만 측정할 수 있고, 그 원인은 다수의 디바이스가 그보다 더 적은 전류를 사용하기 때문입니다. 저전력인 디바이스(예: USB 충전기)에 대해 상세한 해독도 가능합니다. 3. 디스플레이를 두 번 눌러서 소켓을 재설정합니다. 소켓이 아주 정확하게(콤마 뒤에 4위 소수까지) 저전력인 디바이스가 얼마나 전력을 소비하는 것을 당신은 잘 볼 수 있게 합니다. 4. 디스플레이를 세 번 눌러서 총수를 재설정합니다. 5. 당신 지방에 kWh당 정확한 가격입니다.* 6. 마운트 시스템에 있는 접착 테이프를 사용하여 평평한 면에서 설치할 수 있습니다. 테이프를 끌어서 제거될 수 있습니다. 비틀고 잠금.* 실제 소비는 제품 상에 표시된 것과 다를 수 있습니다.
- AR** 1. اضغط على الشاشة لتبديل إيقاف جميع مقاييس أو تشغيلها. عندما إيقاف، سترمش أضواء تشغيل / إيقاف. 2. يعرض استهلاك التيار الكهربائي الإجمالي من جميع الأجهزة الموصلة فيه في عداد السرعة. بلغت هذا التدايير الى 1.3A بما أن استخدم معظم الأجهزة أقل منها. ويسمح هذا للأجهزة المستهلكة المنخفضة مثل أجهزة الشحن USB بقراءة استهلاكها التفصيلة. 3. اضغط على الشاشة مرتين لإعادة المبلغ الإجمالي. لأن المبلغ تصل إلى 4 أرقام وراء الفاصلة ستستطيع ان ترى كم تستهلك الأجهزة المستهلكة المنخفضة. 4. اضغط على الشاشة مرتين لإعادة المبلغ في مجموعتها. 5. يكلف لكل كيلوواط ساعة للمنطقتم تقريبا.* 6. استخدام الشريط اللاصق على نظام تركيب لثبتها على أي سطح مستو. لإزالة، وسحب المصق. الاتعاطاف والقفل.
* قد سيختلف تكلفتكم الفعلية من التكلفة المطبوعة على المنتج.

WARNINGS

Failure to comply with the following may result in damage or injury. All warranties contained herein are null and void if used in violation of any of the following conditions:

- Do not use outdoors at any time
- Do not use in damp or wet areas
- Keep children away
- Do not use in receptacles that are not properly grounded
- Do not "daisy-chain"
- Do not plug into an extension cord
- Do not use with aquariums, medical device(s) and life support device(s)
- Do not attempt to repair or perform internal examination
- Do not use in conjunction with a UPS (uninterruptible power supply)
- Do not use with three-to-two-prong adapters
- Do not plug heater(s) in
- Do not use with generators or sump pumps
- Do not use with cars, motorcycles or golf-cart battery chargers
- Do not exceed electrical ratings

IMPORTANT NOTES

Alloccacoc reserves the right to review the damaged PowerCube, the damaged equipment, and the site where the damage occurred. All costs of shipping Alloccacoc PowerCube and the damaged equipment to Alloccacoc for inspection shall be borne solely by the purchaser. Alloccacoc reserves the right to negotiate the cost of repairs. If Alloccacoc determines in its sole discretion, that is impractical to ship the damaged equipment to Alloccacoc, Alloccacoc may designate, in its sole discretion, an equipment, repair facility to inspect and estimate the cost of repair such equipment. The cost, if any, of shipping the equipment to and from such repair facility and of such estimate shall be borne solely by the purchaser. Damaged equipment must remain available for inspection until the claim is finalized. Whenever claims are settled, Alloccacoc reserves the right to be subrogated under any existing insurance policies the claimant may have.